

KENWOOD

PARTS LIST

CD RECEIVER

KDC-452U

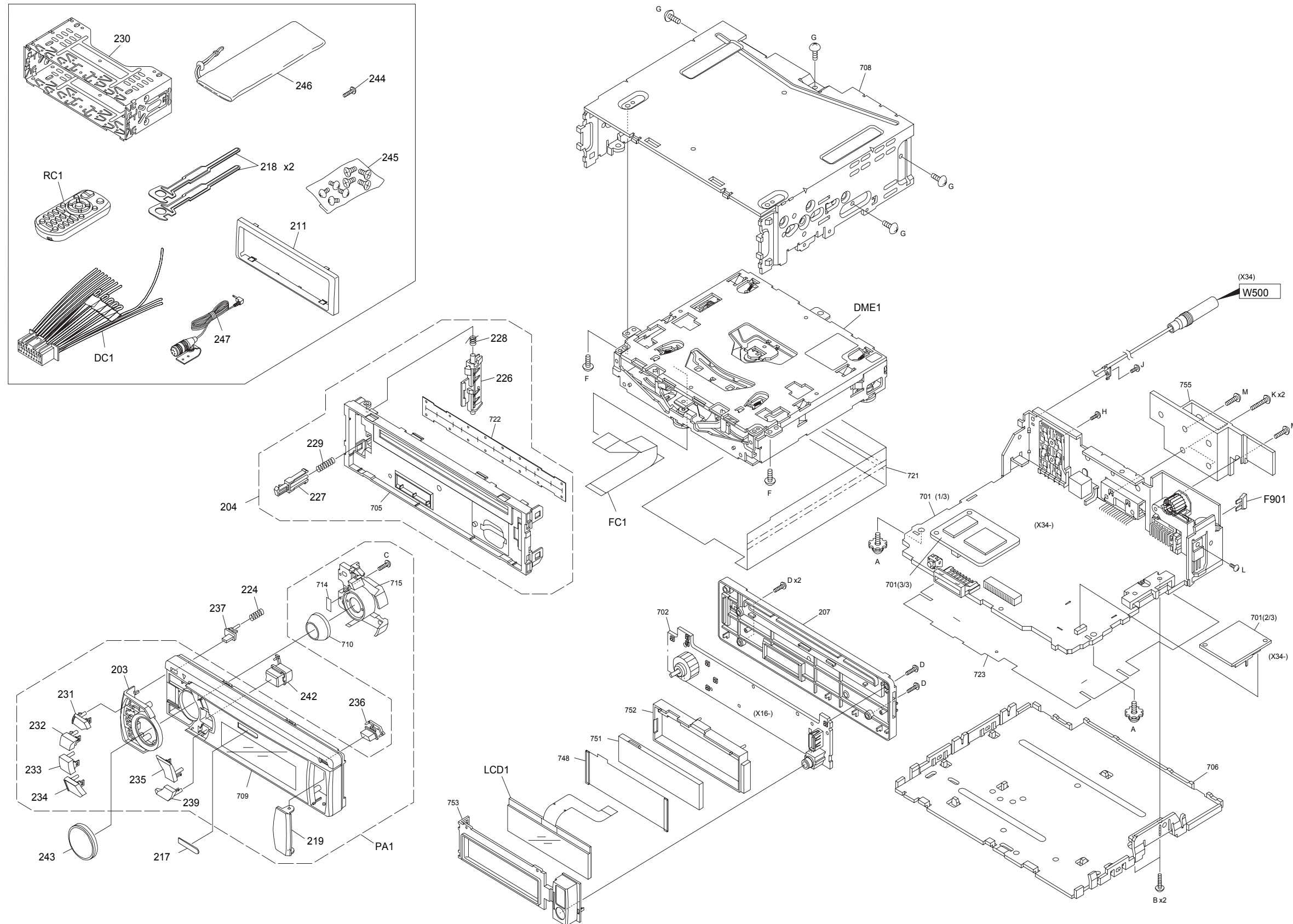
KDC-BT852HD

KDC-X496

KDC-X896

EXPLODED VIEW (UNIT)

Block No.200



Parts with the exploded numbers larger than 700 are not supplied.

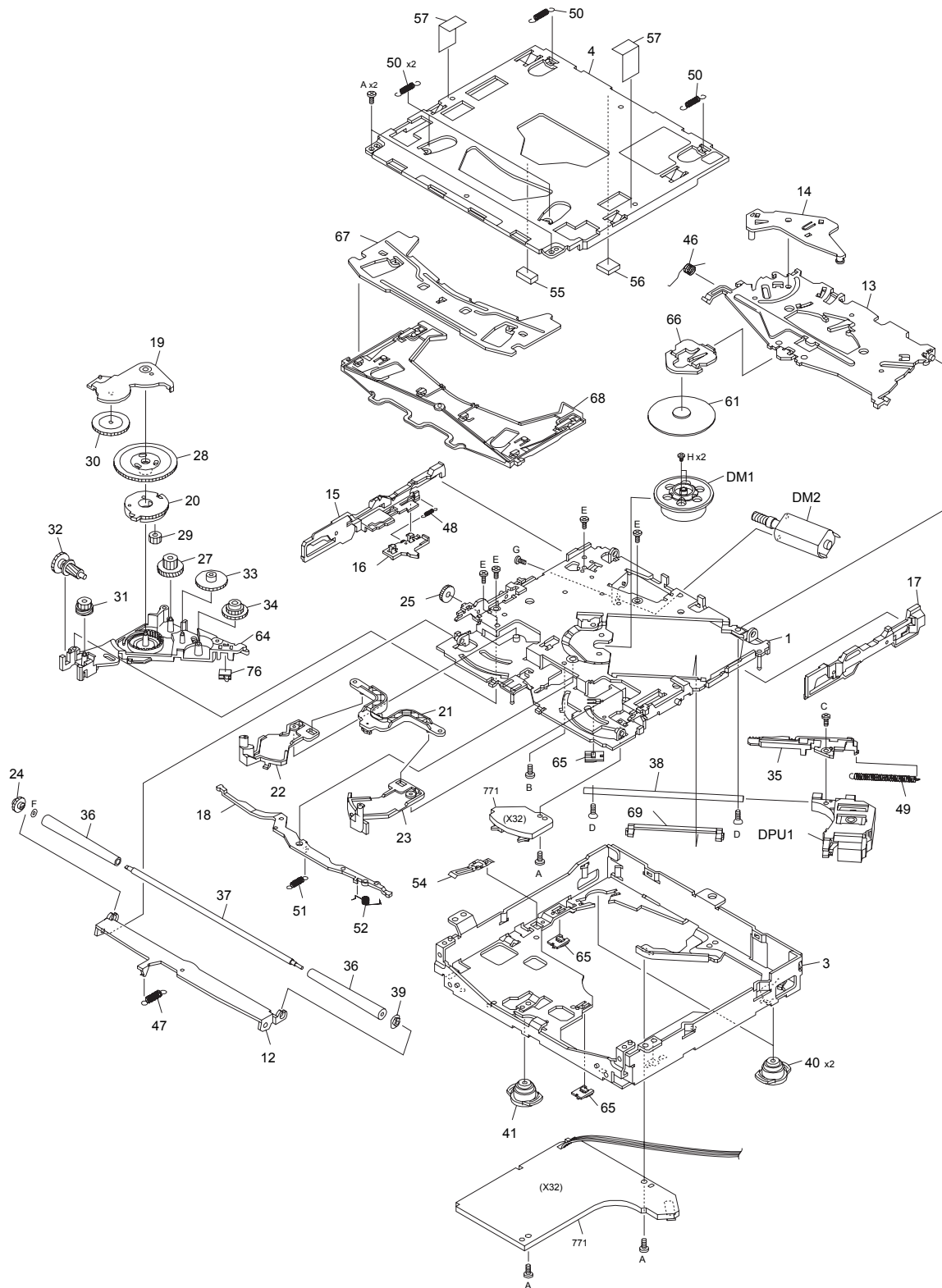
| MODEL | MARK | MODEL | MARK | MODEL | MARK | MODEL | MARK |
|----------|------|-------------|------|----------|------|----------|------|
| KDC-452U | K2 | KDC-BT852HD | K0 | KDC-X496 | K4 | KDC-X896 | K1 |

| Safe | Symbol No. | Parts No. | Parts Name | Description | QTY | Local |
|---|------------|--------------|----------------------------------|-------------|-----|-------|
| EXPLODED VIEW (UNIT) <200> | | | | | | |
| △ | DC1 | E30-6939-05 | DC CORD | | 1 | |
| | DME1 | X92-6370-04 | MECHANISM ASSY (DXM-9B24W) | | 1 | |
| △ | F901 | F52-0023-05 | FUSE | 32V 10A | 1 | |
| | FC1 | E39-1077-05 | FLAT CABLE | 30PIN 1MM | 1 | |
| | LCD1 | B38-1229-05 | LCD | 107x25DOTS | 1 | |
| | PA1 | A64-5338-02 | PANEL ASSY | | 1 | K2 |
| | PA1 | A64-5336-02 | PANEL ASSY | | 1 | K0 |
| | PA1 | A64-5366-02 | PANEL ASSY | | 1 | K4 |
| | PA1 | A64-5337-02 | PANEL ASSY | | 1 | K1 |
| | RC1 | A70-2104-05 | REMOTE CONTROLLER RC-405 ASSY | | 1 | |
| | A | N09-6758-05 | TAPTITE SCREW | | 2 | |
| | B | N35-2610-48 | BINDING HEAD | M2.6x10 | 2 | |
| | | | MACHINE SCREW | | | |
| | C | N80-2006-48 | PAN HEAD TAPTITE | 2x6 | 1 | |
| | | | SCREW | | | |
| | D | N80-2008-43 | PAN HEAD TAPTITE | 2x8 | 4 | |
| | | | SCREW | | | |
| | F | N86-2604-43 | BINDING HEAD TAPTITE | 2.6x4 | 2 | |
| | | | SCREW | | | |
| | G | N86-2606-48 | BINDING HEAD TAPTITE | 2.6x6 | 4 | |
| | | | SCREW | | | |
| | H | N80-3008-48 | PAN HEAD TAPTITE | 3x8 | 1 | |
| | | | SCREW | | | |
| | J | N83-3005-48 | PAN HEAD TAPTITE | 3x5 B | 1 | |
| | | | SCREW | | | |
| | K | N84-3014-48 | PAN HEAD TAPTITE | 3x14 | 2 | |
| | | | SCREW | | | |
| | L | N86-2606-48 | BINDING HEAD TAPTITE | 2.6x6 | 1 | |
| | | | SCREW | | | |
| | M | N89-3010-48 | BINDING HEAD TAPTITE | | 2 | |
| | | | SCREW | | | |
| | 203 | A21-6800-02 | DRESSING PANEL | | 1 | |
| | 204 | A22-3297-13 | SUB PANEL ASSY | | 1 | |
| | 207 | A46-1917-01 | REAR COVER | | 1 | |
| | 211 | B07-3361-02 | ESCUTCHEON (POLISH) | | 1 | |
| | 217 | B43-1545-14 | BADGE | | 1 | |
| | 218 | D10-7139-04 | LEVER | | 2 | |
| | 219 | F07-2237-03 | COVER (USB) | | 1 | |
| | 224 | G01-3244-04 | COMPRESSION SPRING (REL) | | 1 | |
| | 226 | GE34045-001A | LOCK LEVER | | 1 | |
| | 227 | GE34046-001A | RELEASE LEVER | | 1 | |
| | 228 | GE40504-001A | SPRING | | 1 | |
| | 229 | GE40505-001A | SPRING | | 1 | |
| | 230 | J22-2049-03 | MOUNTING HARDWARE ASSY | | 1 | |
| | 231 | K24-5084-13 | PUSH KNOB (SRC) | | 1 | |
| | 232 | K24-5085-13 | PUSH KNOB (SEARCH) | | 1 | |
| | 233 | K24-5086-13 | PUSH KNOB (RETURN) | | 1 | |
| | 234 | K24-5087-13 | PUSH KNOB (DISP) | | 1 | |
| | 235 | K24-5088-13 | PUSH KNOB (PRESET) | | 1 | |
| | 236 | K24-5090-03 | PUSH KNOB (EJECT) | | 1 | |
| | 237 | K24-5091-04 | PUSH KNOB (RELEASE) | | 1 | |
| | 239 | K24-5157-03 | PUSH KNOB (SEARCH MODE) | | 1 | K2,K4 |
| | 239 | K24-5156-03 | PUSH KNOB (PANDORA) | | 1 | K0,K1 |
| | 242 | K28-0443-13 | KNOB ASSY (iPod) | | 1 | K2,K4 |
| | 242 | K28-0439-13 | KNOB ASSY (BT) | 2WAY | 1 | K0,K1 |
| | 243 | K28-0494-04 | KNOB ASSY (VOL) | | 1 | |
| | 244 | N80-2008-48 | PAN HEAD TAPTITE | 2x8 | 1 | |
| | | | SCREW | | | |
| | 245 | N99-1757-15 | SCREW SET | | 1 | |
| | 246 | W01-1710-05 | CARRYING CASE | | 1 | K2,K0 |
| | 246 | W01-1664-05 | CARRYING CASE (EXCELON) | | 1 | K4,K1 |
| | 247 | W01-1768-15 | MICROPHONE (42dB) | | 1 | K0,K1 |
| | - | B59-2127-00 | SUB-INSTRUCTION MANUAL | ENG FRE SPA | 1 | |
| | - | H54-5176-03 | ITEM CARTON CASE | | 1 | K2 |
| | - | H54-5174-03 | ITEM CARTON CASE | | 1 | K0 |
| | - | H54-5178-03 | ITEM CARTON CASE | | 1 | K4 |
| | - | H54-5175-03 | ITEM CARTON CASE | | 1 | K1 |

EXPLODED VIEW (CD MECHANISM)

Block No.130

DXM-9B24W



Parts with the exploded numbers larger than 700 are not supplied.

No.WA017

created date:2012-02-27

| MODEL | MARK | MODEL | MARK | MODEL | MARK | MODEL | MARK |
|----------|------|-------------|------|----------|------|----------|------|
| KDC-452U | K2 | KDC-BT852HD | K0 | KDC-X496 | K4 | KDC-X896 | K1 |

| Safe | Symbol No. | Parts No. | Parts Name | Description | QTY | Local |
|------|------------|-----------|------------|-------------|-----|-------|
|------|------------|-----------|------------|-------------|-----|-------|

EXPLODED VIEW (CD MECHANISM) <130>

| | | | | | | |
|--|------|-------------|--------------------------------|-------------|---|--|
| | DM1 | X94-2090-00 | SPINDLE MOTOR ASSY | | 1 | |
| | DM2 | X94-2100-00 | FEED MOTOR ASSY (LOAD/SLED) | | 1 | |
| | DPU1 | X93-2280-00 | OPTICAL PICKUP ASSY | | 1 | |
| | A | N09-6108-15 | TAPTITE SCREW | M2x3.5TYPE3 | 5 | |
| | B | N09-6426-15 | LOAD ARM SCREW | | 1 | |
| | C | N09-6735-05 | PICK SCREW | | 1 | |
| | D | N09-6737-15 | SHAFT SCREW | | 2 | |
| | E | N09-6738-15 | GEAR SCREW | | 4 | |
| | F | N19-2335-14 | ROLLER WASHER | | 1 | |
| | G | N35-2003-48 | BINDING HEAD | M2x3 | 1 | |
| | | | MACHINE SCREW | | | |
| | H | N39-1720-48 | PAN HEAD MACHINE SCREW | M1.7x2.0 | 2 | |
| | 1 | A10-5450-73 | MD CHASSIS ASSY | | 1 | |
| | 3 | A10-5574-01 | OUTER CHASSIS T2 | | 1 | |
| | 4 | A10-5453-32 | TOP CHASSIS | | 1 | |
| | 12 | D10-4993-62 | ROLLER LEVER | | 1 | |
| | 13 | D10-4991-22 | CLAMP ARM | | 1 | |
| | 14 | D10-4992-23 | TRIGGER ARM | | 1 | |
| | 15 | D10-4994-02 | SLIDER L | | 1 | |
| | 16 | D10-4995-03 | TRIGGER SLIDER | | 1 | |
| | 17 | D10-4996-02 | SLIDER R | | 1 | |
| | 18 | D10-4997-03 | JOINT LEVER | | 1 | |
| | 19 | D10-4998-03 | LOADING ARM | | 1 | |
| | 20 | D10-4999-03 | CARRIER ARM | | 1 | |
| | 21 | D10-7001-03 | JOINT ARM | | 1 | |
| | 22 | D10-7002-03 | DISC ARM L | | 1 | |
| | 23 | D10-7003-03 | DISC ARM R | | 1 | |
| | 24 | D13-2445-04 | ROLLER GEAR | | 1 | |
| | 25 | D13-2446-04 | LOAD GEAR 2 | | 1 | |
| | 27 | D13-2448-04 | HELICAL GEAR 1 | | 1 | |
| | 28 | D13-2449-04 | SUN GEAR | | 1 | |
| | 29 | D13-2450-04 | PLANET GEAR | | 1 | |
| | 30 | D13-2451-04 | LOAD GEAR 1 | | 1 | |
| | 31 | D13-2452-04 | WORM 2 | | 1 | |
| | 32 | D13-2453-04 | HELICAL GEAR 2 | | 1 | |
| | 33 | D13-2454-04 | PICK GEAR 1 | | 1 | |
| | 34 | D13-2455-04 | PICK GEAR 2 | | 1 | |
| | 35 | D13-2456-03 | RACK GEAR | | 1 | |
| | 36 | D14-1028-04 | ROLLER | | 2 | |
| | 37 | D21-2507-04 | ROLLER SHAFT | | 1 | |
| | 38 | D21-2508-04 | PICK UP SHAFT | | 1 | |
| | 39 | D23-0963-04 | ROLLER RETAINER | | 1 | |
| | 40 | D39-0277-15 | REAR DAMPER | | 2 | |
| | 41 | D39-0278-15 | FRONT DAMPER | | 1 | |
| | 46 | G01-4682-34 | CLAMP SPRING | | 1 | |
| | 47 | G01-4756-04 | ROLLER SPRING | | 1 | |
| | 48 | G01-4684-04 | TRIGGER SPRING | | 1 | |
| | 49 | G01-4685-04 | PICK UP SPRING | | 1 | |
| | 50 | G01-4686-14 | FLOATING SP F | | 4 | |
| | 51 | G01-4688-14 | JOINT ARM SPRING | | 1 | |
| | 52 | G01-4692-24 | LOAD SPRING | | 1 | |
| | 54 | G02-1588-04 | HOLE SPRING V | | 1 | |
| | 55 | G13-1297-04 | CLAMPER CUSSION | | 1 | |
| | 56 | G13-1299-14 | STROKE CUSHION | | 1 | |
| | 57 | G16-1715-04 | OUTER SHEET | | 2 | |
| | 61 | J11-0675-03 | CLAMPER | | 1 | |
| | 64 | J19-7210-21 | GEAR HOLDER | | 1 | |
| | 65 | J19-7225-04 | WIRE HOLDER | | 3 | |
| | 66 | J22-0706-03 | CLAMPER HOLDER | | 1 | |
| | 67 | J22-0707-12 | GUIDE BKT | | 1 | |
| | 68 | J90-1166-11 | DISC GUIDE | | 1 | |
| | 69 | J90-1168-03 | SUB RAIL HOLDER | | 1 | |
| | 76 | S68-0921-05 | PUSH SWITCH | | 1 | |

ELECTRIC UNIT (X34-7160-1x) <X34>

| | | | | | | |
|--|-------|---------------|-------------------------------|--|---|-------|
| | IC1 | BD49131-V4 | ANALOGUE IC | | 1 | |
| | IC21 | BU33TD3WG | ANALOGUE IC | | 1 | |
| | IC51 | MP2560DN-C413 | ANALOGUE IC | | 1 | |
| | IC61 | AN33013UA-VB | ANALOGUE IC | | 1 | |
| | IC201 | W10-0735-08 | INTEGRATED CIRCUIT(MCU) | | 1 | K2,K4 |
| | IC201 | W10-0734-08 | INTEGRATED CIRCUIT(MCU) | | 1 | K0,K1 |
| | IC202 | XC6119N28AN-G | MOS-IC | | 1 | |
| | IC203 | BR24T256FVT-W | ROM IC | | 1 | |
| | IC261 | MF1341S2162 | MICROPROCESSOR IC | | 1 | |
| | IC301 | TC7SET125FU-F | MOS-IC | | 1 | |
| | IC302 | BH31MA3WHFV | ANALOGUE IC | | 1 | |
| | IC401 | TDA7720-X | IC | | 1 | |
| | IC500 | TDA7706 | INTEGRATED CIRCUIT(MOS-IC) | | 1 | |
| | IC570 | BD12KA5WFP | ANALOGUE IC | | 1 | |
| | IC580 | BA50BC0WFP | ANALOGUE IC | | 1 | |
| | IC600 | W10-0741-08 | MOS-IC | | 1 | |
| | IC661 | TC7SET08FU-F | MOS-IC | | 1 | |
| | IC662 | TC7SH17FU-F | MOS-IC | | 1 | |
| | IC801 | TB2931HQ | ANALOGUE IC | | 1 | |
| | IC901 | BA4560RFV | ANALOGUE IC | | 1 | K0,K1 |
| | IC902 | BD18KA5WFP | ANALOGUE IC | | 1 | K0,K1 |

| | | | | | | | |
|----------|------|-------------|------|----------|------|----------|------|
| MODEL | MARK | MODEL | MARK | MODEL | MARK | MODEL | MARK |
| KDC-452U | K2 | KDC-BT852HD | K0 | KDC-X496 | K4 | KDC-X896 | K1 |

| Safe | Symbol No. | Parts No. | Parts Name | Description | QTY | Local |
|------|------------|---------------|-----------------|------------------|-----|----------|
| | Q1 | KTA1046-P | TRANSISTOR | | 1 | |
| | Q2 | LSCR523UBFS8 | TRANSISTOR | | 1 | |
| | Q3 | LTC024EUBFS8 | TRANSISTOR | | 1 | |
| | Q4 | LTA024EUBFS8 | TRANSISTOR | | 1 | |
| | Q5 | LTC043ZUBFS8 | TRANSISTOR | | 1 | |
| | Q6 | LTA024EUBFS8 | TRANSISTOR | | 1 | |
| | Q7 | LTC043ZUBFS8 | TRANSISTOR | | 1 | |
| | Q8 | LTA024EUBFS8 | TRANSISTOR | | 1 | |
| | Q9 | LTC043ZUBFS8 | TRANSISTOR | | 1 | |
| | Q10 | LTA024EUBFS8 | TRANSISTOR | | 1 | |
| | Q51 | LTC043ZUBFS8 | TRANSISTOR | | 1 | |
| | Q52 | LTC043ZUBFS8 | TRANSISTOR | | 1 | |
| | Q61 | LTC043ZUBFS8 | TRANSISTOR | | 1 | |
| | Q91 | LTC043ZUBFS8 | TRANSISTOR | | 1 | K0,K4,K1 |
| | Q92 | 2SB1188(Q,R) | TRANSISTOR | | 1 | K0,K4,K1 |
| | Q93 | LSCR523UBFS8 | TRANSISTOR | | 1 | K0,K4,K1 |
| | Q94 | LSAR523UBFS8 | TRANSISTOR | | 1 | K0,K4,K1 |
| | Q95 | LSAR523UBFS8 | TRANSISTOR | | 1 | K0,K4,K1 |
| | Q96 | LSAR523UBFS8 | TRANSISTOR | | 1 | K0,K4,K1 |
| | Q101 | LSCR523UBFS8 | TRANSISTOR | | 1 | |
| | Q102 | LSCR523UBFS8 | TRANSISTOR | | 1 | |
| | Q103 | LSCR523UBFS8 | TRANSISTOR | | 1 | |
| | Q104 | LSCR523UBFS8 | TRANSISTOR | | 1 | |
| | Q105 | LTC044EUBFS8 | TRANSISTOR | | 1 | |
| | Q301 | DTA123JUA | DIGI TRANSISTOR | | 1 | |
| | Q701 | LTC043TUBFS8 | TRANSISTOR | | 1 | |
| | Q702 | LTC043TUBFS8 | TRANSISTOR | | 1 | |
| | Q703 | LTC043TUBFS8 | TRANSISTOR | | 1 | |
| | Q704 | LTC043TUBFS8 | TRANSISTOR | | 1 | |
| | Q705 | LTC043TUBFS8 | TRANSISTOR | | 1 | |
| | Q706 | LTC043TUBFS8 | TRANSISTOR | | 1 | |
| | Q707 | LTA014YUBFS8 | TRANSISTOR | | 1 | |
| | Q708 | LTA014YUBFS8 | TRANSISTOR | | 1 | |
| | D1 | S2V60-5009F46 | DIODE | | 1 | |
| | D2 | RKZ8.2KG(B2) | Z DIODE | | 1 | |
| | D3 | GS1J-LTP-X | DIODE | | 1 | |
| | D4 | MC2848-T111 | DIODE | | 1 | |
| | D51 | CMS14 | DIODE | | 1 | |
| | D52 | RKS801KF | DIODE | | 1 | |
| | D61 | CMS14 | DIODE | | 1 | |
| | D91 | RKZ5.1KG(B2) | Z DIODE | | 1 | K0,K4,K1 |
| | D92 | RKS801KF | DIODE | | 1 | K0,K4,K1 |
| | D101 | GS1J-LTP-X | DIODE | | 1 | |
| | D102 | GS1J-LTP-X | DIODE | | 1 | |
| | D103 | GS1J-LTP-X | DIODE | | 1 | |
| | D104 | GS1J-LTP-X | DIODE | | 1 | |
| | D105 | MC2846-T111 | DIODE | | 1 | |
| | D106 | UDZW6.8(B) | Z DIODE | | 1 | |
| | D107 | UDZW6.8(B) | Z DIODE | | 1 | |
| | D108 | UDZW6.8(B) | Z DIODE | | 1 | |
| | D201 | RB521S-30 | DIODE | | 1 | |
| | D202 | RKZ5.1KG(B2) | Z DIODE | | 1 | |
| | D301 | MC2850-T111 | DIODE | | 1 | |
| | D302 | RKZ6.8KG(B2) | Z DIODE | | 1 | |
| | D303 | RKZ6.8KG(B2) | Z DIODE | | 1 | |
| | D304 | RKZ6.8KG(B2) | Z DIODE | | 1 | |
| | D305 | VR105C3R3BAA | VARISTOR | | 1 | |
| | D306 | VR105C3R3BAA | VARISTOR | | 1 | |
| | D307 | HZM6.8ZMWA-E | Z DIODE | | 1 | |
| | D308 | MC2850-T111 | DIODE | | 1 | |
| | D401 | MC2846-T111 | DIODE | | 1 | |
| | D500 | IMS A-6802-E | SURGE ABSORBER | | 1 | |
| | D501 | KP2311ETR-G | DIODE | | 1 | |
| | D502 | KP2311ETR-G | DIODE | | 1 | |
| | D555 | MC2850-T111 | DIODE | | 1 | |
| | D651 | RKZ6.8KG(B2) | Z DIODE | | 1 | |
| | D652 | RKZ6.8KG(B2) | Z DIODE | | 1 | |
| | D653 | RKZ6.2KG(B2) | Z DIODE | | 1 | |
| | D661 | RKZ6.2KG(B2) | Z DIODE | | 1 | |
| | D662 | RKZ6.2KG(B2) | Z DIODE | | 1 | |
| | D663 | RKZ6.2KG(B2) | Z DIODE | | 1 | |
| | D701 | MC2846-T111 | DIODE | | 1 | |
| | D702 | MC2846-T111 | DIODE | | 1 | |
| | D801 | MC2846-T111 | DIODE | | 1 | |
| | D921 | RKZ4.7KG(B2) | Z DIODE | | 1 | K0,K1 |
| | D922 | RKZ4.7KG(B2) | Z DIODE | | 1 | K0,K1 |
| | C1 | CD04AZ1C332M2 | ELECTRO | 3300UF 16WV | 1 | |
| | C4 | CK73GB1C104K | CHIP C | 16V 0.10UF K | 1 | |
| | C6 | CK73GB1H104K | CHIP C | 50V 0.10UF K | 1 | |
| | C7 | CK73GB1H104K | CHIP C | 50V 0.10UF K | 1 | |
| | C8 | CD04BN1C221M | ELECTRO | 220UF 16WV | 1 | |
| | C9 | CD04AS0J101M | ELECTRO | 6.3v 100UF 6.3WV | 1 | |
| | C10 | CK73GB1C104K | CHIP C | 16V 0.10UF K | 1 | |
| | C11 | CK73GB1C104K | CHIP C | 16V 0.10UF K | 1 | |
| | C12 | CK73GB1C104K | CHIP C | 16V 0.10UF K | 1 | |
| | C13 | CK73GB1C104K | CHIP C | 16V 0.10UF K | 1 | |
| | C22 | CK73GB1A105K | CHIP C | 10V 1.0UF K | 1 | |
| | C23 | CK73GB1A105K | CHIP C | 10V 1.0UF K | 1 | |
| | C24 | CD04AS0J470M | ELECTRO | 47UF 6.3WV | 1 | |
| | C52 | CK73FB0J106K | CHIP C | 6.3V 10UF K | 1 | |
| | C53 | CC73HCH1H221J | CHIP C | 50V 220PF J | 1 | |
| | C54 | CK73GB1C104K | CHIP C | 16V 0.10UF K | 1 | |
| | C55 | CK73GB1H102K | CHIP C | 50V 1000PF K | 1 | |

| | | | | | | | |
|----------|------|-------------|------|----------|------|----------|------|
| MODEL | MARK | MODEL | MARK | MODEL | MARK | MODEL | MARK |
| KDC-452U | K2 | KDC-BT852HD | K0 | KDC-X496 | K4 | KDC-X896 | K1 |

| Safe | Symbol No. | Parts No. | Parts Name | Description | QTY | Local |
|------|------------|---------------|------------|---------------|-----|----------|
| | C56 | CK73EB1H475K | CHIP C | 50V 4.7UF K | 1 | |
| | C60 | CK73FB0J226M | CHIP C | 22UF M | 1 | |
| | C62 | CK73GB1C104K | CHIP C | 16V 0.10UF K | 1 | |
| | C63 | CK73EB1H475K | CHIP C | 50V 4.7UF K | 1 | |
| | C64 | CK73GB1C104K | CHIP C | 16V 0.10UF K | 1 | |
| | C66 | CC73GCH1H471J | CHIP C | 50V 470PF J | 1 | |
| | C67 | CC73HCH1H270J | CHIP C | 50V 27PF J | 1 | |
| | C68 | CK73GB1H222K | CHIP C | 50V 2200PF K | 1 | |
| | C69 | CC73GCH1H471J | CHIP C | 50V 470PF J | 1 | |
| | C71 | CK73GB1C104K | CHIP C | 16V 0.10UF K | 1 | |
| | C72 | CK73GB1A105K | CHIP C | 10V 1.0UF K | 1 | |
| | C80 | CK73GB1C104K | CHIP C | 16V 0.10UF K | 1 | |
| | C81 | CD04BR1C221M | ELECTRO | 220UF 16WV | 1 | |
| | C91 | CK73GB1H102K | CHIP C | 50V 1000PF K | 1 | K0,K4,K1 |
| | C92 | CK73GB1A105K | CHIP C | 10V 1.0UF K | 1 | K0,K4,K1 |
| | C93 | CC73HCH1H470J | CHIP C | 50V 47PF J | 1 | K0,K4,K1 |
| | C95 | CD04BN1C221M | ELECTRO | 220UF 16WV | 1 | K0,K4,K1 |
| | C101 | CK73GB1H103K | CHIP C | 50V 0.010UF K | 1 | |
| | C102 | CK73GB1H104K | CHIP C | 50V 0.10UF K | 1 | |
| | C105 | CK73HB0J105K | CHIP C | 6.3V 1.0UF K | 1 | |
| | C106 | CK73GB1H223K | CHIP C | 50V 0.022UF K | 1 | |
| | C202 | CC73HCH1H180J | CHIP C | 50V 18PF J | 1 | |
| | C203 | CC73HCH1H220J | CHIP C | 50V 22PF J | 1 | |
| | C204 | CK73GB1C104K | CHIP C | 16V 0.10UF K | 1 | |
| | C205 | CK73GB1C104K | CHIP C | 16V 0.10UF K | 1 | |
| | C210 | CK73HB1A104K | CHIP C | 10V 0.10UF K | 1 | |
| | C211 | CK73HB1A104K | CHIP C | 10V 0.10UF K | 1 | |
| | C212 | CK73GB1C104K | CHIP C | 16V 0.10UF K | 1 | |
| | C213 | CK73GB1C104K | CHIP C | 16V 0.10UF K | 1 | |
| | C214 | CK73GB1C104K | CHIP C | 16V 0.10UF K | 1 | |
| | C215 | CK73HB1A104K | CHIP C | 10V 0.10UF K | 1 | |
| | C216 | CK73HB1A104K | CHIP C | 10V 0.10UF K | 1 | |
| | C217 | CC73HCH1H080D | CHIP C | 50V 8.0PF D | 1 | |
| | C218 | CC73HCH1H080D | CHIP C | 50V 8.0PF D | 1 | |
| | C261 | CK73HB1A104K | CHIP C | 10V 0.10UF K | 1 | |
| | C301 | CD04AS1HR47M | ELECTRO | 0.47UF 50WV | 1 | |
| | C302 | CD04AS1HR47M | ELECTRO | 0.47UF 50WV | 1 | |
| | C303 | CK73GB1C104K | CHIP C | 16V 0.10UF K | 1 | |
| | C304 | CK73GB1C104K | CHIP C | 16V 0.10UF K | 1 | |
| | C305 | CK73GB1H102K | CHIP C | 50V 1000PF K | 1 | |
| | C306 | CK73GB1H102K | CHIP C | 50V 1000PF K | 1 | |
| | C307 | CD04AS0J470M | ELECTRO | 47UF 6.3WV | 1 | |
| | C308 | CK73GB1H103K | CHIP C | 50V 0.010UF K | 1 | |
| | C311 | CC73GCH1H020C | CHIP C | 50V 2.0PF C | 1 | |
| | C315 | CK73GB1H102K | CHIP C | 50V 1000PF K | 1 | |
| | C316 | CK73HB1H102K | CHIP C | 50V 1000PF K | 1 | |
| | C317 | CK73HB0J105K | CHIP C | 6.3V 1.0UF K | 1 | |
| | C318 | CK73HB1E103K | CHIP C | 25V 0.010UF K | 1 | |
| | C319 | CK73GB0J225K | CHIP C | 6.3V 2.2UF K | 1 | |
| | C401 | CD04AS1C470M | ELECTRO | 47UF 16WV | 1 | |
| | C403 | CD04AS1H010M | ELECTRO | 1UF 50WV | 1 | |
| | C404 | CK73GB1A105K | CHIP C | 10V 1.0UF K | 1 | |
| | C405 | CK73GB1A105K | CHIP C | 10V 1.0UF K | 1 | |
| | C406 | CK73GB1A105K | CHIP C | 10V 1.0UF K | 1 | |
| | C407 | CK73GB1A105K | CHIP C | 10V 1.0UF K | 1 | |
| | C502 | CC73HCH1H330J | CHIP C | 50V 33PF J | 1 | |
| | C503 | CK73HB1H102K | CHIP C | 50V 1000PF K | 1 | |
| | C504 | CC73HCH1H060D | CHIP C | 50V 6.0PF D | 1 | |
| | C505 | CC73HCH1H470J | CHIP C | 50V 47PF J | 1 | |
| | C507 | CK73HB1H102K | CHIP C | 50V 1000PF K | 1 | |
| | C509 | CK73HB1E103K | CHIP C | 25V 0.010UF K | 1 | |
| | C510 | CK73HB1E103K | CHIP C | 25V 0.010UF K | 1 | |
| | C511 | CK73HB1A104K | CHIP C | 10V 0.10UF K | 1 | |
| | C512 | CK73GB1A105K | CHIP C | 10V 1.0UF K | 1 | |
| | C513 | CK73HB1A104K | CHIP C | 10V 0.10UF K | 1 | |
| | C514 | CK73HB1A104K | CHIP C | 10V 0.10UF K | 1 | |
| | C515 | CK73HB1E103K | CHIP C | 25V 0.010UF K | 1 | |
| | C516 | CK73HB1E103K | CHIP C | 25V 0.010UF K | 1 | |
| | C517 | CK73FB0J106K | CHIP C | 6.3V 10UF K | 1 | |
| | C518 | CK73FB0J106K | CHIP C | 6.3V 10UF K | 1 | |
| | C519 | CK73GB1C104K | CHIP C | 16V 0.10UF K | 1 | |
| | C520 | CK73GB1H103K | CHIP C | 50V 0.010UF K | 1 | |
| | C521 | CK73HB1H102K | CHIP C | 50V 1000PF K | 1 | |
| | C522 | CC73HCH1H040C | CHIP C | 50V 4.0PF C | 1 | |
| | C523 | CC73HCH1H120J | CHIP C | 50V 12PF J | 1 | |
| | C524 | CC73GCH1H020C | CHIP C | 50V 2.0PF C | 1 | |
| | C525 | CK73HB1H102K | CHIP C | 50V 1000PF K | 1 | |
| | C526 | CK73HB1E103K | CHIP C | 25V 0.010UF K | 1 | |
| | C527 | CK73GB1C104K | CHIP C | 16V 0.10UF K | 1 | |
| | C528 | CC73HCH1H820J | CHIP C | 50V 82PF J | 1 | |
| | C529 | CC73HCH1H101J | CHIP C | 50V 100PF J | 1 | |
| | C530 | CK73HB1E103K | CHIP C | 25V 0.010UF K | 1 | |
| | C531 | CK73HB1A104K | CHIP C | 10V 0.10UF K | 1 | |
| | C532 | CK73GB1A474K | CHIP C | 10V 0.47UF K | 1 | |
| | C533 | CK73HB1E103K | CHIP C | 25V 0.010UF K | 1 | |
| | C534 | CK73HB1E103K | CHIP C | 25V 0.010UF K | 1 | |
| | C535 | CK73GB1C104K | CHIP C | 16V 0.10UF K | 1 | K2,K4 |
| | C535 | CK73GB1H102K | CHIP C | 50V 1000PF K | 1 | K0,K1 |
| | C537 | CK73GB1A105K | CHIP C | 10V 1.0UF K | 1 | |
| | C538 | CK73GB1C104K | CHIP C | 16V 0.10UF K | 1 | |
| | C548 | CC73GCH1H040C | CHIP C | 50V 4.0PF C | 1 | |
| | C549 | CC73GCH1H040C | CHIP C | 50V 4.0PF C | 1 | |

| | | | | | | | |
|----------|------|-------------|------|----------|------|----------|------|
| MODEL | MARK | MODEL | MARK | MODEL | MARK | MODEL | MARK |
| KDC-452U | K2 | KDC-BT852HD | K0 | KDC-X496 | K4 | KDC-X896 | K1 |

| Safe | Symbol No. | Parts No. | Parts Name | Description | QTY | Local |
|------|------------|---------------|------------|------------------|-----|-------|
| | C550 | CD04AS1V100M | ELECTRO | 10UF 35WV | 1 | |
| | C551 | CK73GB0J225K | CHIP C | 6.3V 2.2UF K | 1 | |
| | C552 | CK73HB1A104K | CHIP C | 10V 0.10UF K | 1 | |
| | C553 | CK73GB1C104K | CHIP C | 16V 0.10UF K | 1 | |
| | C554 | CK73GB0J225K | CHIP C | 6.3V 2.2UF K | 1 | |
| | C555 | CK73GB1C104K | CHIP C | 16V 0.10UF K | 1 | |
| | C556 | CK73GB1C104K | CHIP C | 16V 0.10UF K | 1 | |
| | C557 | CC73HCH1H100D | CHIP C | 50V 10PF D | 1 | |
| | C558 | CC73HCH1H100D | CHIP C | 50V 10PF D | 1 | |
| | C559 | CK73GB1H102K | CHIP C | 50V 1000PF K | 1 | |
| | C560 | CK73GB1A105K | CHIP C | 10V 1.0UF K | 1 | |
| | C561 | CK73HB1A104K | CHIP C | 10V 0.10UF K | 1 | |
| | C562 | CK73HB0J105K | CHIP C | 6.3V 1.0UF K | 1 | |
| | C563 | CK73GB1H472K | CHIP C | 50V 4700PF K | 1 | |
| | C564 | CK73GB1H472K | CHIP C | 50V 4700PF K | 1 | |
| | C565 | CK73HB0J224K | CHIP C | 6.3V 0.22UF K | 1 | |
| | C566 | CK73HB1E103K | CHIP C | 25V 0.010UF K | 1 | |
| | C567 | CK73GB1A105K | CHIP C | 10V 1.0UF K | 1 | |
| | C568 | CK73GB1A105K | CHIP C | 10V 1.0UF K | 1 | |
| | C571 | CK73GB1A105K | CHIP C | 10V 1.0UF K | 1 | |
| | C572 | CK73GB1A105K | CHIP C | 10V 1.0UF K | 1 | |
| | C573 | CC73GCH1H020C | CHIP C | 50V 2.0PF C | 1 | |
| | C575 | CK73GB1A105K | CHIP C | 10V 1.0UF K | 1 | |
| | C580 | CK73GB1A474K | CHIP C | 10V 0.47UF K | 1 | |
| | C581 | CD04BR1E220M | ELECTRO | 22UF 25WV | 1 | |
| | C584 | CK73HB1E103K | CHIP C | 25V 0.010UF K | 1 | |
| | C591 | CD04AS1V100M | ELECTRO | 10UF 35WV | 1 | K0,K1 |
| | C592 | CD04AS1V100M | ELECTRO | 10UF 35WV | 1 | K0,K1 |
| | C593 | CK73GB1H103K | CHIP C | 50V 0.010UF K | 1 | K0,K1 |
| | C594 | CK73GB1H103K | CHIP C | 50V 0.010UF K | 1 | K0,K1 |
| | C601 | CK73GB1H103K | CHIP C | 50V 0.010UF K | 1 | |
| | C602 | CK73HB0J105K | CHIP C | 6.3V 1.0UF K | 1 | |
| | C603 | CK73GB1C104K | CHIP C | 16V 0.10UF K | 1 | |
| | C604 | CK73GB1C104K | CHIP C | 16V 0.10UF K | 1 | |
| | C651 | CK73GB1A105K | CHIP C | 10V 1.0UF K | 1 | |
| | C652 | CK73GB1A105K | CHIP C | 10V 1.0UF K | 1 | |
| | C653 | CD04AS0J470M | ELECTRO | 47UF 6.3WV | 1 | |
| | C701 | CD04AS1V100M | ELECTRO | 10UF 35WV | 1 | |
| | C702 | CD04AS1V100M | ELECTRO | 10UF 35WV | 1 | |
| | C703 | CD04AS1V100M | ELECTRO | 10UF 35WV | 1 | |
| | C704 | CD04AS1V100M | ELECTRO | 10UF 35WV | 1 | |
| | C705 | CD04AS1V100M | ELECTRO | 10UF 35WV | 1 | |
| | C706 | CD04AS1V100M | ELECTRO | 10UF 35WV | 1 | |
| | C801 | CK73GB1C224K | CHIP C | 16V 0.22UF K | 1 | |
| | C802 | CK73GB1C224K | CHIP C | 16V 0.22UF K | 1 | |
| | C803 | CK73GB1C224K | CHIP C | 16V 0.22UF K | 1 | |
| | C804 | CK73GB1C224K | CHIP C | 16V 0.22UF K | 1 | |
| | C805 | CD04AS1V100M | ELECTRO | 10UF 35WV | 1 | |
| | C806 | CK73GB1A105K | CHIP C | 10V 1.0UF K | 1 | |
| | C807 | CK73HB0J105K | CHIP C | 6.3V 1.0UF K | 1 | |
| | C808 | CK73GB1A105K | CHIP C | 10V 1.0UF K | 1 | |
| | C900 | CC73GCH1H020C | CHIP C | 50V 2.0PF C | 1 | K0,K1 |
| | C901 | CK73GB1C104K | CHIP C | 16V 0.10UF K | 1 | K0,K1 |
| | C902 | CD04AS0J101M | ELECTRO | 6.3v 100UF 6.3WV | 1 | K0,K1 |
| | C903 | CC73GCH1H470J | CHIP C | 50V 47PF J | 1 | K0,K1 |
| | C904 | CC73GCH1H470J | CHIP C | 50V 47PF J | 1 | K0,K1 |
| | C905 | CK73GB1A105K | CHIP C | 10V 1.0UF K | 1 | K0,K1 |
| | C906 | CK73GB1A105K | CHIP C | 10V 1.0UF K | 1 | K0,K1 |
| | C908 | C90-6989-05 | ELECTRO | 330UF 6.3WV | 1 | K0,K1 |
| | C909 | CK73GB1C104K | CHIP C | 16V 0.10UF K | 1 | K0,K1 |
| | C910 | CD04BN1C221M | ELECTRO | 220UF 16WV | 1 | K0,K1 |
| | C912 | CK73GB1C104K | CHIP C | 16V 0.10UF K | 1 | K0,K1 |
| | C913 | CK73FB0J106K | CHIP C | 6.3V 10UF K | 1 | K0,K1 |
| | C915 | CK73FB0J106K | CHIP C | 6.3V 10UF K | 1 | K0,K1 |
| | C918 | CK73GB1A105K | CHIP C | 10V 1.0UF K | 1 | K0,K1 |
| | C919 | CK73GB1A105K | CHIP C | 10V 1.0UF K | 1 | K0,K1 |
| | C920 | CC73GCH1H470J | CHIP C | 50V 47PF J | 1 | K0,K1 |
| | C921 | CC73GCH1H470J | CHIP C | 50V 47PF J | 1 | K0,K1 |
| | C927 | CK73GB1A105K | CHIP C | 10V 1.0UF K | 1 | K0,K1 |
| | C928 | CK73GB1A105K | CHIP C | 10V 1.0UF K | 1 | K0,K1 |
| | C943 | CK73GB1A105K | CHIP C | 10V 1.0UF K | 1 | K0,K1 |
| | C944 | CK73GB1A105K | CHIP C | 10V 1.0UF K | 1 | K0,K1 |
| | R1 | RK73FB2B102J | CHIP R | 1.0K J 1/8W | 1 | |
| | R2 | RK73HB1J102J | CHIP R | 1.0K J 1/16W | 1 | |
| | R50 | RK73GB2A302J | CHIP R | 3.0K J 1/10W | 1 | |
| | R51 | RK73GH2A243D | CHIP R | 24K D 1/10W | 1 | |
| | R52 | RK73GH2A753D | CHIP R | 75K D 1/10W | 1 | |
| | R53 | RK73HB1J683J | CHIP R | 68K J 1/16W | 1 | |
| | R54 | RK73GH2A304D | CHIP R | 300K D 1/10W | 1 | |
| | R55 | RK73GH2A164D | CHIP R | 160K D 1/10W | 1 | |
| | R56 | RK73GH2A913D | CHIP R | 91K D 1/10W | 1 | |
| | R57 | RK73HB1J102J | CHIP R | 1.0K J 1/16W | 1 | |
| | R58 | RK73HB1J473J | CHIP R | 47K J 1/16W | 1 | |
| | R59 | RK73EB2E150J | CHIP R | 15 J 1/4W | 1 | |
| | R61 | RK73GH2A273D | CHIP R | 27K D 1/10W | 1 | |
| | R62 | RK73GH2A623D | CHIP R | 62K D 1/10W | 1 | |
| | R64 | RK73GH2A153D | CHIP R | 15K D 1/10W | 1 | |
| | R65 | RK73GB2A152J | CHIP R | 1.5K J 1/10W | 1 | |
| | R66 | R92-5244-05 | CHIP R | 0.039 | 1 | |
| | R67 | RK73GB2A752J | CHIP R | 7.5K J 1/10W | 1 | |
| | R69 | RK73GH2A273D | CHIP R | 27K D 1/10W | 1 | |
| | R70 | RK73EB2E330J | CHIP R | 33 J 1/4W | 1 | |
| | R71 | RK73EB2E470J | CHIP R | 47 J 1/4W | 1 | |

| | | | | | | | |
|----------|------|-------------|------|----------|------|----------|------|
| MODEL | MARK | MODEL | MARK | MODEL | MARK | MODEL | MARK |
| KDC-452U | K2 | KDC-BT852HD | K0 | KDC-X496 | K4 | KDC-X896 | K1 |

| Safe | Symbol No. | Parts No. | Parts Name | Description | QTY | Local |
|------|------------|--------------|------------|--------------|-----|----------|
| | R72 | RK73EB2E470J | CHIP R | 47 J 1/4W | 1 | |
| | R76 | RK73HB1J223J | CHIP R | 22K J 1/16W | 1 | |
| | R77 | RK73HB1J101J | CHIP R | 100 J 1/16W | 1 | |
| | R91 | RK73GB2A103J | CHIP R | 10K J 1/10W | 1 | K0,K4,K1 |
| | R92 | RK73FB2B152J | CHIP R | 1.5K J 1/8W | 1 | K0,K4,K1 |
| | R93 | RK73FB2B201J | CHIP R | 200 J 1/8W | 1 | K0,K4,K1 |
| | R94 | RK73FB2B4R7J | CHIP R | 4.7 J 1/8W | 1 | K0,K4,K1 |
| | R95 | RK73FB2B561J | CHIP R | 560 J 1/8W | 1 | K0,K4,K1 |
| | R96 | RK73GH2A562D | CHIP R | 5.6K D 1/10W | 1 | K0,K4,K1 |
| | R97 | RK73GH2A432D | CHIP R | 4.3K D 1/10W | 1 | K0,K4,K1 |
| | R98 | RK73FB2B432J | CHIP R | 4.3K J 1/8W | 1 | K0,K4,K1 |
| | R101 | RK73FB2B472J | CHIP R | 4.7K J 1/8W | 1 | |
| | R102 | RK73FB2B472J | CHIP R | 4.7K J 1/8W | 1 | |
| | R103 | RK73EB2E102J | CHIP R | 1.0K J 1/4W | 1 | |
| | R104 | RK73EB2E102J | CHIP R | 1.0K J 1/4W | 1 | |
| | R105 | RK73EB2E102J | CHIP R | 1.0K J 1/4W | 1 | |
| | R106 | RK73EB2E333J | CHIP R | 33K J 1/4W | 1 | |
| | R107 | RK73GB2A103J | CHIP R | 10K J 1/10W | 1 | |
| | R108 | RK73GB2A223J | CHIP R | 22K J 1/10W | 1 | |
| | R109 | RK73FB2B683J | CHIP R | 68K J 1/8W | 1 | |
| | R110 | RK73GB2A473J | CHIP R | 47K J 1/10W | 1 | |
| | R111 | RK73EB2E203J | CHIP R | 20K J 1/4W | 1 | |
| | R112 | RK73HB1J104J | CHIP R | 100K J 1/16W | 1 | |
| | R113 | RK73GB2A103J | CHIP R | 10K J 1/10W | 1 | |
| | R114 | RK73HB1J103J | CHIP R | 10K J 1/16W | 1 | |
| | R115 | RK73GB2A103J | CHIP R | 10K J 1/10W | 1 | |
| | R117 | RK73GB2A123J | CHIP R | 12K J 1/10W | 1 | |
| | R118 | RK73GB2A683J | CHIP R | 68K J 1/10W | 1 | |
| | R119 | RK73GB2A103J | CHIP R | 10K J 1/10W | 1 | |
| | R120 | RK73GB2A104J | CHIP R | 100K J 1/10W | 1 | |
| | R121 | RK73EB2E103J | CHIP R | 10K J 1/4W | 1 | |
| | R124 | RK73HB1J363J | CHIP R | 36K J 1/16W | 1 | |
| | R125 | RK73HB1J104J | CHIP R | 100K J 1/16W | 1 | |
| | R126 | RK73HB1J000J | CHIP R | 0.0 J 1/16W | 1 | |
| | R202 | RK73GB2A102J | CHIP R | 1.0K J 1/10W | 1 | |
| | R203 | RK73GB2A223J | CHIP R | 22K J 1/10W | 1 | |
| | R204 | RK73GB2A104J | CHIP R | 100K J 1/10W | 1 | |
| | R205 | RK73HB1J102J | CHIP R | 1.0K J 1/16W | 1 | |
| | R206 | RK73GB2A100J | CHIP R | 10 J 1/10W | 1 | |
| | R207 | RK73GB2A153J | CHIP R | 15K J 1/10W | 1 | |
| | R208 | RK73GB2A100J | CHIP R | 10 J 1/10W | 1 | |
| | R209 | RK73GB2A153J | CHIP R | 15K J 1/10W | 1 | |
| | R210 | RK73GB2A101J | CHIP R | 100 J 1/10W | 1 | |
| | R212 | RK73GB2A473J | CHIP R | 47K J 1/10W | 1 | K2,K1 |
| | R212 | RK73GB2A223J | CHIP R | 22K J 1/10W | 1 | K4 |
| | R213 | RK73GB2A473J | CHIP R | 47K J 1/10W | 1 | K0,K4 |
| | R216 | RK73HB1J104J | CHIP R | 100K J 1/16W | 1 | |
| | R217 | RK73GB2A473J | CHIP R | 47K J 1/10W | 1 | |
| | R218 | RK73GB2A102J | CHIP R | 1.0K J 1/10W | 1 | |
| | R219 | RK73GB2A473J | CHIP R | 47K J 1/10W | 1 | |
| | R220 | RK73HB1J104J | CHIP R | 100K J 1/16W | 1 | |
| | R222 | RK73HB1J101J | CHIP R | 100 J 1/16W | 1 | |
| | R223 | RK73HB1J102J | CHIP R | 1.0K J 1/16W | 1 | |
| | R224 | RK73HB1J101J | CHIP R | 100 J 1/16W | 1 | |
| | R225 | RK73HB1J101J | CHIP R | 100 J 1/16W | 1 | |
| | R226 | RK73HB1J223J | CHIP R | 22K J 1/16W | 1 | |
| | R227 | RK73HB1J223J | CHIP R | 22K J 1/16W | 1 | |
| | R228 | RK73GB2A101J | CHIP R | 100 J 1/10W | 1 | |
| | R229 | RK73GB2A101J | CHIP R | 100 J 1/10W | 1 | |
| | R230 | RK73HB1J223J | CHIP R | 22K J 1/16W | 1 | |
| | R231 | RK73HB1J101J | CHIP R | 100 J 1/16W | 1 | |
| | R232 | RK73GB2A102J | CHIP R | 1.0K J 1/10W | 1 | |
| | R233 | RK73HB1J101J | CHIP R | 100 J 1/16W | 1 | |
| | R234 | RK73HB1J102J | CHIP R | 1.0K J 1/16W | 1 | |
| | R238 | RK73EB2E471J | CHIP R | 470 J 1/4W | 1 | |
| | R239 | RK73HB1J104J | CHIP R | 100K J 1/16W | 1 | |
| | R240 | RK73GB2A332J | CHIP R | 3.3K J 1/10W | 1 | |
| | R241 | RK73GB2A332J | CHIP R | 3.3K J 1/10W | 1 | |
| | R261 | RK73GB2A223J | CHIP R | 22K J 1/10W | 1 | |
| | R262 | RK73HB1J223J | CHIP R | 22K J 1/16W | 1 | |
| | R263 | RK73HB1J333J | CHIP R | 33K J 1/16W | 1 | |
| | R266 | RK73GB2A332J | CHIP R | 3.3K J 1/10W | 1 | |
| | R267 | RK73GB2A332J | CHIP R | 3.3K J 1/10W | 1 | |
| | R271 | RK73HB1J101J | CHIP R | 100 J 1/16W | 1 | |
| | R301 | RK73GB2A222J | CHIP R | 2.2K J 1/10W | 1 | |
| | R302 | RK73HB1J101J | CHIP R | 100 J 1/16W | 1 | |
| | R303 | RK73GB2A222J | CHIP R | 2.2K J 1/10W | 1 | |
| | R304 | RK73HB1J101J | CHIP R | 100 J 1/16W | 1 | |
| | R305 | RK73GB2A222J | CHIP R | 2.2K J 1/10W | 1 | |
| | R306 | RK73GB2A222J | CHIP R | 2.2K J 1/10W | 1 | |
| | R307 | RK73HB1J222J | CHIP R | 2.2K J 1/16W | 1 | |
| | R308 | RK73GB2A222J | CHIP R | 2.2K J 1/10W | 1 | |
| | R309 | RK73HB1J101J | CHIP R | 100 J 1/16W | 1 | |
| | R314 | RK73GB2A223J | CHIP R | 22K J 1/10W | 1 | |
| | R315 | RK73GB2A300J | CHIP R | 30 J 1/10W | 1 | |
| | R316 | RK73HB1J473J | CHIP R | 47K J 1/16W | 1 | |
| | R317 | RK73HB1J473J | CHIP R | 47K J 1/16W | 1 | |
| | R321 | RK73GB2A473J | CHIP R | 47K J 1/10W | 1 | |
| | R323 | RK73EB2E102J | CHIP R | 1.0K J 1/4W | 1 | |
| | R324 | RK73EB2E102J | CHIP R | 1.0K J 1/4W | 1 | |
| | R327 | RK73HB1J473J | CHIP R | 47K J 1/16W | 1 | |
| | R331 | RK73EB2E102J | CHIP R | 1.0K J 1/4W | 1 | |

| | | | | | | | |
|----------|------|-------------|------|----------|------|----------|------|
| MODEL | MARK | MODEL | MARK | MODEL | MARK | MODEL | MARK |
| KDC-452U | K2 | KDC-BT852HD | K0 | KDC-X496 | K4 | KDC-X896 | K1 |

| Safe | Symbol No. | Parts No. | Parts Name | Description | QTY | Local |
|------|------------|--------------|------------|----------------------|-----|-------|
| | R332 | RK73EB2E102J | CHIP R | 1.0K J 1/4W | 1 | |
| | R333 | RK73EB2E222J | CHIP R | 2.2K J 1/4W | 1 | |
| | R334 | RK73EB2E102J | CHIP R | 1.0K J 1/4W | 1 | |
| | R335 | RK73EB2E102J | CHIP R | 1.0K J 1/4W | 1 | |
| | R336 | RK73EB2E102J | CHIP R | 1.0K J 1/4W | 1 | |
| | R337 | RK73GB2A103J | CHIP R | 10K J 1/10W | 1 | |
| | R338 | RK73GB2A103J | CHIP R | 10K J 1/10W | 1 | |
| | R339 | RK73EB2E100J | CHIP R | 10 J 1/4W | 1 | |
| | R340 | RK73EB2E100J | CHIP R | 10 J 1/4W | 1 | |
| | R341 | RK73EB2E4R7J | CHIP R | 4.7 J 1/4W | 1 | |
| | R342 | RK73EB2E102J | CHIP R | 1.0K J 1/4W | 1 | |
| | R343 | RK73GB2A102J | CHIP R | 1.0K J 1/10W | 1 | |
| | R401 | RK73GB2A103J | CHIP R | 10K J 1/10W | 1 | |
| | R406 | RK73GB2A000J | CHIP R | 0.0 J 1/10W | 1 | K2 |
| | R407 | RK73HB1J472J | CHIP R | 4.7K J 1/16W | 1 | |
| | R501 | RK73HB1J221J | CHIP R | 220 J 1/16W | 1 | |
| | R502 | RK73HB1J751J | CHIP R | 750 J 1/16W | 1 | |
| | R503 | RK73HB1J223J | CHIP R | 22K J 1/16W | 1 | |
| | R510 | RK73EB2E000J | CHIP R | 0.0 J 1/4W 3216 SIZE | 1 | |
| | R521 | RK73HB1J474J | CHIP R | 470K J 1/16W | 1 | |
| | R522 | RK73HB1J474J | CHIP R | 470K J 1/16W | 1 | |
| | R525 | RK73HB1J105J | CHIP R | 1.0M J 1/16W | 1 | |
| | R526 | RK73GB2A330J | CHIP R | 33 J 1/10W | 1 | |
| | R527 | RK73HB1J471J | CHIP R | 470 J 1/16W | 1 | |
| | R530 | RK73HB1J681J | CHIP R | 680 J 1/16W | 1 | |
| | R534 | RK73GB2A473J | CHIP R | 47K J 1/10W | 1 | |
| | R535 | RK73HB1J101J | CHIP R | 100 J 1/16W | 1 | |
| | R536 | RK73HB1J101J | CHIP R | 100 J 1/16W | 1 | |
| | R541 | RK73GB2A511J | CHIP R | 510 J 1/10W | 1 | K0,K1 |
| | R542 | RK73GB2A511J | CHIP R | 510 J 1/10W | 1 | K0,K1 |
| | R543 | RK73GB2A511J | CHIP R | 510 J 1/10W | 1 | K0,K1 |
| | R548 | RK73GB2A332J | CHIP R | 3.3K J 1/10W | 1 | |
| | R549 | RK73GB2A332J | CHIP R | 3.3K J 1/10W | 1 | |
| | R573 | RK73GB2A300J | CHIP R | 30 J 1/10W | 1 | |
| | R576 | RK73GB2A102J | CHIP R | 1.0K J 1/10W | 1 | |
| | R581 | RK73GB2A102J | CHIP R | 1.0K J 1/10W | 1 | |
| | R601 | RK73HB1J102J | CHIP R | 1.0K J 1/16W | 1 | |
| | R602 | RK73GB2A473J | CHIP R | 47K J 1/10W | 1 | |
| | R604 | RK73GB2A102J | CHIP R | 1.0K J 1/10W | 1 | |
| | R605 | RK73HB1J221J | CHIP R | 220 J 1/16W | 1 | |
| | R607 | RK73GB2A473J | CHIP R | 47K J 1/10W | 1 | |
| | R608 | RK73GB2A473J | CHIP R | 47K J 1/10W | 1 | |
| | R609 | RK73GB2A473J | CHIP R | 47K J 1/10W | 1 | |
| | R611 | RK73GB2A221J | CHIP R | 220 J 1/10W | 1 | |
| | R612 | RK73GB2A221J | CHIP R | 220 J 1/10W | 1 | |
| | R613 | RK73GB2A101J | CHIP R | 100 J 1/10W | 1 | |
| | R616 | RK73GB2A102J | CHIP R | 1.0K J 1/10W | 1 | |
| | R617 | RK73GB2A102J | CHIP R | 1.0K J 1/10W | 1 | |
| | R618 | RK73GB2A102J | CHIP R | 1.0K J 1/10W | 1 | |
| | R621 | RK73GB2A221J | CHIP R | 220 J 1/10W | 1 | |
| | R622 | RK73GB2A221J | CHIP R | 220 J 1/10W | 1 | |
| | R623 | RK73GB2A221J | CHIP R | 220 J 1/10W | 1 | |
| | R624 | RK73HB1J473J | CHIP R | 47K J 1/16W | 1 | |
| | R625 | RK73HB1J473J | CHIP R | 47K J 1/16W | 1 | |
| | R651 | RK73EB2E100J | CHIP R | 10 J 1/4W | 1 | |
| | R652 | RK73EB2E100J | CHIP R | 10 J 1/4W | 1 | |
| | R653 | RK73EB2E4R7J | CHIP R | 4.7 J 1/4W | 1 | |
| | R655 | RK73HB1J103J | CHIP R | 10K J 1/16W | 1 | |
| | R656 | RK73HB1J103J | CHIP R | 10K J 1/16W | 1 | |
| | R661 | RK73EB2E221J | CHIP R | 220 J 1/4W | 1 | |
| | R662 | RK73EB2E101J | CHIP R | 100 J 1/4W | 1 | |
| | R663 | RK73EB2E221J | CHIP R | 220 J 1/4W | 1 | |
| | R664 | RK73GB2A473J | CHIP R | 47K J 1/10W | 1 | |
| | R665 | RK73HB1J101J | CHIP R | 100 J 1/16W | 1 | |
| | R701 | RK73GB2A331J | CHIP R | 330 J 1/10W | 1 | |
| | R702 | RK73GB2A331J | CHIP R | 330 J 1/10W | 1 | |
| | R703 | RK73GB2A223J | CHIP R | 22K J 1/10W | 1 | |
| | R704 | RK73GB2A223J | CHIP R | 22K J 1/10W | 1 | |
| | R705 | RK73FB2B181J | CHIP R | 180 J 1/8W | 1 | |
| | R706 | RK73FB2B181J | CHIP R | 180 J 1/8W | 1 | |
| | R707 | RK73GB2A331J | CHIP R | 330 J 1/10W | 1 | |
| | R708 | RK73GB2A331J | CHIP R | 330 J 1/10W | 1 | |
| | R709 | RK73GB2A223J | CHIP R | 22K J 1/10W | 1 | |
| | R710 | RK73GB2A223J | CHIP R | 22K J 1/10W | 1 | |
| | R711 | RK73FB2B181J | CHIP R | 180 J 1/8W | 1 | |
| | R712 | RK73FB2B181J | CHIP R | 180 J 1/8W | 1 | |
| | R713 | RK73GB2A331J | CHIP R | 330 J 1/10W | 1 | |
| | R714 | RK73GB2A331J | CHIP R | 330 J 1/10W | 1 | |
| | R715 | RK73GB2A223J | CHIP R | 22K J 1/10W | 1 | |
| | R716 | RK73GB2A223J | CHIP R | 22K J 1/10W | 1 | |
| | R717 | RK73FB2B181J | CHIP R | 180 J 1/8W | 1 | |
| | R718 | RK73FB2B181J | CHIP R | 180 J 1/8W | 1 | |
| | R801 | RK73HB1J473J | CHIP R | 47K J 1/16W | 1 | |
| | R803 | RK73HB1J331J | CHIP R | 330 J 1/16W | 1 | |
| | R804 | RK73GB2A473J | CHIP R | 47K J 1/10W | 1 | |
| | R805 | RK73GB2A622J | CHIP R | 6.2K J 1/10W | 1 | |
| | R806 | RK73GB2A100J | CHIP R | 10 J 1/10W | 1 | |
| | R807 | RK73GB2A102J | CHIP R | 1.0K J 1/10W | 1 | |
| | R810 | RK73GB2A272J | CHIP R | 2.7K J 1/10W | 1 | |
| | R900 | RK73GB2A300J | CHIP R | 30 J 1/10W | 1 | K0,K1 |
| | R901 | RK73GB2A220J | CHIP R | 22 J 1/10W | 1 | K0,K1 |
| | R903 | RK73GB2A223J | CHIP R | 22K J 1/10W | 1 | K0,K1 |

| | | | | | | | |
|----------|------|-------------|------|----------|------|----------|------|
| MODEL | MARK | MODEL | MARK | MODEL | MARK | MODEL | MARK |
| KDC-452U | K2 | KDC-BT852HD | K0 | KDC-X496 | K4 | KDC-X896 | K1 |

| Safe | Symbol No. | Parts No. | Parts Name | Description | QTY | Local |
|---|------------|----------------|-------------------------------|--------------------------|-----|-------|
| | R904 | RK73GB2A223J | CHIP R | 22K J 1/10W | 1 | K0,K1 |
| | R905 | RK73GB2A223J | CHIP R | 22K J 1/10W | 1 | K0,K1 |
| | R906 | RK73GB2A223J | CHIP R | 22K J 1/10W | 1 | K0,K1 |
| | R907 | RK73GB2A2R2J | CHIP R | 2.2 J 1/10W | 1 | K0,K1 |
| | R908 | RK73GB2A222J | CHIP R | 2.2K J 1/10W | 1 | K0,K1 |
| | R909 | RK73GB2A222J | CHIP R | 2.2K J 1/10W | 1 | K0,K1 |
| | R915 | RK73GB2A000J | CHIP R | 0.0 J 1/10W 1608 | 1 | K0,K1 |
| | R917 | RK73GB2A223J | CHIP R | 22K J 1/10W | 1 | K0,K1 |
| | R918 | RK73GB2A223J | CHIP R | 22K J 1/10W | 1 | K0,K1 |
| | R919 | RK73GB2A223J | CHIP R | 22K J 1/10W | 1 | K0,K1 |
| | R920 | RK73GB2A223J | CHIP R | 22K J 1/10W | 1 | K0,K1 |
| | R921 | RK73EB2E101J | CHIP R | 100 J 1/4W | 1 | K0,K1 |
| | R922 | RK73EB2E101J | CHIP R | 100 J 1/4W | 1 | K0,K1 |
| | R923 | RK73GB2A102J | CHIP R | 1.0K J 1/10W | 1 | K0,K1 |
| | R924 | RK73GB2A102J | CHIP R | 1.0K J 1/10W | 1 | K0,K1 |
| | R943 | RK73GB2A222J | CHIP R | 2.2K J 1/10W | 1 | K0,K1 |
| | R944 | RK73GB2A102J | CHIP R | 1.0K J 1/10W | 1 | K0,K1 |
| | R945 | RK73HB1J101J | CHIP R | 100 J 1/16W | 1 | K0,K1 |
| | R946 | RK73HB1J471J | CHIP R | 470 J 1/16W | 1 | K0,K1 |
| △ | L1 | L33-2459-05 | CHOCO COIL ASSY | | 1 | |
| | L51 | L33-2462-05 | SMALL FIXED INDUCTOR | 22UH | 1 | |
| | L52 | L92-0639-05 | CHIP FERRITE | 1608 220AT100MHZ | 1 | |
| | L53 | L92-0639-05 | CHIP FERRITE | 1608 220AT100MHZ | 1 | |
| | L60 | L33-2462-05 | SMALL FIXED INDUCTOR | 22UH | 1 | |
| | L61 | L92-0639-05 | CHIP FERRITE | 1608 220AT100MHZ | 1 | |
| | L62 | L92-0639-05 | CHIP FERRITE | 1608 220AT100MHZ | 1 | |
| | L302 | NQR0682-001X | CHOCO COIL | | 1 | |
| | L401 | L40-4791-58 | SMALL FIXED INDUCTOR | | 1 | |
| | L405 | L92-0648-05 | CHIP FERRITE | 50 OHM | 1 | |
| | L500 | L92-0609-05 | CHIP FERRITE | | 1 | |
| | L501 | L41-1585-60 | SMALL FIXED INDUCTOR | | 1 | |
| | L502 | L41-3385-60 | SMALL FIXED INDUCTOR | | 1 | |
| | L511 | L92-0331-05 | CHIP FERRITE | | 1 | |
| | L513 | L92-0331-05 | CHIP FERRITE | | 1 | |
| | L521 | L41-1005-33 | SMALL FIXED INDUCTOR | 10U | 1 | |
| | L522 | L40-4781-86 | SMALL FIXED INDUCTOR | 0.47UH | 1 | |
| | L523 | L40-2281-86 | SMALL FIXED INDUCTOR | 0.22UH | 1 | |
| | L524 | L40-1891-86 | SMALL FIXED INDUCTOR | 1.8UH | 1 | |
| | L530 | L41-4705-33 | SMALL FIXED INDUCTOR | | 1 | |
| | L531 | L92-0331-05 | CHIP FERRITE | | 1 | |
| | L550 | L41-1095-33 | SMALL FIXED INDUCTOR | 1U | 1 | |
| | L551 | L92-0331-05 | CHIP FERRITE | | 1 | |
| | L553 | L92-0331-05 | CHIP FERRITE | | 1 | |
| | L554 | L92-0331-05 | CHIP FERRITE | | 1 | |
| | L556 | L92-0331-05 | CHIP FERRITE | | 1 | |
| | L560 | L92-0331-05 | CHIP FERRITE | | 1 | |
| | L561 | L92-0331-05 | CHIP FERRITE | | 1 | |
| | A590 | - | HD PROCESSOR UNIT | DSP MODULE | 1 | K0,K1 |
| | A901 | W02-5523-15 | ELECTRIC CIRCUIT MODULE | FC6000 HOR_INT-A | 1 | K0,K1 |
| | CN301 | E41-1828-05 | FLAT CABLE CONNECTOR | 1MM 30P SIDE | 1 | |
| | CN901 | E41-3325-05 | PIN ASSY | 24R-JMCS-G-B-TF(NSA) | 1 | K0,K1 |
| | CP301 | RK74HB1J101J | CHIP-COM | 100 J 1/16W | 1 | |
| | F1 | F53-0406-05 | FUSE | 2.5A/125V | 1 | |
| △ | J1 | E58-0991-05 | RECTANGULAR RECEPTACLE | DC-CN | 1 | |
| | J301 | E58-1144-05 | RECTANGULAR RECEPTACLE | 24PIN | 1 | |
| | J650 | QNZ0907-001 | CIR CONNECTOR | | 1 | |
| | J701 | E63-0972-05 | PIN JACK | 3PRE | 1 | |
| | J921 | E11-0625-05 | PHONE JACK | LGY6502-0900 | 1 | K0,K1 |
| | S301 | S70-0959-05 | TACT SWITCH | | 1 | |
| | TH801 | PRF18BE471QS2 | POSITIVE RESISTOR | PB-FREE | 1 | |
| | W500 | E30-6601-05 | CORD WITH PLUG | | 1 | |
| | W501 | R92-2053-05 | CHIP R | 0 OHM J 1/8W 3216 | 1 | |
| | X201 | L77-3846-05 | CRYSTAL RESONATOR (12MHZ) | 12MHZ | 1 | |
| | X202 | L77-2921-15 | CRYSTAL RESONATOR (32.768KHZ) | 32.768KHZ 12.5PF | 1 | |
| | X501 | NAX1117-001X | CRYSTAL | | 1 | |
| HD PROCESSOR UNIT (A590 IN X34-UNIT) <A590> | | | | | | |
| △ | IC101 | STA680Q | MOS-IC | | 1 | K0,K1 |
| △ | IC151 | GEU03533-01A | SV-ROM IC | | 1 | K0,K1 |
| △ | IC191 | M12L1281687TG2 | SV-DRAM IC | | 1 | K0,K1 |
| | C101 | CK73GB1C105K | CHIP C | 1.0UF K | 1 | K0,K1 |
| | C102 | CK73GB1H471K | CHIP C | 470PF K | 1 | K0,K1 |
| | C103 | CK73GB1C104K | CHIP C | 16V 0.10UF K W02-5469-05 | 1 | K0,K1 |
| | C104 | CK73GB1C104K | CHIP C | 16V 0.10UF K W02-5469-05 | 1 | K0,K1 |
| | C105 | CK73GB1C104K | CHIP C | 16V 0.10UF K W02-5469-05 | 1 | K0,K1 |
| | C106 | CK73GB1C104K | CHIP C | 16V 0.10UF K W02-5469-05 | 1 | K0,K1 |
| | C107 | CK73GB1C104K | CHIP C | 16V 0.10UF K W02-5469-05 | 1 | K0,K1 |
| | C108 | CK73GB1C104K | CHIP C | 16V 0.10UF K W02-5469-05 | 1 | K0,K1 |

| | | | | | | | |
|----------|------|-------------|------|----------|------|----------|------|
| MODEL | MARK | MODEL | MARK | MODEL | MARK | MODEL | MARK |
| KDC-452U | K2 | KDC-BT852HD | K0 | KDC-X496 | K4 | KDC-X896 | K1 |

| Safe | Symbol No. | Parts No. | Parts Name | Description | QTY | Local | |
|------|---------------------------------|---------------|----------------------|--------------------------|-----|-------|--|
| | C109 | CK73GB1C104K | CHIP C | 16V 0.10UF K W02-5469-05 | 1 | K0,K1 | |
| | C110 | CK73GB1C104K | CHIP C | 16V 0.10UF K W02-5469-05 | 1 | K0,K1 | |
| | C111 | CK73GB1C104K | CHIP C | 16V 0.10UF K W02-5469-05 | 1 | K0,K1 | |
| | C112 | CK73GB1C104K | CHIP C | 16V 0.10UF K W02-5469-05 | 1 | K0,K1 | |
| | C113 | CK73GB1C104K | CHIP C | 16V 0.10UF K W02-5469-05 | 1 | K0,K1 | |
| | C114 | CK73GB1C104K | CHIP C | 16V 0.10UF K W02-5469-05 | 1 | K0,K1 | |
| | C115 | CK73GB1C104K | CHIP C | 16V 0.10UF K W02-5469-05 | 1 | K0,K1 | |
| | C116 | CK73GB1C104K | CHIP C | 16V 0.10UF K W02-5469-05 | 1 | K0,K1 | |
| | C117 | CK73FB0J106K | CHIP C | 6.3V 10UF K W02-5469-05 | 1 | K0,K1 | |
| | C118 | CK73FB0J106K | CHIP C | 6.3V 10UF K W02-5469-05 | 1 | K0,K1 | |
| | C119 | CK73GB1C104K | CHIP C | 16V 0.10UF K W02-5469-05 | 1 | K0,K1 | |
| | C120 | CK73GB1C104K | CHIP C | 16V 0.10UF K W02-5469-05 | 1 | K0,K1 | |
| | C121 | CK73GB1C104K | CHIP C | 16V 0.10UF K W02-5469-05 | 1 | K0,K1 | |
| | C122 | CK73GB1C104K | CHIP C | 16V 0.10UF K W02-5469-05 | 1 | K0,K1 | |
| | C124 | CK73GB1C104K | CHIP C | 16V 0.10UF K W02-5469-05 | 1 | K0,K1 | |
| | C125 | CK73GB1C104K | CHIP C | 16V 0.10UF K W02-5469-05 | 1 | K0,K1 | |
| | C126 | CK73GB1C104K | CHIP C | 16V 0.10UF K W02-5469-05 | 1 | K0,K1 | |
| | C127 | CK73GB1C104K | CHIP C | 16V 0.10UF K W02-5469-05 | 1 | K0,K1 | |
| | C128 | CK73GB1C104K | CHIP C | 16V 0.10UF K W02-5469-05 | 1 | K0,K1 | |
| | C129 | CK73GB1C104K | CHIP C | 16V 0.10UF K W02-5469-05 | 1 | K0,K1 | |
| | C130 | CK73GB1C104K | CHIP C | 16V 0.10UF K W02-5469-05 | 1 | K0,K1 | |
| | C131 | CK73GB1C104K | CHIP C | 16V 0.10UF K W02-5469-05 | 1 | K0,K1 | |
| | C132 | CK73GB1C104K | CHIP C | 16V 0.10UF K W02-5469-05 | 1 | K0,K1 | |
| | C133 | CK73GB1C104K | CHIP C | 16V 0.10UF K W02-5469-05 | 1 | K0,K1 | |
| | C134 | CK73GB1C104K | CHIP C | 16V 0.10UF K W02-5469-05 | 1 | K0,K1 | |
| | C135 | CK73GB1C104K | CHIP C | 16V 0.10UF K W02-5469-05 | 1 | K0,K1 | |
| | C136 | CC73GCH1H030C | CHIP C | 3.0PF C | 1 | K0,K1 | |
| | C137 | CC73GCH1H040C | CHIP C | 50V 4.0PF C W02-5469-05 | 1 | K0,K1 | |
| | C138 | CK73FB0J106K | CHIP C | 6.3V 10UF K W02-5469-05 | 1 | K0,K1 | |
| | C144 | CC73GCH1H680J | CHIP C | 50V 68PF J | 1 | K0,K1 | |
| | C145 | CC73GCH1H680J | CHIP C | 50V 68PF J | 1 | K0,K1 | |
| | C146 | CC73GCH1H680J | CHIP C | 50V 68PF J | 1 | K0,K1 | |
| | C147 | CK73GB1C104K | CHIP C | 16V 0.10UF K W02-5469-05 | 1 | K0,K1 | |
| | C150 | CK73GB1C104K | CHIP C | 16V 0.10UF K W02-5469-05 | 1 | K0,K1 | |
| | C151 | CK73GB1C104K | CHIP C | 16V 0.10UF K W02-5469-05 | 1 | K0,K1 | |
| | C152 | CK73GB1C104K | CHIP C | 16V 0.10UF K W02-5469-05 | 1 | K0,K1 | |
| | C153 | CK73GB1C104K | CHIP C | 16V 0.10UF K W02-5469-05 | 1 | K0,K1 | |
| | C154 | CK73GB1C104K | CHIP C | 16V 0.10UF K W02-5469-05 | 1 | K0,K1 | |
| | C155 | CK73GB1C104K | CHIP C | 16V 0.10UF K W02-5469-05 | 1 | K0,K1 | |
| | C156 | CK73GB1C104K | CHIP C | 16V 0.10UF K W02-5469-05 | 1 | K0,K1 | |
| | R104 | RK73GB2A470J | CHIP R | 47 J 1/10W | 1 | K0,K1 | |
| | R105 | RK73GB2A470J | CHIP R | 47 J 1/10W | 1 | K0,K1 | |
| | R106 | RK73GB2A471J | CHIP R | 470 J 1/10W | 1 | K0,K1 | |
| | R108 | RK73GB2A470J | CHIP R | 47 J 1/10W | 1 | K0,K1 | |
| | R109 | RK73GB2A470J | CHIP R | 47 J 1/10W | 1 | K0,K1 | |
| | R110 | RK73GB2A103J | CHIP R | 10K J 1/10W | 1 | K0,K1 | |
| | R111 | RK73GB2A103J | CHIP R | 10K J 1/10W | 1 | K0,K1 | |
| | R112 | RK73GB2A103J | CHIP R | 10K J 1/10W | 1 | K0,K1 | |
| | R113 | RK73GB2A750J | CHIP R | 75 J 1/10W | 1 | K0,K1 | |
| | R114 | RK73GB2A102J | CHIP R | 1.0K J 1/10W | 1 | K0,K1 | |
| | R115 | RK73GB2A270J | CHIP R | 27 J 1/10W | 1 | K0,K1 | |
| | R116 | RK73GB2A470J | CHIP R | 47 J 1/10W | 1 | K0,K1 | |
| | R117 | RK73GB2A103J | CHIP R | 10K J 1/10W | 1 | K0,K1 | |
| | R118 | RK73GB2A103J | CHIP R | 10K J 1/10W | 1 | K0,K1 | |
| | R122 | RK73GB2A000J | CHIP R | 0.0 J 1/10W | 1 | K0,K1 | |
| | RA101 | RK74HB1J470J | CHIP-COM | 47 J 1/16W | 1 | K0,K1 | |
| | RA102 | RK74HB1J470J | CHIP-COM | 47 J 1/16W | 1 | K0,K1 | |
| | RA103 | RK74HB1J470J | CHIP-COM | 47 J 1/16W | 1 | K0,K1 | |
| | RA104 | RK74HB1J470J | CHIP-COM | 47 J 1/16W | 1 | K0,K1 | |
| | RA105 | RK74HB1J470J | CHIP-COM | 47 J 1/16W | 1 | K0,K1 | |
| | RA106 | RK74HB1J470J | CHIP-COM | 47 J 1/16W | 1 | K0,K1 | |
| | RA107 | RK74HB1J470J | CHIP-COM | 47 J 1/16W | 1 | K0,K1 | |
| | RA108 | RK74HB1J470J | CHIP-COM | 47 J 1/16W | 1 | K0,K1 | |
| | RA109 | RK74HB1J470J | CHIP-COM | 47 J 1/16W | 1 | K0,K1 | |
| | RA111 | RK74HB1J470J | CHIP-COM | 47 J 1/16W | 1 | K0,K1 | |
| | RA112 | RK74HB1J470J | CHIP-COM | 47 J 1/16W | 1 | K0,K1 | |
| | RA113 | RK74HB1J470J | CHIP-COM | 47 J 1/16W | 1 | K0,K1 | |
| | L101 | L40-1891-86 | SMALL FIXED INDUCTOR | | 1 | K0,K1 | |
| | L102 | L40-1891-86 | SMALL FIXED INDUCTOR | | 1 | K0,K1 | |
| | CN101 | E41-3220-08 | FLAT CABLE CONNECTOR | | 1 | K0,K1 | |
| | CN102 | E41-3221-08 | PIN ASSY | | 1 | K0,K1 | |
| | X101 | NAX1116-001X | CRYSTAL | | 1 | K0,K1 | |
| | SWITCH UNIT (X16-7250-1x) <X16> | | | | | | |
| | IC1 | W10-0743-08 | MICROCONTROLLER IC | | 1 | | |
| | IC3 | PIC95603 | ANALOGUE IC | | 1 | | |
| | Q1 | LTC023JUBFS8 | TRANSISTOR | | 1 | | |
| | Q2 | LTC023JUBFS8 | TRANSISTOR | | 1 | | |
| | Q3 | LTC023JUBFS8 | TRANSISTOR | | 1 | | |
| | Q4 | LTC023JUBFS8 | TRANSISTOR | | 1 | K2,K4 | |
| | Q5 | LTC023JUBFS8 | TRANSISTOR | | 1 | | |
| | Q6 | LTC023JUBFS8 | TRANSISTOR | | 1 | | |
| | Q7 | LTC023JUBFS8 | TRANSISTOR | | 1 | | |
| | Q8 | LTC023JUBFS8 | TRANSISTOR | | 1 | | |
| | Q9 | LTC023JUBFS8 | TRANSISTOR | | 1 | | |
| | Q10 | LTC023JUBFS8 | TRANSISTOR | | 1 | | |
| | Q11 | LTC023JUBFS8 | TRANSISTOR | | 1 | | |
| | Q12 | LTC023JUBFS8 | TRANSISTOR | | 1 | | |
| | Q13 | LTC043ZUBFS8 | TRANSISTOR | | 1 | | |
| | Q14 | LTC043ZUBFS8 | TRANSISTOR | | 1 | | |

| | | | | | | | |
|----------|------|-------------|------|----------|------|----------|------|
| MODEL | MARK | MODEL | MARK | MODEL | MARK | MODEL | MARK |
| KDC-452U | K2 | KDC-BT852HD | K0 | KDC-X496 | K4 | KDC-X896 | K1 |

| Safe | Symbol No. | Parts No. | Parts Name | Description | QTY | Local |
|------|------------|---------------|----------------------|----------------------|-----|-------|
| | D1 | NSSM065T-X | LED | | 1 | |
| | D2 | NSSM065T-X | LED | | 1 | |
| | D4 | NSSM065T-X | LED | | 1 | |
| | D5 | NSSM065T-X | LED | | 1 | |
| | D6 | NSSM065T-X | LED | | 1 | |
| | D10 | B30-1779-05 | LED(1608_SR) | | 1 | |
| | D11 | B30-1779-05 | LED(1608_SR) | | 1 | |
| | D12 | NSSM065T-X | LED | | 1 | |
| | D109 | HZM6.8ZMWA-E | Z DIODE | | 1 | |
| | D110 | MC2850-T111 | DIODE | | 1 | |
| | C1 | CK73HB0J105K | CHIP C | 6.3V 1.0UF K | 1 | |
| | C2 | CK73HB1E103K | CHIP C | 25V 0.010UF K | 1 | |
| | C3 | CK73HB1E103K | CHIP C | 25V 0.010UF K | 1 | |
| | C4 | CK73GB1H103K | CHIP C | 50V 0.010UF K | 1 | |
| | C5 | CK73GB0J225K | CHIP C | 6.3V 2.2UF K | 1 | |
| | C7 | CK73FB1C105K | CHIP C | 16V 1.0UF K | 1 | |
| | C9 | CK73GB1A105K | CHIP C | 10V 1.0UF K | 1 | |
| | C11 | CK73GB1A105K | CHIP C | 10V 1.0UF K | 1 | |
| | C13 | CK73HB0J105K | CHIP C | 6.3V 1.0UF K | 1 | |
| | C14 | CK73HB0J105K | CHIP C | 6.3V 1.0UF K | 1 | |
| | C15 | CK73GB1A105K | CHIP C | 10V 1.0UF K | 1 | |
| | C16 | CK73GB1A105K | CHIP C | 10V 1.0UF K | 1 | |
| | C17 | CK73FB1C105K | CHIP C | 16V 1.0UF K | 1 | |
| | C18 | CK73FB1C105K | CHIP C | 16V 1.0UF K | 1 | |
| | C19 | CK73HB1H472K | CHIP C | 50V 4700PF K | 1 | |
| | C20 | CK73GB1H472K | CHIP C | 50V 4700PF K | 1 | |
| | C101 | CK73EB1C106K | CHIP C | 16V 10UF K | 1 | |
| | C102 | CC73GCH1H101J | CHIP C | 50V 100PF J | 1 | |
| | C103 | CC73GCH1H101J | CHIP C | 50V 100PF J | 1 | |
| | C104 | CK73GB1H103K | CHIP C | 50V 0.010UF K | 1 | |
| | C106 | CK73GB1H102K | CHIP C | 50V 1000PF K | 1 | |
| | C107 | CK73GB1H102K | CHIP C | 50V 1000PF K | 1 | |
| | C108 | CK73GB1H103K | CHIP C | 50V 0.010UF K | 1 | |
| | R1 | RK73EB2E431J | CHIP R | 430 J 1/4W | 1 | |
| | R2 | RK73EB2E201J | CHIP R | 200 J 1/4W | 1 | |
| | R3 | RK73EB2E391J | CHIP R | 390 J 1/4W | 1 | |
| | R4 | RK73EB2E751J | CHIP R | 750 J 1/4W | 1 | |
| | R5 | RK73EB2E361J | CHIP R | 360 J 1/4W | 1 | |
| | R6 | RK73EB2E561J | CHIP R | 560 J 1/4W | 1 | |
| | R7 | RK73EB2E751J | CHIP R | 750 J 1/4W | 1 | |
| | R8 | RK73EB2E361J | CHIP R | 360 J 1/4W | 1 | K2,K4 |
| | R9 | RK73EB2E561J | CHIP R | 560 J 1/4W | 1 | |
| | R10 | RK73EB2E751J | CHIP R | 750 J 1/4W | 1 | |
| | R11 | RK73EB2E361J | CHIP R | 360 J 1/4W | 1 | |
| | R12 | RK73EB2E561J | CHIP R | 560 J 1/4W | 1 | |
| | R13 | RK73EB2E181J | CHIP R | 180 J 1/4W | 1 | |
| | R14 | RK73EB2E121J | CHIP R | 120 J 1/4W | 1 | |
| | R15 | RK73EB2E511J | CHIP R | 510 J 1/4W | 1 | |
| | R16 | RK73EB2E821J | CHIP R | 820 J 1/4W | 1 | |
| | R17 | RK73EB2E821J | CHIP R | 820 J 1/4W | 1 | |
| | R18 | RK73EB2E181J | CHIP R | 180 J 1/4W | 1 | |
| | R19 | RK73EB2E121J | CHIP R | 120 J 1/4W | 1 | |
| | R21 | RK73HB1J102J | CHIP R | 1.0K J 1/16W | 1 | |
| | R22 | RK73GB2A473J | CHIP R | 47K J 1/10W | 1 | |
| | R23 | RK73GB2A102J | CHIP R | 1.0K J 1/10W | 1 | |
| | R24 | RK73GB2A103J | CHIP R | 10K J 1/10W | 1 | |
| | R25 | RK73HB1J102J | CHIP R | 1.0K J 1/16W | 1 | |
| | R26 | RK73HB1J104J | CHIP R | 100K J 1/16W | 1 | |
| | R33 | RK73HB1J101J | CHIP R | 100 J 1/16W | 1 | |
| | R35 | RK73HB1J101J | CHIP R | 100 J 1/16W | 1 | |
| | R44 | RK73HB1J220J | CHIP R | 22 J 1/16W | 1 | |
| | R45 | RK73HB1J220J | CHIP R | 22 J 1/16W | 1 | |
| | R111 | RK73GB2A105J | CHIP R | 1.0M J 1/10W | 1 | |
| | R120 | RK73EB2E000J | CHIP R | 0.0 J 1/4W 3216 SIZE | 1 | |
| | R121 | RK73HB1J102J | CHIP R | 1.0K J 1/16W | 1 | |
| | CN3 | E41-3246-05 | FLAT CABLE CONNECTOR | 18PIN | 1 | |
| | CP3 | RK74HB1J101J | CHIP-COM | 100 J 1/16W | 1 | |
| | CP4 | RK74HB1J332J | CHIP-COM | 3.3K J 1/16W | 1 | |
| | CP5 | RK74HB1J102J | CHIP-COM | 1.0K J 1/16W | 1 | |
| | CP6 | RK74HB1J102J | CHIP-COM | 1.0K J 1/16W | 1 | |
| | CP7 | RK74HB1J102J | CHIP-COM | 1.0K J 1/16W | 1 | |
| | CP8 | RK74HB1J223J | CHIP-COM | 22K J 1/16W | 1 | |
| | CP9 | RK74HB1J223J | CHIP-COM | 22K J 1/16W | 1 | |
| | CP10 | RK74HB1J223J | CHIP-COM | 22K J 1/16W | 1 | |
| | CP11 | RK74HB1J102J | CHIP-COM | 1.0K J 1/16W | 1 | |
| | CP12 | RK74HB1J473J | CHIP-COM | 47K J 1/16W | 1 | |
| | J1 | E59-0864-05 | RECTANGULAR PLUG | 24PIN | 1 | |
| | J2 | QNZ1057-001 | USB CONNECTOR | | 1 | |
| | J4 | QNS0308-001 | 3.5 JACK | | 1 | |
| | S1 | S70-0960-05 | TACT SWITCH | 2.5MM/1.76N | 1 | |
| | S2 | S70-0960-05 | TACT SWITCH | 2.5MM/1.76N | 1 | |
| | S3 | S70-0960-05 | TACT SWITCH | 2.5MM/1.76N | 1 | |
| | S4 | S70-0960-05 | TACT SWITCH | 2.5MM/1.76N | 1 | |
| | S5 | S70-0960-05 | TACT SWITCH | 2.5MM/1.76N | 1 | |
| | S6 | S70-0960-05 | TACT SWITCH | 2.5MM/1.76N | 1 | |
| | S7 | S70-0960-05 | TACT SWITCH | 2.5MM/1.76N | 1 | |
| | S8 | S70-0960-05 | TACT SWITCH | 2.5MM/1.76N | 1 | |
| | S9 | S70-0965-05 | TACT SWITCH | 7COMMAND | 1 | |
| | X1 | L78-1409-05 | RESONATOR | 8MHZ | 1 | |

CD PLAYER UNIT (X32-6250-02) IN CD MECHA <X32>

| | | | | | | | |
|----------|------|-------------|------|----------|------|----------|------|
| MODEL | MARK | MODEL | MARK | MODEL | MARK | MODEL | MARK |
| KDC-452U | K2 | KDC-BT852HD | K0 | KDC-X496 | K4 | KDC-X896 | K1 |

| Safe | Symbol No. | Parts No. | Parts Name | Description | QTY | Local |
|------|------------|---------------|-------------|---------------|-----|-------|
| | IC3 | BD8222EFV | ANALOGUE IC | | 1 | |
| | IC4 | JCV8023 | IC | | 1 | |
| | IC5 | XC6415S001P1 | MOS-IC | | 1 | |
| | Q1 | 2SA2188-T1(E) | TRANSISTOR | | 1 | |
| | Q14 | RUE003N02 | FET | | 1 | |
| | D2 | DAP202U | DIODE | | 1 | |
| | D3 | DA204U | DIODE | | 1 | |
| | D4 | DA204U | DIODE | | 1 | |
| | C1 | CK73FB0J106K | CHIP C | 6.3V 10UF K | 1 | |
| | C3 | CC73GCH1H680J | CHIP C | 50V 68PF J | 1 | |
| | C4 | CK73GB1A105K | CHIP C | 10V 1.0UF K | 1 | |
| | C6 | CK73FB1C105K | CHIP C | 16V 1.0UF K | 1 | |
| | C8 | CK73GB1H222K | CHIP C | 50V 2200PF K | 1 | |
| | C9 | CK73GB1C104K | CHIP C | 16V 0.10UF K | 1 | |
| | C10 | CK73GB1C104K | CHIP C | 16V 0.10UF K | 1 | |
| | C11 | CK73GB1H153K | CHIP C | 50V 0.015UF K | 1 | |
| | C12 | CK73GB1C104K | CHIP C | 16V 0.10UF K | 1 | |
| | C13 | CK73GB1H332K | CHIP C | 50V 3300PF K | 1 | |
| | C14 | CK73GB1H103K | CHIP C | 50V 0.010UF K | 1 | |
| | C15 | CK73GB1C333K | CHIP C | 16V 0.033UF K | 1 | |
| | C16 | CK73GB1C104K | CHIP C | 16V 0.10UF K | 1 | |
| | C18 | CK73GB1H153K | CHIP C | 50V 0.015UF K | 1 | |
| | C19 | CK73GB1H103K | CHIP C | 50V 0.010UF K | 1 | |
| | C20 | CK73GB1C104K | CHIP C | 16V 0.10UF K | 1 | |
| | C22 | CK73GB1H103K | CHIP C | 50V 0.010UF K | 1 | |
| | C23 | CK73GB1H153K | CHIP C | 50V 0.015UF K | 1 | |
| | C24 | CC73GCH1H470J | CHIP C | 50V 47PF J | 1 | |
| | C25 | CK73GB1C104K | CHIP C | 16V 0.10UF K | 1 | |
| | C26 | CK73GB1A105K | CHIP C | 10V 1.0UF K | 1 | |
| | C27 | CK73GB1C104K | CHIP C | 16V 0.10UF K | 1 | |
| | C29 | CK73GB1C104K | CHIP C | 16V 0.10UF K | 1 | |
| | C30 | CK73GB1C104K | CHIP C | 16V 0.10UF K | 1 | |
| | C31 | CK73GB1A105K | CHIP C | 10V 1.0UF K | 1 | |
| | C36 | CK73GB1A105K | CHIP C | 10V 1.0UF K | 1 | |
| | C41 | CK73GB1C104K | CHIP C | 16V 0.10UF K | 1 | |
| | C42 | CK73GB1C104K | CHIP C | 16V 0.10UF K | 1 | |
| | C43 | CK73GB1H102K | CHIP C | 50V 1000PF K | 1 | |
| | C44 | CK73GB1H102K | CHIP C | 50V 1000PF K | 1 | |
| | C45 | CK73GB1H103K | CHIP C | 50V 0.010UF K | 1 | |
| | C46 | CK73GB1A105K | CHIP C | 10V 1.0UF K | 1 | |
| | C47 | CC73GCH1H560J | CHIP C | 50V 56PF J | 1 | |
| | C48 | CC73GCH1H101J | CHIP C | 50V 100PF J | 1 | |
| | C49 | CK73GB1A105K | CHIP C | 10V 1.0UF K | 1 | |
| | C50 | CK73FB1A225K | CHIP C | 10V 2.2UF K | 1 | |
| | C51 | CK73FB0J106K | CHIP C | 6.3V 10UF K | 1 | |
| | C54 | CK73FB0J106K | CHIP C | 6.3V 10UF K | 1 | |
| | C57 | CK73GB1C104K | CHIP C | 16V 0.10UF K | 1 | |
| | C59 | CK73GB1H472K | CHIP C | 50V 4700PF K | 1 | |
| | C61 | CK73GB1C104K | CHIP C | 16V 0.10UF K | 1 | |
| | C101 | CK73GB1A105K | CHIP C | 10V 1.0UF K | 1 | |
| | C103 | CK73GB1C104K | CHIP C | 16V 0.10UF K | 1 | |
| | R1 | RK73GB2A560J | CHIP R | 56 J 1/10W | 1 | |
| | R2 | RK73GB2A472J | CHIP R | 4.7K J 1/10W | 1 | |
| | R3 | RK73GB2A4R7J | CHIP R | 4.7 J 1/10W | 1 | |
| | R4 | RK73GB2A104J | CHIP R | 100K J 1/10W | 1 | |
| | R5 | RK73GB2A225J | CHIP R | 2.2M J 1/10W | 1 | |
| | R6 | RK73GB2A102J | CHIP R | 1.0K J 1/10W | 1 | |
| | R7 | RK73GB2A221J | CHIP R | 220 J 1/10W | 1 | |
| | R8 | RK73GB2A622J | CHIP R | 6.2K J 1/10W | 1 | |
| | R9 | RK73GB2A913J | CHIP R | 91K J 1/10W | 1 | |
| | R10 | RK73GB2A334J | CHIP R | 330K J 1/10W | 1 | |
| | R11 | RK73GB2A153J | CHIP R | 15K J 1/10W | 1 | |
| | R13 | RK73GB2A104J | CHIP R | 100K J 1/10W | 1 | |
| | R14 | RK73GB2A103J | CHIP R | 10K J 1/10W | 1 | |
| | R15 | RK73GB2A101J | CHIP R | 100 J 1/10W | 1 | |
| | R17 | RK73GB2A103J | CHIP R | 10K J 1/10W | 1 | |
| | R18 | RK73GB2A103J | CHIP R | 10K J 1/10W | 1 | |
| | R25 | RK73GB2A103J | CHIP R | 10K J 1/10W | 1 | |
| | R27 | RK73EB2E4R7J | CHIP R | 4.7 J 1/4W | 1 | |
| | R39 | RK73GB2A105J | CHIP R | 1.0M J 1/10W | 1 | |
| | R40 | RK73GB2A681J | CHIP R | 680 J 1/10W | 1 | |
| | R43 | RK73GB2A4R7J | CHIP R | 4.7 J 1/10W | 1 | |
| | R44 | RK73GB2A4R7J | CHIP R | 4.7 J 1/10W | 1 | |
| | R49 | RK73GB2A393J | CHIP R | 39K J 1/10W | 1 | |
| | R50 | RK73GB2A363J | CHIP R | 36K J 1/10W | 1 | |
| | R51 | RK73GB2A102J | CHIP R | 1.0K J 1/10W | 1 | |
| | R52 | RK73GB2A101J | CHIP R | 100 J 1/10W | 1 | |
| | R53 | RK73GB2A101J | CHIP R | 100 J 1/10W | 1 | |
| | R54 | RK73GB2A101J | CHIP R | 100 J 1/10W | 1 | |
| | R55 | RK73GB2A101J | CHIP R | 100 J 1/10W | 1 | |
| | R56 | RK73GB2A101J | CHIP R | 100 J 1/10W | 1 | |
| | R57 | RK73GB2A101J | CHIP R | 100 J 1/10W | 1 | |
| | R58 | RK73GB2A101J | CHIP R | 100 J 1/10W | 1 | |
| | R59 | RK73GB2A204J | CHIP R | 200K J 1/10W | 1 | |
| | R64 | RK73GB2A223J | CHIP R | 22K J 1/10W | 1 | |
| | R65 | RK73GB2A333J | CHIP R | 33K J 1/10W | 1 | |
| | R69 | RK73GB2A101J | CHIP R | 100 J 1/10W | 1 | |
| | R70 | RK73GB2A101J | CHIP R | 100 J 1/10W | 1 | |
| | R71 | RK73GB2A101J | CHIP R | 100 J 1/10W | 1 | |
| | R72 | RK73GB2A101J | CHIP R | 100 J 1/10W | 1 | |
| | R73 | RK73GB2A101J | CHIP R | 100 J 1/10W | 1 | |
| | R74 | RK73GB2A103J | CHIP R | 10K J 1/10W | 1 | |
| | R75 | RK73GB2A103J | CHIP R | 10K J 1/10W | 1 | |

| | | | | | | | |
|----------|------|-------------|------|----------|------|----------|------|
| MODEL | MARK | MODEL | MARK | MODEL | MARK | MODEL | MARK |
| KDC-452U | K2 | KDC-BT852HD | K0 | KDC-X496 | K4 | KDC-X896 | K1 |

| Safe | Symbol No. | Parts No. | Parts Name | Description | QTY | Local |
|------|------------|--------------|-------------------------|--------------------|-----|-------|
| R76 | | RK73GB2A202J | CHIP R | 2.0K J 1/10W | 1 | |
| R102 | | RK73GB2A102J | CHIP R | 1.0K J 1/10W | 1 | |
| CN1 | | E41-2954-05 | FLAT CABLE CONNECTOR | 15P/0.5MM/UP/LF/AU | 1 | |
| CN2 | | E41-2630-05 | FLAT CABLE CONNECTOR | 30P/1.00MM/UP/LF | 1 | |
| CP7 | | RK74GB1J103J | CHIP-COM | 10K J 1/16W | 1 | |
| S1 | | S68-0863-05 | PUSH SWITCH | | 1 | |
| S2 | | S68-0863-05 | PUSH SWITCH | | 1 | |
| X1 | | L78-1221-05 | RESONATOR | 16.93MHZ | 1 | |