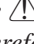



1 2 3 4

9. EXPLODED VIEWS AND PARTS LIST

NOTES :

- Parts marked by " * " are generally unavailable because they are not in our Master Spare Parts List.
- The  mark found on some component parts indicates the importance of the safety factor of the part. Therefore, when replacing, be sure to use parts of identical designation.
- Screw adjacent to  mark on the product are used for disassembly.
- For the applying amount of lubricants or glue, follow the instructions in this manual. (In the case of no amount instructions, apply as you think it appropriate.)

9.1 PACKING SECTION

A: DEH-S4100BT/XNUC
 B: DEH-S4120BT/XNUC
 C: DEH-S410BT/XEVEW5
 D: DEH-S41BT/XEVEW5
 E: DEH-S4150BT/XNGS
 F: DEH-S4150BT/XNCS

30

DEH-S4100BT/XNUC

1 2 3 4

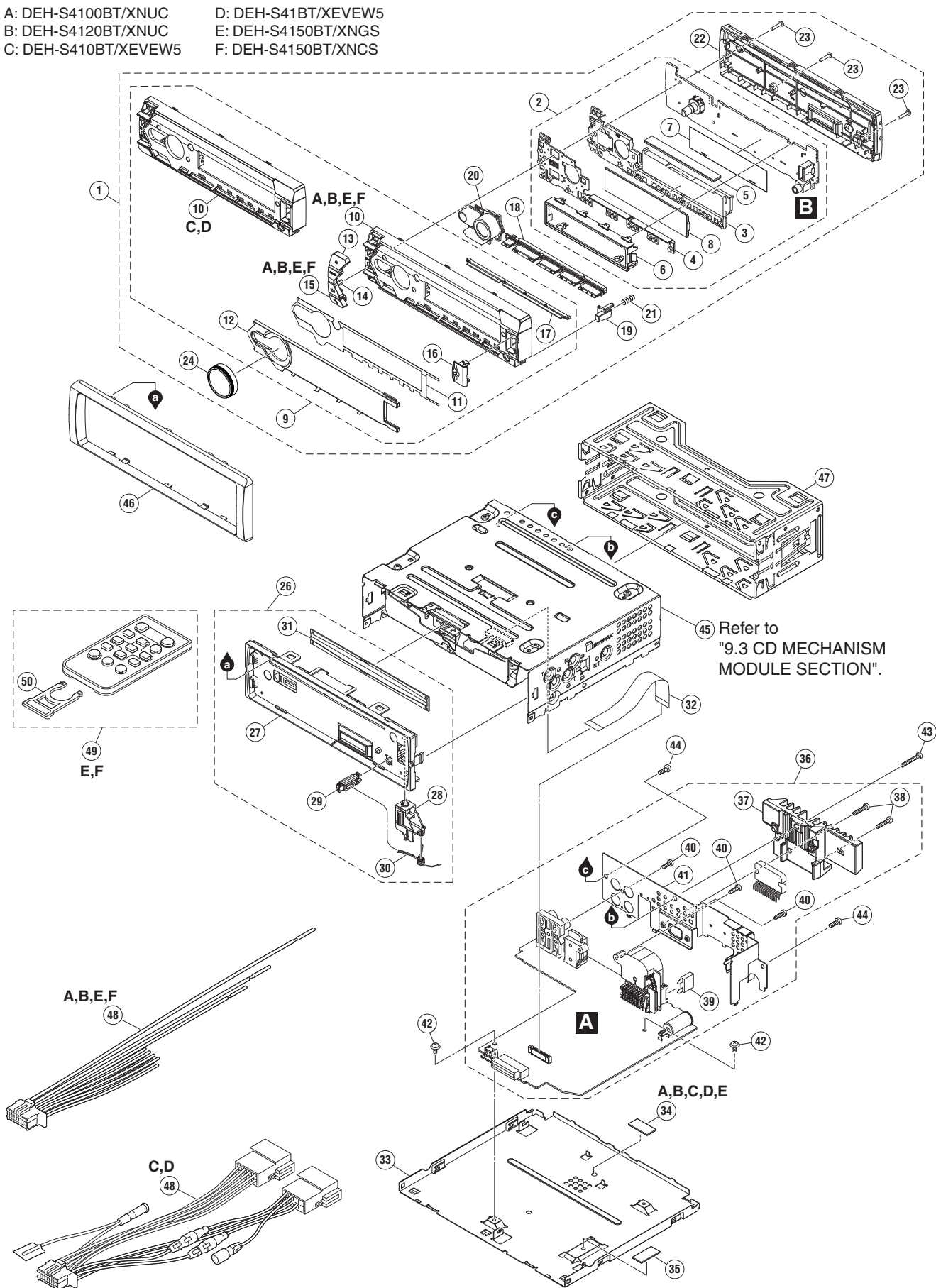
(1) PACKING SECTION PARTS LIST

Mark	No.	Description	DEH-S4100BT/XNUC	DEH-S4120BT/XNUC	DEH-S410BT/XEVEW5
	1	Unit Box	QHG4350	QHG4351	QHG4348
	2	Contain Box	QHL4350	QHL4351	QHL4348
	3	Protector	QHP3048	QHP3048	QHP3048
	4	Polyethylene Bag	CEG1173	CEG1173	QEG3001
	5-1	Owner's Manual	Not used	Not used	QRB3773
	5-2	Quick Start Guide	QRD3581	QRD3581	QRD3579
	5-3	Quick Start Guide	Not used	Not used	QRD3580
	5-4	Web IM	See Contents of Web IM(2)	See Contents of Web IM(2)	See Contents of Web IM(2)
*	5-5	Warranty Card	QRY3001	QRY3001	CRY1376
	6	Cord Assy	CDP1480	CDP1480	QDP3071
	7	Card Remote Control Unit	Not used	Not used	Not used
	8	Accessory Assy	QEA3337	QEA3337	Not used
*	9	Polyethylene Bag	CEG1160	CEG1160	Not used
	10	Handle	QNC3021	QNC3021	QNC3021
	11	Screw	CBA2384	CBA2384	Not used
	12	Screw	CBA2383	CBA2383	Not used
	13	Screw	BPZ20P060FTC	BPZ20P060FTC	Not used
	14	Microphone Assy	CPM1109	CPM1109	CPM1109
	15	Holder	CZN7192	CZN7192	CZN7192
	16	Cushion	CZN7193	CZN7193	CZN7193
	17	Case Assy	Not used	Not used	Not used

Mark	No.	Description	DEH-S41BT/XEVEW5	DEH-S4150BT/XNGS	DEH-S4150BT/XNCS
	1	Unit Box	QHG4349	QHG4352	QHG4353
	2	Contain Box	QHL4349	QHL4352	QHL4353
	3	Protector	QHP3048	QHP3048	QHP3048
	4	Polyethylene Bag	QEG3001	QEG3001	QEG3001
	5-1	Owner's Manual	QRB3773	QRD3587	Not used
	5-2	Quick Start Guide	QRD3579	Not used	QRD3588
	5-3	Quick Start Guide	QRD3580	Not used	Not used
	5-4	Web IM	See Contents of Web IM(2)	See Contents of Web IM(2)	See Contents of Web IM(2)
*	5-5	Warranty Card	CRY1376	Not used	Not used
	6	Cord Assy	QDP3071	CDP1480	CDP1480
	7	Card Remote Control Unit	Not used	CXE9605	CXE9605
	8	Accessory Assy	Not used	QEA3338	QEA3338
*	9	Polyethylene Bag	Not used	CEG1160	CEG1160
	10	Handle	QNC3021	QNC3021	QNC3021
	11	Screw	Not used	CBA2384	CBA2384
	12	Screw	Not used	Not used	Not used
	13	Screw	Not used	Not used	Not used
	14	Microphone Assy	CPM1109	CPM1109	CPM1109
	15	Holder	CZN7192	CZN7192	CZN7192
	16	Cushion	CZN7193	CZN7193	CZN7193
	17	Case Assy	Not used	QXA3129	QXA3129

9.2 EXTERIOR SECTION

- A: DEH-S4100BT/XNUC D: DEH-S41BT/XEVEW5
- B: DEH-S4120BT/XNUC E: DEH-S4150BT/XNGS
- C: DEH-S410BT/XEVEW5 F: DEH-S4150BT/XNCS



(1) EXTERIOR SECTION PARTS LIST

	<u>Mark No.</u>	<u>Description</u>	<u>Part No.</u>		<u>Mark No.</u>	<u>Description</u>	<u>Part No.</u>	
A	1	Detach Grille Assy	See Contrast table (2)		26	Panel Assy	See Contrast table (2)	
	2	Keyboard Unit	See Contrast table (2)		27	Panel	QNS4071	
	3	Lighting Conductor	QNV3153		28	Arm	QNV3025	
	4	Contact Rubber	QNV3155		29	Button	QNV3026	
	5	Rubber Connector	QNV3129		30	Spring	QBH3001	
B	6	Holder	QNC3173		31	Cover	QNM3029	
	7	Sheet	QNM3256		32	FFC	QDE3029	
	8	Segment LCD (V1801)	CAW2065		33	Case	QNB3055	
	9	Grille Unit	See Contrast table (2)		34	Heat Cond Sheet	See Contrast table (2)	
	*	10	Grille	See Contrast table (2)		35	Heat Cond Sheet	QNM3223
	*	11	DS Tape	See Contrast table (2)		36	Tuner Amp Unit	See Contrast table (2)
	*	12	Plate	See Contrast table (2)		37	Heat Sink	See Contrast table (2)
	*	13	Button(EJECT)	QAC3311		38	Screw	BSZ26P120FTC
	*	14	Button(SOURCE,BACK)	QAC3312	⚠	39	Fuse (10 A)	CEK1415
	*	15	Button	See Contrast table (2)		40	Screw	BPZ26P080FTC
C	*	16	Door	QAT3037		41	Holder	QNC3165
	*	17	Lighting Conductor	QNV3157		42	Screw	ASZ26P050FTC
		18	Button(DISP,TRACK,1-6)	QAC3319		43	Screw	BSZ26P120FTC
		19	Button(DETACH)	QAC3320		44	Screw	BSZ26P060FTC
		20	Button	See Contrast table (2)		45	CD Mechanism Module(11.6VA_T07)	See Contrast table (2)
		21	Spring	CBH2210			CD Mechanism Module(S11.6_T07)	See Contrast table (2)
		22	Cover	QNS4296			CD Mechanism Module(S11.6 VIETNAM)	See Contrast table (2)
		23	Screw	BPZ20P100FTC		46	Panel	QNS4341
		24	Knob Unit	See Contrast table (2)		47	Holder	QNC3020
		25	•••••			48	Cord Assy	See Contrast table (2)
D					49	Card Remote Control Unit	See Contrast table (2)	
					50	Cover	See Contrast table (2)	

Notes: For No.45, please refer to "1.4 NOTES ON REPLACING PARTS" for part distinguish.

(2) CONTRAST TABLE

DEH-S4100BT/XNUC, DEH-S4120BT/XNUC, DEH-S410BT/XEVEW5, DEH-S41BT/XEVEW5, DEH-S4150BT/XNGS and DEH-S4150BT/XNCS are constructed the same except for the following:

Mark	No.	Description	DEH-S4100BT/XNUC	DEH-S4120BT/XNUC	DEH-S410BT/XEVEW5
	1	Detach Grille Assy	QXA5783	QXA5784	QXA5781
	2	Keyboard Unit	QWM4987	QWM4987	QWM4986
	9	Grille Unit	QXA5433	QXA5434	QXA5431
*	10	Grille	QNS4294	QNS4294	QNS4342
*	11	DS Tape	QNM3231	QNM3231	QNM3253
*	12	Plate	QNS4295	QNS4295	QNS4344
*	15	Button (PHONE)	QAC3313	QAC3313	Not used
	20	Button	QAC3314 (LIST/NAVI,BASS)	QAC3314 (LIST/NAVI,BASS)	QAC3315 (LIST/NAVI,PHONE)
	24	Knob Unit	QXA5430	QXA5430	QXA5430
	26	Panel Assy	QXA4716	QXA4716	QXA5294(Panel Unit)
	34	Heat Cond Sheet	QNM3130	QNM3130	QNM3130
	36	Tuner Amp Unit	QWM4924	QWM4925	QWM4922
	37	Heat Sink	QNR3010	QNR3010	QNR3010
	45	CD Mechanism Module(11.6VA_T07)	CXK5808	CXK5808	Not used
		CD Mechanism Module(S11.6_T07)	CXK5807	CXK5807	Not used
		CD Mechanism Module(S11.6 VIETNAM)	Not used	Not used	CXK5835
	48	Cord Assy	CDP1480	CDP1480	QDP3071
	49	Card Remote Control Unit	Not used	Not used	Not used
	50	Cover	Not used	Not used	Not used

Mark	No.	Description	DEH-S41BT/XEVEW5	DEH-S4150BT/XNGS	DEH-S4150BT/XNCS
	1	Detach Grille Assy	QXA5782	QXA5785	QXA5786
	2	Keyboard Unit	QWM5076	QWM4987	QWM5083
	9	Grille Unit	QXA5432	QXA5435	QXA5435
*	10	Grille	QNS4383	QNS4294	QNS4294
*	11	DS Tape	QNM3253	QNM3231	QNM3231
*	12	Plate	QNS4345	QNS4295	QNS4295
*	15	Button(PHONE)	Not used	QAC3313	QAC3313
	20	Button	QAC3315 (LIST/NAVI,PHONE)	QAC3314 (LIST/NAVI,BASS)	QAC3314 (LIST/NAVI,BASS)
	24	Knob Unit	QXA5423	QXA5430	QXA5430
	26	Panel Assy	QXA5294(Panel Unit)	QXA4716	QXA4716
	34	Heat Cond Sheet	QNM3130	Not used	QNM3130
	36	Tuner Amp Unit	QWM4923	QWM4927	QWM4926
	37	Heat Sink	QNR3010	QNR3002	QNR3010
	45	CD Mechanism Module(11.6VA_T07)	Not used	CXK5808	CXK5808
		CD Mechanism Module(S11.6_T07)	Not used	CXK5807	CXK5807
		CD Mechanism Module(S11.6 VIETNAM)	CXK5835	Not used	Not used
	48	Cord Assy	QDP3071	CDP1480	CDP1480
	49	Card Remote Control Unit	Not used	CXE9605	CXE9605
	50	Cover	Not used	CNU3681	CNU3681

9.3 CD MECHANISM MODULE

A

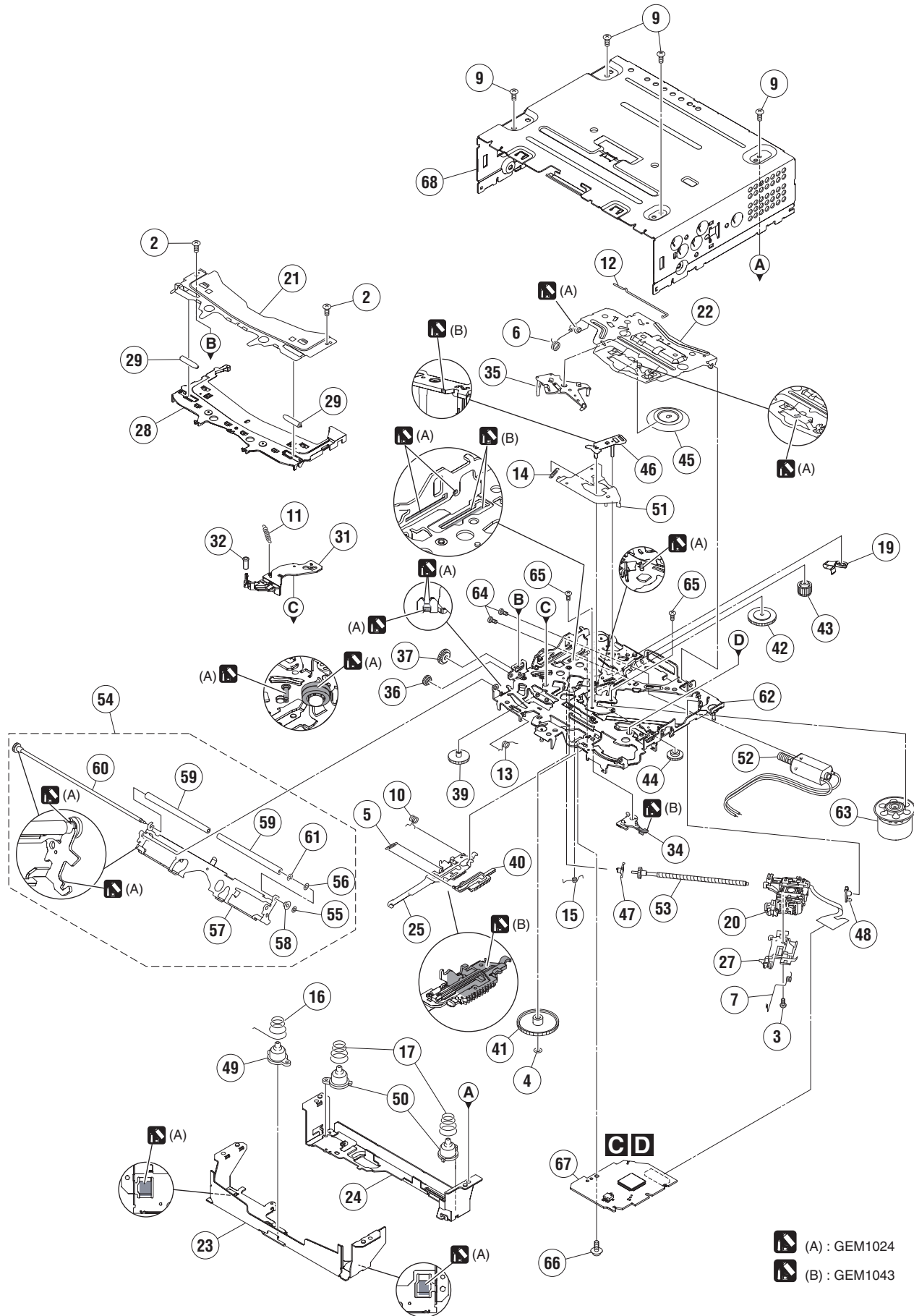
B

C

D

E

F



(A) : GEM1024
 (B) : GEM1043

(1) CD MECHANISM MODULE SECTION PARTS LIST

<u>Mark No.</u>	<u>Description</u>	<u>Part No.</u>	<u>Mark No.</u>	<u>Description</u>	<u>Part No.</u>
1	•••••		36	Gear	CNW1180
2	Screw	BSZ20P040FTC	37	Gear	CNW1181
3	Screw(M2 x 4)	CBA1835	38	•••••	
4	Washer	CBF1038	39	Gear	CNW1183
5	Spring	CBH3010	40	Rack	CNW1184
6	Spring	CBH2855	41	Gear	CNW1185
7	Spring	CBH2856	42	Gear	CNW1186
8	•••••		43	Gear	CNW1187
9	Screw	BSZ26P060FTC	44	Gear	CNW2287
10	Spring	CBH3011	45	Clamper	CNW1190
11	Coil Spring	See Contrast table (2)	46	Arm	CNW1192
12	Spring	CBH3014	47	Holder	CNW1193
13	Spring	CBH3145	48	Holder	CNW1194
14	Spring	See Contrast table (2)	49	Damper	CNW1197
15	Spring	CBH3017	50	Damper	CNW1198
16	Spring	CBH3086	51	Arm	CNW1726
17	Spring	CBH3019	52	Motor Unit(M2)(LOAD/CRG)	CXC4026
18	•••••		53	Screw Unit	CXC8894
19	Leaf Spring	CBL1824	54	Arm Assy	CXE8953
20	Pickup Unit(Service)	See Contrast table (2)	55	Washer	CBF1037
21	Bracket	CND4553	56	Washer	CBF1038
22	Arm	CND7608	57	Arm	CND6242
23	Bracket	CND6127	58	Collar	CNW2444
24	Bracket	CND5710	59	Roller	CNW2500
25	Lever	CND6834	60	Gear Unit	CXE8952
26	•••••		61	Washer	YE15FTC
27	Rack	CNV8342	62	Chassis Unit	CXE9531
28	Guide	CNW3489	63	Motor Unit(M1)(SPDL)	See Contrast table (2)
29	Roller	CNW1172	64	Screw	JFZ20P025FTC
30	•••••		65	Screw	JGZ17P022FTC
31	Arm	CNW2241	66	Screw	EBA1028
32	Roller	CNW1175	67	CD Core Unit	See Contrast table (2)
33	•••••		68	Chassis	CNA3373
34	Arm	CNW1177			
35	Arm	CNW1178			

Notes: For No.11, 14, 20, 63 and 67. please refer to "1.4 NOTES ON REPLACING PARTS" for part distinguish.

(2) CONTRAST TABLE

DEH-S4100BT/XNUC, DEH-S4120BT/XNUC, DEH-S410BT/XEVEW5, DEH-S41BT/XEVEW5, DEH-S4150BT/XNGS and DEH-S4150BT/XNCS are constructed the same except for the following:

A

Mark	No.	Symbol and Description	DEH-S4100BT/XNUC DEH-S4100BT/XNUC DEH-S4150BT/XNGS DEH-S4150BT/XNCS	DEH-S410BT/XEVEW5 DEH-S41BT/XEVEW5
	11	Coil Spring for CXK5808	CBH3095	Not used
	11	Coil Spring for CXK5807	CBH3095	Not used
	11	Coil Spring for CXK5835	Not used	CBH3149
	14	Spring for CXK5808	CBH3016	Not used
	14	Spring for CXK5807	CBH3016	Not used
	14	Spring for CXK5835	Not used	CBH3148
	20	Pickup Unit(P11)(Service) for CXK5808	CXX4754	Not used
	20	Pickup Unit(P10.6)(Service) for CXK5807	CXX3556	Not used
B	20	Pickup Unit(P10.6)(Service) for CXK5835	Not used	CXX3556
	63	Motor Unit(M1)(SPDL) for CXK5808	CXE2273	Not used
	63	Motor Unit(M1)(SPDL) for CXK5807	CXE2273	Not used
	63	Motor Unit(M1)(SPDL) for CXK5835	Not used	CXE3767
	67	CD Core Unit(S11.6VA) for CXK5808	CWX4269	Not used
	67	CD Core Unit(S11.6STD) for CXK5807	CWX4023	Not used
	67	CD Core Unit(S11.6STD) for CXK5835	Not used	CWX4023

C

D

E

F

Circuit Symbol and No.**Part No.****Circuit Symbol and No.****Part No.**

X 501	Resonator 24 MHz	CSS1773
X 502	Resonator 32.768 kHz	CSS1807
X 851	Crystal Resonator 55.46667 MHz	CSS1898
S 501	Switch(RESET)	CSG1020
P 852	Surge Absorber	IMSA-6803-01Y900
P 1243	Poly Switch	FSMD075-24R
P 1276	Poly Switch	FSMD075-24R
VA1101	SMD Varistor	MLV0402ES012V0010N
VA1201	Varistors	MLV0402ES012V0010N
VA1202	SMD Varistor	MLV0402ES012V0010N
U 1001	BT Module	CWX4751

CN1101	Connector(A,B,E,F)	VKN1192
CN1101	Connector(C,D)	CKS6763
CN1201	Connector	CKS6452
JA 101	Plug	CKM1624
JA851	Antenna Jack	CKX1104

JA 1241	Jack	CKB1109
JA 1276	Jack	CKN1103

RESISTORS

R 111		XRS1/16SS223J
R 112		XRS1/16SS473J
R 113	(A,B,E,F)	XRS1/16SS682J
R 113	(C,D)	XRS1/16SS333J
R 114	(A,B,E,F)	RS1/4SA102J

R 114	(C,D)	RS1/4SA122J
R 141		XRS1/16SS104J
R 142		XRS1/16SS473J
R 143		XRS1/16SS103J
R 144		XRS1/16SS472J

R 145		XRS1/16SS0R0J
R 165		XRS1/10SR0R0J
R 201		XRS1/16SS102J
R 202		XRS1/16SS3303D
R 203		XRS1/10SR0R0J

R 204		XRS1/10SR0R0J
R 206		XRS1/16SS472J
R 207		XRS1/16SS103J
R 208		XRS1/16SS473J
R 209		XRS1/10SR472J

R 210		XRS1/16SS103J
R 211		XRS1/10SR472J
R 212		XRS1/16SS103J
R 213		XRS1/16SS132J
R 214		XRS1/16SS102J

R 215		XRS1/16SS2403D
R 216		XRS1/16SS7502D
R 217		XRS1/16SS4303D
R 218		XRS1/16SS4303D
R 219		XRS1/16SS273J

R 220		XRS1/16SS474J
R 221		XRS1/16SS473J
R 222		XRS1/16SS6802D
R 223	0.02 ohm	CCN1401
R 224		XRS1/16SS6802D

R 225		XRS1/16SS102J
R 226		XRS1/16SS1203D
R 227		XRS1/16SS1802D
R 229		XRS1/16SS3902D

D 141	Zener Diode	UDZV7R5(B)
D 201	Schottky Diode	RB162MM-40TF
D 202	Rectifier Diode	RR1VWM4STF
D 203	Schottky Diode	RB056LAM-40TF
D 204	Rectifier Diode	RR1VWM4STF
D 206	Schottky Diode	CMS30I30A
D 207	Schottky Diode	RB751SM-40
D 208	Schottky Diode	RB751SM-40
D 210	Schottky Diode	RB162MM-40TF
D 301	Zener Diode	UDZV10(B)
D 461	Schottky Diode(B)	RB551VM-30
D 501	Schottky Diode(A,B,C,E)	RB751SM-40
D 502	Schottky Diode(A,B,C,E)	RB751SM-40
D 1001	Zener Diode	SZESD7351HG
D 1101	Zener Diode	UDZV18(B)
D 1201	Zener Diode	RSB6R8SM
D 1204	Zener Diode	UDZV18(B)
D 1205	Zener Diode	UDZV18(B)
D 1206	Zener Diode	RSB6R8SM
D 1207	Zener Diode	RSB6R8SM
D 1208	Zener Diode	RSB6R8SM
D 1209	Zener Diode	RSB6R8SM
D 1210	Zener Diode	RSB6R8SM
D 1301	Rectifier Diode(E)	RR1VWM4STF
D 1302	Schottky Diode	RR1VWM4STF
D 1303	Schottky Diode	RB751SM-40
L 101	Choke Coil 120 uH	CTH1620
L 201	SMD SPL Inductor	CTH1521
L 202	SMD SPL Inductor	CTH1584
L 203	Chip Beads	VTL1133
L 441	Inductor	CTF1736
L 461	SMD SPL Inductor(B)	CTH1674
L 501	Chip Beads	VTL1133
L 502	Inductor	CTF1645
L 504	Chip Beads	VTL1133
L 505	Chip Beads	VTL1133
L 511	Chip Beads	VTL1133
L 513	Chip Beads	VTL1133
L 514	Chip Beads	VTL1126
L 517	Chip Beads	VTL1133
L 518	Chip Beads	VTL1133
L 519	Chip Beads	VTL1133
L 520	Chip Beads	VTL1133
L 711	Chip Beads	VTL1133
L 854	Inductor	LCMAR27J1608
L 855	Inductor	CTF1786
L 856	Inductor(A,B,C,D,F)	CTF1787
L 857	SMD SPL Inductor(E)	LCYAR82J2016
L 858	Chip Coil(E)	LCTAWR27J2520
L 859	Chip Coil(E)	LCTAW3R3J2520
L 860	Inductor(A,B,C,D,F)	LCYC150K1608
L 863	Inductor	LCMAR22J1608
L 1001	Chip Ferrite Bead	DTL1107
L 1101	Inductor	CTF1787
L 1102	Chip Beads	VTL1133
L 1103	Chip Beads	VTL1133
L 1104	Chip Beads	VTL1133
L 1201	Noise Filter	CTF1901
L 1401	Ferrite Bead(C,D,E,F)	CTF1528

<u>Circuit Symbol and No.</u>	<u>Part No.</u>	<u>Circuit Symbol and No.</u>	<u>Part No.</u>
R 230	XRS1/16SS682J	R 539 (E,F)	XRS1/16SS103J
		R 540	XRS1/16SS103J
R 231	XRS1/16SS4703D		
R 232	XRS1/16SS1503D	R 541	XRS1/16SS103J
R 233	XRS1/16SS1003D	R 544	XRS1/16SS102J
R 234	XRS1/16SS7503D	R 545	XRS1/16SS473J
R 235	XRS1/16SS1603D	R 546	XRS1/16SS273J
		R 547	XRS1/16SS473J
R 236	XRS1/16SS103J		
R 238	XRS1/16SS822J	R 548	XRS1/16SS102J
R 239	XRS1/16SS101J	R 550	XRS1/16SS103J
R 240	XRS1/16SS101J	R 551	XRS1/16SS103J
R 241	XRS1/16SS680J	R 552	XRS1/16SS102J
		R 554	XRS1/16SS222J
R 242	XRS1/16SS4701D		
R 243	XRS1/16SS393J	R 555	XRS1/16SS135J
R 244	XRS1/16SS103J	R 556	XRS1/16SS101J
R 246	XRS1/10SR0R0J	R 557	XRS1/16SS101J
R 248	XRS1/16SS473J	R 558	XRS1/16SS222J
		R 559	XRS1/16SS222J
R 250	XRS1/10SR471J		
R 263	XRS1/10SR103J	R 561	XRS1/16SS103J
R 269	XRS1/16SS101J	R 562	XRS1/16SS472J
R 302	XRS1/16SS473J	R 563	XRS1/16SS472J
R 305	XRS1/10SR102J	R 564	XRS1/16SS472J
		R 566	RAB4CQ103J
R 441	XRS1/16SS103J		
R 442	XRS1/10SR221J	R 567	XRS1/16SS472J
R 461 (B)	XRS1/10SR0R0J	R 568	XRS1/16SS0R0J
R 463 (B)	XRS1/16SS2202D	R 570	XRS1/16SS221J
R 464 (B)	XRS1/16SS4701D	R 571	XRS1/16SS221J
		R 572	XRS1/16SS472J
R 465 (B)	XRS1/16SS4303D		
R 466 (B)	XRS1/10SR102J	R 573	XRS1/16SS473J
R 501 (B)	XRS1/16SS222J	R 574	XRS1/16SS473J
R 503	XRS1/16SS3R3J	R 575	XRS1/16SS473J
R 504	XRS1/16SS3R3J	R 577	XRS1/16SS182J
		R 578	XRS1/16SS473J
R 505	XRS1/16SS221J		
R 506	XRS1/16SS473J	R 579	XRS1/16SS473J
R 507	XRS1/16SS473J	R 580	XRS1/16SS473J
R 508	XRS1/16SS473J	R 581	XRS1/16SS0R0J
R 509	XRS1/16SS473J	R 583	XRS1/16SS0R0J
		R 584	XRS1/16SS102J
R 510	XRS1/16SS473J		
R 511	XRS1/16SS473J	R 585	XRS1/16SS0R0J
R 512	XRS1/16SS102J	R 586	XRS1/16SS103J
R 513	XRS1/16SS222J	R 587	XRS1/16SS102J
R 515	XRS1/16SS103J	R 588	XRS1/16SS221J
		R 589	XRS1/16SS0R0J
R 517	XRS1/16SS103J		
R 518	XRS1/16SS472J	R 590	XRS1/16SS221J
R 519	XRS1/16SS271J	R 591	XRS1/16SS361J
R 521	XRS1/16SS473J	R 593	XRS1/16SS0R0J
R 522	XRS1/16SS0R0J	R 594	XRS1/16SS0R0J
		R 596	XRS1/16SS0R0J
R 524	XRS1/16SS3001D		
R 525	XRS1/16SS103J	R 597	XRS1/16SS102J
R 526	XRS1/16SS1213F	R 598	XRS1/16SS102J
R 531	XRS1/16SS222J	R 599	XRS1/16SS102J
R 532	XRS1/16SS222J	R 603	XRS1/16SS101J
		R 604	XRS1/16SS101J
R 533	XRS1/10SR103J		
R 534	XRS1/10SR103J	R 605	XRS1/16SS101J
R 536 (A,B,E)	XRS1/16SS472J	R 611	XRS1/16SS472J
R 537 (C,D,F)	XRS1/16SS473J	R 614	XRS1/16SS473J
R 538 (A,C)	XRS1/16SS472J	R 615	XRS1/16SS103J
		R 617	XRS1/16SS473J
R 538 (D)	XRS1/16SS103J		
R 538 (E,F)	XRS1/16SS473J	R 627	XRS1/16SS153J
R 539 (B,D)	XRS1/16SS473J	R 628	XRS1/16SS153J

	<u>Circuit Symbol and No.</u>	<u>Part No.</u>	<u>Circuit Symbol and No.</u>	<u>Part No.</u>
	R 629	XRS1/16SS472J	R 741	XRS1/16SS330J
	R 630	XRS1/16SS101J	R 742	XRS1/16SS103J
A	R 631	XRS1/16SS0R0J	R 743	XRS1/16SS103J
			R 744	XRS1/16SS330J
	R 632	XRS1/16SS101J		
	R 633	XRS1/16SS101J	R 745	XRS1/16SS330J
	R 634	XRS1/16SS101J	R 746	XRS1/16SS103J
	R 635	XRS1/16SS101J	R 747	XRS1/16SS330J
	R 636	XRS1/16SS101J	R 748	XRS1/16SS330J
			R 749	XRS1/16SS330J
	R 637	XRS1/16SS221J		
	R 638	XRS1/16SS221J	R 750	XRS1/16SS103J
	R 639	XRS1/16SS101J	R 751	XRS1/16SS103J
	R 640	XRS1/16SS101J	R 753	XRS1/16SS103J
	R 642	XRS1/16SS221J	R 754	XRS1/16SS330J
			R 755	XRS1/16SS0R0J
B	R 643	XRS1/16SS101J		
	R 644	XRS1/16SS473J	R 756	XRS1/16SS0R0J
	R 645	XRS1/16SS101J	R 757	XRS1/16SS0R0J
	R 646	XRS1/16SS101J	R 761	XRS1/10SR221J
	R 647	XRS1/16SS102J	R 762 (B)	XRS1/16SS0R0J
			R 763	XRS1/16SS101J
	R 648	XRS1/16SS102J		
	R 650	XRS1/16SS101J	R 764	XRS1/16SS101J
	R 652	XRS1/16SS101J	R 765 (B)	XRS1/16SS222J
	R 653	XRS1/16SS0R0J	R 766 (A,C,D,E,F)	XRS1/16SS0R0J
	R 657	XRS1/16SS101J	R 767	XRS1/16SS104J
			R 768	XRS1/16SS181J
C	R 658	XRS1/16SS101J		
	R 659	XRS1/16SS101J	R 851	XRS1/16SS105J
	R 660	XRS1/16SS101J	R 852	XRS1/16SS105J
	R 661	XRS1/16SS101J	R 853 (A,B,C,D,F)	XRS1/16SS391J
	R 663	XRS1/16SS101J	R 853 (E)	XRS1/16SS101J
			R 857 (F)	XRS1/16SS0R0J
	R 664	XRS1/16SS101J		
	R 672	XRS1/16SS101J	R 863	XRS1/16SS103J
	R 690	XRS1/16SS472J	R 868	XRS1/16SS103J
	R 701	XRS1/16SS103J	R 870	XRS1/16SS101J
	R 702	XRS1/16SS472J	R 871	XRS1/16SS0R0J
			R 872	XRS1/16SS0R0J
	R 703	XRS1/16SS101J		
D	R 704	XRS1/16SS101J	R 873	XRS1/16SS182J
	R 705	XRS1/16SS222J	R 874	XRS1/16SS101J
	R 706	XRS1/16SS222J	R 875	XRS1/16SS472J
	R 707	XRS1/16SS472J	R 890	XRS1/16SS0R0J
			R 1001	XRS1/16SS0R0J
	R 708	XRS1/16SS272J		
	R 709	XRS1/16SS473J	R 1002	XRS1/16SS221J
	R 710	XRS1/16SS0R0J	R 1004	XRS1/16SS473J
	R 714	RAB4CQ121J	R 1005	XRS1/16SS221J
	R 715	RAB4CQ121J	R 1006	XRS1/16SS0R0J
			R 1007	XRS1/16SS0R0J
	R 716	RAB4CQ121J		
	R 717	RAB4CQ121J	R 1011	XRS1/16SS221J
E	R 718	RAB4CQ121J	R 1012	XRS1/16SS221J
	R 719	RAB4CQ121J	R 1013	XRS1/16SS0R0J
	R 720	RAB4CQ121J	R 1017	XRS1/16SS473J
			R 1018	XRS1/16SS473J
	R 721	RAB4CQ121J		
	R 722	RAB4CQ121J	R 1101	XRS1/16SS104J
	R 723	XRS1/10SR0R0J	R 1104	XRS1/16SS472J
	R 724	XRS1/16SS121J	R 1105	XRS1/16SS221J
	R 731	XRS1/16SS330J	R 1106	XRS1/16SS221J
			R 1107	XRS1/16SS101J
	R 732	XRS1/16SS330J		
	R 733	XRS1/16SS103J	R 1108	XRS1/16SS221J
	R 734	XRS1/16SS103J	R 1109	XRS1/16SS101J
F	R 735	XRS1/16SS103J	R 1110	XRS1/16SS102J
	R 736	XRS1/16SS330J	R 1112	XRS1/16SS221J
			R 1114	XRS1/16SS473J
	R 737	XRS1/16SS330J		

<u>Circuit Symbol and No.</u>	<u>Part No.</u>	<u>Circuit Symbol and No.</u>	<u>Part No.</u>
R 1115	XRS1/16SS472J	R 1323 (A,C,D,E,F)	XRS1/16SS0R0J
R 1116	XRS1/16SS472J	R 1323 (B)	XRS1/16SS432J
R 1117	XRS1/16SS472J	R 1324 (A,C,D,E,F)	XRS1/16SS0R0J
R 1119	XRS1/16SS473J	R 1324 (B)	XRS1/16SS432J
R 1120	XRS1/16SS151J	R 1325 (B)	XRS1/16SS272J
R 1121	XRS1/16SS151J	R 1326 (B)	XRS1/16SS272J
R 1122	XRS1/16SS151J	R 1327 (B)	XRS1/16SS272J
R 1201	XRS1/10SR222J	R 1328 (B)	XRS1/16SS272J
R 1203	XRS1/16SS223J	R 1401 (C,D,E,F)	XRS1/16SS221J
R 1204	XRS1/16SS223J	R 1402 (C,D,E,F)	XRS1/16SS102J
R 1205	XRS1/10SR222J	R 1403 (C,D,E,F)	XRS1/16SS103J
R 1206	XRS1/10SR221J	R 1407 (C,D,E,F)	XRS1/16SS272J
R 1207	XRS1/10SR221J	R 1408 (C,D,E,F)	XRS1/16SS332J
R 1208	XRS1/10SR0R0J	R 1409 (C,D,E,F)	XRS1/16SS333J
R 1209	XRS1/10SR222J	R 1410 (C,D,E,F)	XRS1/16SS163J
R 1210	XRS1/10SR222J	R 1411 (C,D,E,F)	XRS1/16SS824J
R 1211	XRS1/10SR222J	R 1412 (C,D,E,F)	XRS1/16SS563J
R 1212	XRS1/10SR222J	R 1413 (C,D,E,F)	XRS1/16SS0R0J
R 1213	XRS1/16SS123J	R 1414 (C,D,E,F)	XRS1/16SS0R0J
R 1214	XRS1/10SR222J	R 1415 (C,D,E,F)	XRS1/16SS273J
R 1215	XRS1/10SR101J	R 1416	XRS1/10SR0R0J
R 1220	XRS1/16SS0R0J	R 1421 (A,B)	XRS1/16SS0R0J
R 1221	XRS1/16SS0R0J	R 1422 (A,B)	XRS1/16SS0R0J
R 1222	XRS1/16SS0R0J	R 1428 (C,D)	XRS1/16SS0R0J
R 1223	XRS1/16SS0R0J	R 1431	XRS1/10SR0R0J
R 1243	XRS1/16SS821J	CAPACITORS	
R 1244	XRS1/16SS821J	C 101 2 200 uF/16V	CCH1659
R 1245	XRS1/16SS821J	C 102	CKSRYB103K50
R 1246	XRS1/16SS821J	C 103	CKSSYB102K50
R 1247	XRS1/16SS223J	C 104	CKSSYB102K50
R 1248	XRS1/16SS223J	C 105	CKSSYB102K50
R 1249	XRS1/16SS223J	C 106	CKSSYB102K50
R 1250	XRS1/16SS223J	C 107	CKSSYB102K50
R 1254	XRS1/16SS0R0J	C 108	CKSSYB102K50
R 1256	XRS1/16SS0R0J	C 109	CKSSYB102K50
R 1256	XRS1/16SS0R0J	C 110	CKSSYB102K50
R 1276 (E,F)	XRS1/16SS8201D	C 111	CKSRYX104K50
R 1277 (E,F)	XRS1/16SS6800D	C 201	CKSSYB681K50
R 1278 (A,B,C,D)	XRS1/16SS102J	C 202	CEVW221M16
R 1278 (E,F)	XRS1/16SS1001D	C 203	CKSRYX106M6R3
R 1279 (E,F)	XRS1/16SS6800D	C 204	CEVQW221M6R3
R 1280 (A,B,C,D)	XRS1/16SS102J	C 205	CKSRYX105K50
R 1280 (E,F)	XRS1/16SS1001D	C 206	CKSYX106K35
R 1281	XRS1/16SS101J	C 207	CKSSYB104K10
R 1282	XRS1/16SS101J	C 208	CCSSCH471J50
R 1283 (E,F)	XRS1/16SS8201D	C 209	CKSSYB681K50
R 1301	XRS1/16SS123J	C 210 2 200 uF/16V	CCH1659
R 1302	XRS1/16SS103J	C 211	CKSQYX106K10
R 1303	XRS1/16SS221J	C 212	CEAT102M16
R 1306	XRS1/16SS103J	C 213	CKSSYB222K50
R 1307	XRS1/16SS0R0J	C 214	CKSRYX106M6R3
R 1308 (A,B,C,D,F)	RS1/8SQ0R0J	C 215	CKSSYB104K16
R 1309 (A,B,C,D,F)	RS1/8SQ0R0J	C 216	CKSSYX104K50
R 1310 (E)	RS1/8SQ0R0J	C 218	CKSYX106K35
R 1311 (E)	RS1/8SQ0R0J	C 220	CKSYX106K35
R 1312	XRS1/16SS103J	C 221	CKSYX106K35
R 1313	XRS1/16SS102J	C 222	CEVW221M16
R 1321 (A,C,D,E,F)	XRS1/16SS0R0J	C 223	CCSSCH221J50
R 1321 (B)	XRS1/16SS432J		
R 1322 (A,C,D,E,F)	XRS1/16SS0R0J		
R 1322 (B)	XRS1/16SS432J		

Circuit Symbol and No.Part No.Circuit Symbol and No.Part No.

	C 224	CKSRYX105K16	C 519	CCSSCH100D50
	C 225	CKSRYX105K16	C 520	CKSRYX475K6R3
A	C 227	CCSSCH221J50	C 521	CKSSYB104K10
			C 522	CKSRYX475K6R3
	C 228	CKSSYB102K50		
	C 230	CKSQYX106K10	C 523	CKSRYX475K6R3
	C 231	CKSSYB104K16	C 524	CKSRYX475K6R3
	C 232	CEHVW101M6R3	C 525	CKSRYX106M6R3
	C 234	CKSRYX475K6R3	C 526	CKSSYB103K16
			C 527	CKSRYX106M6R3
	C 236	CKSYX106K35		
	C 237	CKSSYB104K16	C 528	CKSSYB103K16
	C 238	CKSYX226M16	C 529	CKSSYB104K10
	C 239	CCSSCH100D50	C 530	CKSRYX475K6R3
	C 240	CCSSCH100D50	C 531	CKSSYX105K10
			C 532	CKSSYX105K10
B	C 241	CKSQYX106K10		
	C 242	CKSSYB104K16	C 533	CKSRYX475K6R3
	C 243	CKSYX106K35	C 534	CKSSYB104K10
	C 244	CKSSYB102K50	C 535	CEVW221M10
	C 245	CKSYX106K35	C 536	CCSSCH101J50
			C 537	CKSSYB103K16
	C 246	CKSRYX104K50		
	C 247	CKSSYX105K10	C 538	CKSRYX106M6R3
	C 248	CKSRYX105K50	C 539	CKSSYB103K16
	C 249	CCSSCH820J50	C 540	CKSRYX106M6R3
	C 250	CKSRYX225K10	C 541	CKSSYB222K50
			C 542	CKSSYB104K10
C	C 251	CKSSYX105K10		
	C 252	CKSRYX475K6R3	C 543	CKSSYX105K10
	C 253	CKSRYX105K50	C 544	CKSSYB473K16
	C 255	CKSSYX105K6R3	C 545	CCSSCH100D50
	C 257	CKSYX106K35	C 546	CCSSCH120J50
			C 551	CKSSYB104K10
	C 259	CKSQYX106K10		
	C 260	CKSQYX106K10	C 552	CKSRYX475K6R3
	C 261	CKSSYB104K10	C 553	CKSRYX106M6R3
	C 267	CKSSYB104K16	C 555	CKSSYB103K16
	C 270	CKSRYX475K6R3	C 556	CKSSYB104K10
			C 559	CKSQYB224K50
	C 301	CKSSYB104K16		
D	C 302	CKSSYB104K16	C 560	CKSSYB103K16
	C 441	CCSSCH101J50	C 565	CCSSCH270J50
	C 442	CKSRYX106M6R3	C 566	CCSSCH330J50
	C 443	CCSSCH101J50	C 575	CKSSYB104K10
			C 576	CKSSYB102K50
	C 444	CKSRYX106M6R3		
	C 461 (B)	CKSYX106K35	C 580	CKSRYX104K50
	C 462 (B)	CKSYX106K35	C 588	CKSSYB104K10
	C 463 (B)	CKSQYX106K16	C 590	CKSSYB472K25
	C 464 (B)	CKSSYB221K50	C 591	CKSSYB472K25
			C 592	CKSSYB472K25
	C 502	CKSSYB104K10		
E	C 503	CKSRYX475K6R3	C 593	CKSSYB472K25
	C 505	CKSSYB104K10	C 595	CKSSYB472K25
	C 506	CKSRYX475K6R3	C 701	CKSSYB104K10
	C 507	CKSRYX475K6R3	C 702	CKSSYB104K10
			C 712	CKSSYX105K10
	C 508	CKSSYB104K10		
	C 509	CKSRYX475K6R3	C 713	CKSSYB104K10
	C 510	CKSSYB104K10	C 714	CKSSYX105K10
	C 511	CKSRYX475K6R3	C 715	CKSSYX105K10
	C 512	CKSSYB104K10	C 716	CKSSYX105K10
			C 717	CKSRYX475K6R3
	C 513	CKSRYX475K6R3		
	C 514	CKSSYB104K10	C 718	CKSSYX105K10
	C 515	CKSSYX105K10	C 719	CKSSYB104K10
F	C 516	CKSRYX225K16	C 721	CKSSYX105K16
	C 517	CKSSYB104K10	C 722	CKSSYB104K10
			C 723	CKSSYB102K50
	C 518	CCSSCH100D50		

<u>Circuit Symbol and No.</u>	<u>Part No.</u>	<u>Circuit Symbol and No.</u>	<u>Part No.</u>
C 729	CKSQYX106K10	C 1109	CKSSYB102K50
C 731	CKSSYB104K10	C 1201	CCG1345
C 741	CKSRX225K10	C 1202	CKSSYX104K50
C 742	CKSSYB104K10	C 1203	CKSRX104K50
C 743	CKSSYB104K10	C 1204	CKSRX105K16
C 761	CKSRX105K16	C 1205	CCSRCH221J50
C 762	CKSRX105K16	C 1206	CCSRCH221J50
C 763	CKSRX105K16	C 1210	CKSRX105K16
C 767 (C,D,E,F)	CKSRX105K16	C 1212	CCSSCH470J50
C 768 (C,D,E,F)	CKSRX105K16	C 1217	CCSSCH121J50
C 769	CKSRX105K16	C 1221	CKSYX106K35
C 770	CKSRX105K16	C 1243	CKSQYX106K10
C 771	CKSRX105K16	C 1244	CKSQYX106K10
C 772	CKSRX105K16	C 1245	CKSQYX106K10
C 773	CKSRX105K16	C 1246	CKSQYX106K10
C 774	CCSSCH151J50	C 1247	CKSSYB102K50
C 775	CCSSCH151J50	C 1248	CKSSYB102K50
C 776	CKSSYX104K50	C 1249	CKSSYB102K50
C 777	CKSYX106K35	C 1250	CKSSYB102K50
C 778 (C,D,E,F)	CKSRX105K16	C 1253	CKSSYB103K16
C 779	CKSQYX106K10	C 1254	CKSSYB104K10
C 780	CKSSYB104K16	C 1255	CKSSYB331K50
C 781	CKSRX105K16	C 1256	CKSSYX105K10
C 782	CKSRX105K16	C 1276	CKSSYB104K16
C 783	CKSRX105K16	C 1277	CKSSYB104K16
C 784	CKSRX105K16	C 1278	CKSSYB104K16
C 785	CKSRX105K16	C 1279	CKSSYB104K16
C 787	CKSQYX106K16	C 1280	CKSSYB102K50
C 788	CKSQYX106K16	C 1281	CKSSYB102K50
C 790	CKSRX106M6R3	C 1301	CKSQYB474K25
C 791	CKSSYB103K25	C 1302	CKSQYB474K25
C 794	CCSSCH101J50	C 1303	CKSQYB474K25
C 853	CCSSCH120J50	C 1304	CKSQYB474K25
C 854	CCSSCH471J50	C 1305	CKSSYB104K10
C 856	CKSSYX104K50	C 1306	CKSRX104K10
C 857	CKSSYX104K50	C 1308	CKSRX104K50
C 858	CCSSCH5R0C50	C 1310	CKSQYX106K16
C 859	CCSSCH120J50	C 1311	CKSRX225K10
C 860 (E)	CCSSCK2R0C50	C 1312	CKSRX104K50
C 861 (E)	CCSSCK1R0C50	C 1317	CKSRX104K50
C 862 (E)	CCSSCK1R0C50	C 1318	CKSRX104K50
C 863 (E)	CCSSCH120J50	C 1321	CKSRX106M6R3
C 865	CKSRX225K10	C 1401 (C,D,E,F)	CKSSYB104K10
C 866	CKSSYB224K6R3	C 1403 (C,D,E,F)	CKSRX106M6R3
C 867	CKSSYB102K50	C 1404 (C,D,E,F)	CKSSYB104K10
C 870	CKSSYB102K50	C 1405 (C,D,E,F)	CKSSYX105K10
C 872	CKSSYB104K10	C 1406 (C,D,E,F)	CKSSYB104K10
C 874	CCSSCH180J50	C 1407 (C,D,E,F)	CKSSYB182K50
C 875	CKSSYB104K10	C 1408 (C,D,E,F)	CKSRX105K25
C 878	CKSSYB152K50	C 1409 (C,D,E,F)	CKSSYX105K10
C 882	CKSSYX105K10	C 1410 (C,D,E,F)	CCSSCH6R0D50
C 884 (A,C,D,E,F)	CKSSYB104K16	C 1411 (C,D,E,F)	CKSSYB102K50
C 885 (A,B,C,D,F)	CKSRX103K50	C 1412 (C,D,E,F)	CKSSYB104K10
C 890	CKSRX106M6R3	C 1421 (C,D,E,F)	CKSRX105K16
C 891	CKSRX225K10	C 1422 (C,D,E,F)	CKSRX105K16
C 1003	CKSSYB104K16	C 1424	CKSRX105K16
C 1004	CKSSYB104K16		CKSRX474K10
C 1101	CKSSYB103K16		
C 1105	CKSSYX105K10		
C 1106	CKSSYX105K10		

Circuit Symbol and No.Part No.Circuit Symbol and No.Part No.**B****Unit Number: QWM4987(A,B,E)****Unit Number: QWM4986(C)****Unit Number: QWM5076(D)****Unit Number: QWM5083(F)****Unit Name : Keyboard Unit****MISCELLANEOUS**

IC 1801	Driver IC	BU97540KV-M
IC 1851	IR RC REC Module(A,B,E,F)	SIR8440B5
Q 1953	Transistor	2SAR502UB
Q 1954	Transistor	LTC143EUB
D 1801	Zener Diode	RSB6R8SM
D 1802	Zener Diode	RSB6R8SM
D 1901	Zener Diode	SZESD7351HG
D 1902	Zener Diode	SZESD7351HG
D 1921	Zener Diode(F)	RSB6R8SM
D 1922	Zener Diode(F)	RSB6R8SM
D 1923	Zener Diode(F)	RSB6R8SM
D 1951	White LED	SWBA05(FI231719)
D 1952	LED(A,B,E,F)	FC-F1608BAK5
D 1953	LED(A,B,E,F)	FC-F1608BAK5
D 1954	LED(A,B,E,F)	FC-F1608BAK5
D 1955	LED(A,B,E,F)	FC-F1608BAK5
D 1956	LED(A,B,E,F)	FC-F1608BAK5
D 1957	LED(A,B,E,F)	FC-F1608BAK5
D 1958	LED(A,B,E,F)	FC-F1608BAK5
D 1959	LED(A,B,E,F)	FC-F1608BAK5
D 1960	LED(A,B,E,F)	FC-F1608BAK5
D 1961	LED(A,B,E,F)	FC-F1608BAK5
D 1962	LED(A,B,E,F)	FC-F1608BAK5
D 1963	LED(A,B,E,F)	FC-F1608BAK5
D 1964	LED(A,B,E,F)	FC-F1608BAK5
D 1965	LED(A,B,E,F)	FC-F1608BAK5
D 1966	LED(A,B,E,F)	FC-F1608BAK5
D 1967	LED(A,B,E,F)	FC-F1608BAK5
D 1968	LED(A,B,E,F)	FC-F1608BAK5
D 1969	LED(C)	FC-1608SXX630D08
D 1969	LED(D)	SML-D12D8W(RS)
D 1970	LED(C)	FC-1608SXX630D08
D 1970	LED(D)	SML-D12D8W(RS)
D 1971	LED(C)	FC-1608SXX630D08
D 1971	LED(D)	SML-D12D8W(RS)
D 1972	LED(C)	FC-1608SXX630D08
D 1972	LED(D)	SML-D12D8W(RS)
D 1973	LED(C)	FC-1608SXX630D08
D 1973	LED(D)	SML-D12D8W(RS)
D 1974	LED(C)	FC-1608SXX630D08
D 1974	LED(D)	SML-D12D8W(RS)
D 1975	LED(C)	FC-1608SXX630D08
D 1975	LED(D)	SML-D12D8W(RS)
D 1976	LED(C)	FC-1608SXX630D08
D 1976	LED(D)	SML-D12D8W(RS)
D 1977	LED(C)	FC-1608SXX630D08
D 1977	LED(D)	SML-D12D8W(RS)
D 1978	LED(C)	FC-1608SXX630D08
D 1978	LED(D)	SML-D12D8W(RS)
D 1979	LED(C)	FC-1608SXX630D08

D 1979	LED(D)	SML-D12D8W(RS)
D 1980	LED(C)	FC-1608SXX630D08
D 1980	LED(D)	SML-D12D8W(RS)
D 1981	LED(C)	FC-1608SXX630D08
D 1981	LED(D)	SML-D12D8W(RS)
D 1982	LED(C)	FC-1608SXX630D08
D 1982	LED(D)	SML-D12D8W(RS)
D 1983	LED(C)	FC-1608SXX630D08
D 1983	LED(D)	SML-D12D8W(RS)
D 1984	LED(C)	FC-1608SXX630D08
D 1984	LED(D)	SML-D12D8W(RS)
D 1985	LED(C)	FC-1608SXX630D08
D 1985	LED(D)	SML-D12D8W(RS)
S 1839	Rotary Encoder(MULTI-CONTROL)	CSD1212
CN1941	Connector	CKS6451
JA 1901	Connector	CKS6443
JA 1921	Jack	CKN1090
V 1801	Segment LCD	CAW2065

RESISTORS

R 1802		XRS1/10SR472J
R 1821		XRS1/10SR273J
R 1851	(C,D)	XRS1/10SR473J
R 1854	(A,B,E,F)	XRS1/10SR101J
R 1921	(A,B,C,D,E)	XRS1/10SR0R0J
R 1921	(F)	XRS1/10SR221J
R 1922	(A,B,C,D,E)	XRS1/10SR0R0J
R 1922	(F)	XRS1/10SR221J
R 1923		XRS1/10SR0R0J
R 1941		XRS1/10SR222J
R 1942		XRS1/10SR222J
R 1943		XRS1/10SR222J
R 1944		XRS1/10SR222J
R 1956	(A,B,E,F)	XRS1/10SR392J
R 1958	(A,B,E,F)	XRS1/10SR561J
R 1960	(A,B,E,F)	XRS1/10SR331J
R 1962	(A,B,E,F)	XRS1/10SR471J
R 1964	(A,B,E,F)	XRS1/10SR392J
R 1966	(A,B,E,F)	XRS1/10SR392J
R 1968	(A,B,E,F)	XRS1/10SR392J
R 1970	(A,B,E,F)	XRS1/10SR332J
R 1972	(A,B,E,F)	XRS1/10SR332J
R 1974	(C)	XRS1/10SR102J
R 1974	(D)	XRS1/10SR122J
R 1976	(C)	XRS1/10SR152J
R 1976	(D)	XRS1/10SR182J
R 1977	(C,D)	RS1/4SA561J
R 1980	(C)	XRS1/10SR102J
R 1980	(D)	XRS1/10SR681J
R 1982	(C)	XRS1/10SR122J
R 1982	(D)	XRS1/10SR222J
R 1984	(C)	XRS1/10SR821J
R 1984	(D)	XRS1/10SR122J
R 1986	(C)	XXRS1/10SR821J
R 1986	(D)	XRS1/10SR122J
R 1988	(C)	XRS1/10SR681J
R 1988	(D)	XRS1/10SR122J
R 1990	(C)	XRS1/10SR681J
R 1990	(D)	XRS1/10SR122J

<u>Circuit Symbol and No.</u>	<u>Part No.</u>	<u>Circuit Symbol and No.</u>	<u>Part No.</u>
R 1991 (A,B,E,F)	XRS1/10SR0R0J	R 305	RS1/16SS102J
R 1996 (C,D)	XRS1/10SR0R0J	R 306	RS1/16SS472J
R 1998	XRS1/10SR272J	R 307	RS1/16SS102J
R 1999	XRS1/10SR103J	R 308	RS1/16SS472J
R 2001	XRS1/10SR0R0J	R 309	RS1/16SS473J
R 2002	RS1/8SQ181J	R 310	RS1/16SS472J
R 2003	RS1/8SQ181J	R 311	RS1/16SS472J
		R 312	RS1/16SS472J
		R 313	RS1/16SS472J
		R 701	RS1/16SS101J
		R 702	RS1/16SS101J

CAPACITORS

C 1801	CKSRYX105K16
C 1802	CKSRYB104K25
C 1851 (A,B,E,F)	CKSQYX106K10
C 1901	CCSRCH471J50
C 1902	CKSRYX475K6R3

C 1905	CKSRYX105K16
C 1923 1 000 pF(A,B,C,D,E)	CCG1345
C 1923 (F)	CKSRYB224K16

C

Unit Number: CWX4269(A,B,E,F)
Unit Name : CD Core Unit (11.6VA)

MISCELLANEOUS

IC 201 Mask UC IC	PEQ094A
IC 301 Driver IC	BD8223EFV
Q 101 Transistor	2SAR502UB
Q 102 Chip Digital Transistor	LTA123JUB
X 201 Ceramic Resonator 16.934 MHz	CSS1603

S 901 Lever Switch(HOME)	CSN1090
S 903 Spring Switch(DSCSNS)	CSN1081
CN101 Connector	CKS4808
CN701 Connector	CKS6146

RESISTORS

R 101	RS1/10SR2R4J
R 102	RS1/10SR2R4J
R 103	RS1/10SR2R7J
R 108	RS1/16SS105J
R 109	RS1/16SS152J

R 214	RS1/16SS103J
R 215	RS1/16SS393J
R 216	RS1/16SS102J
R 217	RS1/16SS562J
R 218	RS1/16SS472J

R 229	RS1/16SS471J
R 232	RS1/16SS0R0J
R 237	RS1/16SS221J
R 240	RS1/16SS473J
R 245	RS1/16SS104J

R 254	RS1/16SS104J
R 260	RS1/16SS103J
R 264	RS1/16SS102J
R 281	RS1/16SS560J
R 282	RS1/16SS560J

R 291	RS1/16SS560J
R 294	RS1/16SS471J
R 303	RS1/16SS123J
R 304	RS1/16SS123J

CAPACITORS

C 104	CKSQYB475K6R3
C 110	CKSSYB104K10
C 111	CKSSYB103K16
C 203	CKSSYB104K10
C 205	CKSRYB105K10

C 209	CKSRYB104K16
C 210	CKSSYB104K10
C 211	CKSSYB104K10
C 212	CKSSYB104K10
C 213	CKSSYB332K50

C 214	CKSSYB473K16
C 215	CKSSYB104K10
C 216	CKSSYB152K50
C 217	CCSSCH390J50
C 218	CCSSCH5R0C50

C 219	CKSSYB104K10
C 220	CKSSYB104K10
C 221	CKSSYB104K10
C 222	CKSSYB104K10
C 223	CCSSCH680J50

C 224	CCSSCH470J50
C 225	CKSSYB103K16
C 228	CCSSCH180J50
C 229	CKSSYB104K10
C 233	CKSSYB103K16

C 236	CKSSYB104K10
C 238	CKSRYB104K16
C 299	CKSSYB104K10
C 302	CKSSYB102K50
C 303	CKSSYB102K50

C 304	CKSSYB223K16
C 305	CKSSYB104K10
C 306	CKSSYB104K10
C 307	CKSRYB105K10
C 308	CKSRYB105K10

C 710	CKSSYB102K50
-------	--------------

D

Unit Number: CWX4023
Unit Name : CD Core Unit(S11.6STD)

MISCELLANEOUS

IC 201 Mask UC IC	PE5791A
-------------------	---------

Circuit Symbol and No.**Part No.****Circuit Symbol and No.****Part No.**

IC 301	Driver IC	BD8223EFV	C 217	CCSSCH560J50
Q 101	Transistor(A,B,E,F)	2SAR502UB	C 218	CCSSCH4R0C50
Q 101	Transistor(C,D)	2SA1577	C 219	CKSSYB104K10
Q 102	Chip Digital Transistor	LTA123JUB	C 220	CKSSYB104K10
			C 221	CKSSYB104K10
X 201	Ceramic Resonator 16.934 MHz	CSS1603		
S 901	Lever Switch(HOME)	CSN1090	C 222	CKSSYB104K10
S 903	Spring Switch(DSCSNS)	CSN1081	C 223	CCSSCH680J50
CN101	Connector	CKS4808	C 224	CCSSCH470J50
CN701	Connector	CKS6146	C 225	CKSSYB103K16
			C 228	CCSSCH270J50

RESISTORS

R 101	RS1/10SR2R4J	C 229	CKSSYB104K10
R 102	RS1/10SR2R4J	C 233	CKSSYB103K16
R 103	RS1/10SR2R7J	C 236	CKSSYB104K10
R 108	RS1/16SS105J	C 238	CKSRYB104K16
R 109	RS1/16SS222J	C 299	CKSSYB104K10
R 214	RS1/16SS103J	C 302	CKSSYB102K50
R 215	RS1/16SS393J	C 303	CKSSYB102K50
R 216	RS1/16SS122J	C 304	CKSSYB223K16
R 217	RS1/16SS562J	C 305	CKSSYB104K10
R 218	RS1/16SS472J	C 306	CKSSYB104K10
R 229	RS1/16SS471J	C 307	CKSRYB105K10
R 232	RS1/16SS0R0J	C 308	CKSRYB105K10
R 237	RS1/16SS221J	C 710	CKSSYB102K50
R 240	RS1/16SS473J		
R 245	RS1/16SS104J		
R 254	RS1/16SS104J		
R 260	RS1/16SS103J		
R 264	RS1/16SS102J		
R 281	RS1/16SS560J		
R 282	RS1/16SS560J		
R 291	RS1/16SS560J		
R 294	RS1/16SS471J		
R 303	RS1/16SS123J		
R 304	RS1/16SS123J		
R 305	RS1/16SS102J		
R 306	RS1/16SS472J		
R 307	RS1/16SS102J		
R 308	RS1/16SS472J		
R 309	RS1/16SS473J		
R 310	RS1/16SS472J		
R 311	RS1/16SS472J		
R 312	RS1/16SS472J		
R 313	RS1/16SS472J		
R 701	RS1/16SS101J		
R 702	RS1/16SS101J		
R 706	RS1/16SS221J		

CAPACITORS

C 104	CKSQYB475K6R3
C 203	CKSSYB104K10
C 209	CKSRYB104K16
C 210	CKSSYB104K10
C 211	CKSSYB104K10
C 212	CKSSYB104K10
C 213	CKSSYB332K50
C 214	CKSSYB473K16
C 215	CKSSYB104K10
C 216	CKSSYB182K50