



9. EXPLODED VIEWS AND PARTS LIST

NOTES : • Parts marked by " * " are generally unavailable because they are not in our Master Spare Parts List.

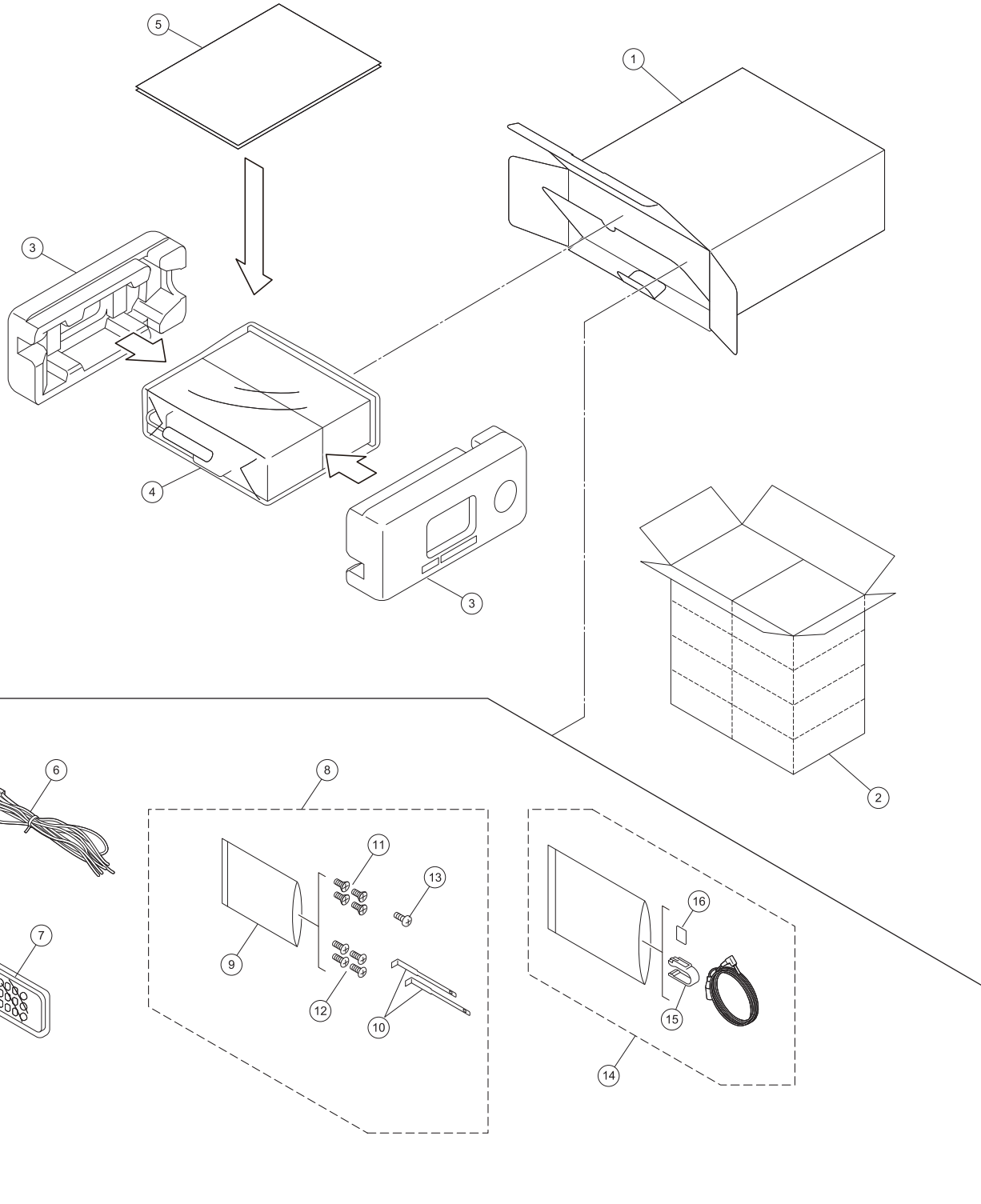
• The  mark found on some component parts indicates the importance of the safety factor of the part. Therefore, when replacing, be sure to use parts of identical designation.

• Screw adjacent to  mark on the product are used for disassembly.

• For the applying amount of lubricants or glue, follow the instructions in this manual.

(In the case of no amount instructions, apply as you think it appropriate.)

9.1 PACKING SECTION



(1) PACKING SECTION PARTS LIST

<u>Mark No.</u>	<u>Description</u>	<u>Part No.</u>	<u>Mark No.</u>	<u>Description</u>	<u>Part No.</u>
1	Unit Box	See Contrast tabel (2)	* 9	Polyethylene Bag	CEG1160
2	Contain Box	See Contrast tabel (2)	10	Handle	QNC3021
3	Protector	CHP4594	11	Screw	CBA2383
4	Polyethylene Bag	CEG1173	12	Screw	CBA2384
5-1	Quick Start Guide	QRD3532	13	Screw	BPZ20P060FTC
* 5-2	Web IM	See Contents of Web IM (3)	14	Microphone Assy	CPM1109
* 5-3	Warranty Card	QRY3001	15	Holder	CZN7192
6	Cord Assy	CDP1484	16	Cushion	CZN7193
7	Card Remote Control Unit	CXE9605			
8	Accessory Assy	QEA3337			

(2) CONTRAST TABLE

DEH-S6000BS/XNUC and DEH-S6010BS/XNUC are constructed the same except for the following:

Mark	No.	Symbol and Description	DEH-S6000BS/XNUC	DEH-S6010BS/XNUC
	1	Unit Box	QHG4142	QHG4145
	2	Contain Box	QHL4142	QHL4145

Owner's Manual, Installation Manual

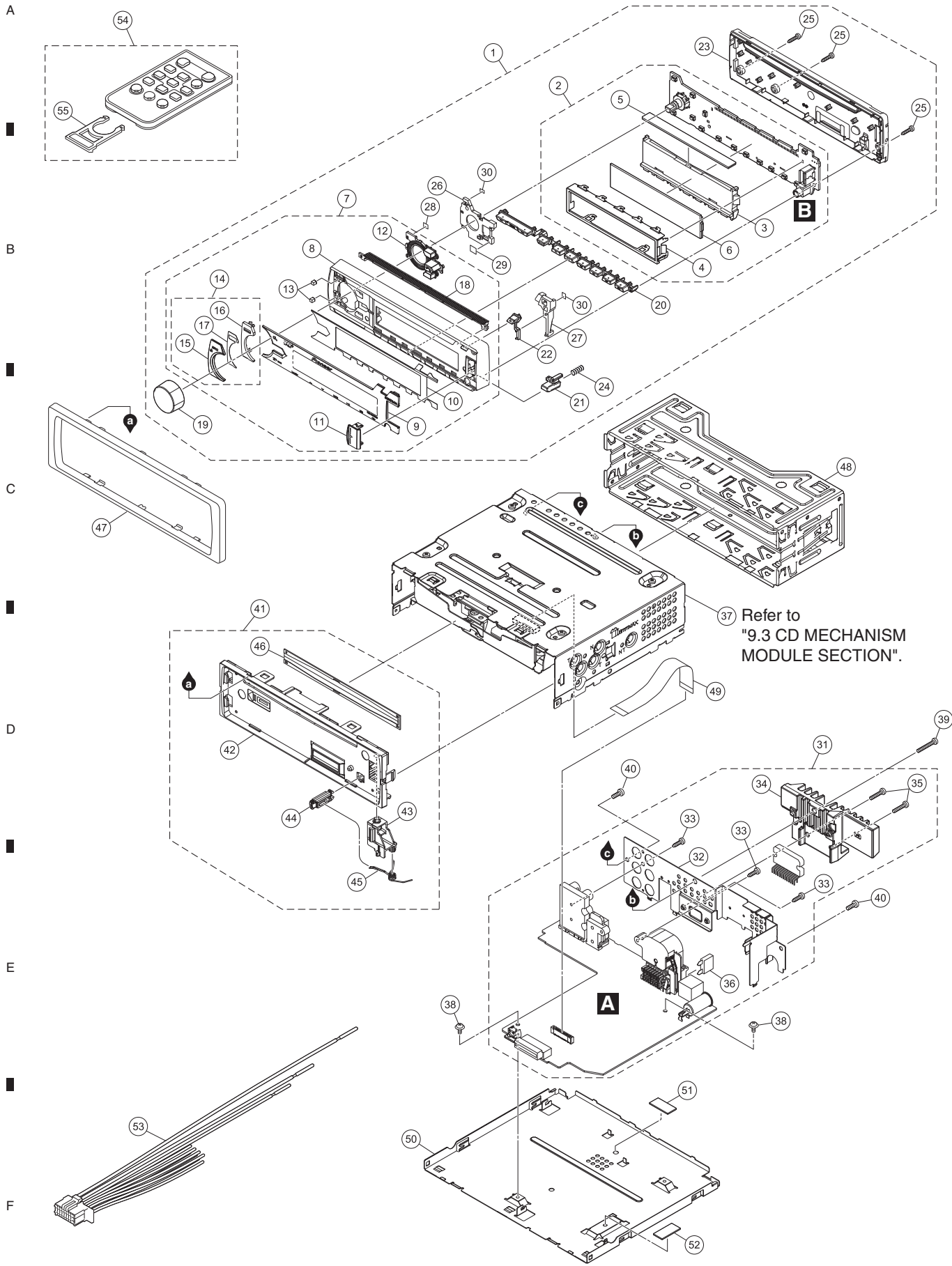
Part No.	Language
QRD3532	English, French, Spanish(Espanol)

(3) CONTENTS OF WEB IM

Part No.	Language
*QRI3026	English, French, Spanish (Espanol)

All operation manuals are supplied in PDF files by the WEB. No printed papers are available.

9.2 EXTERIOR SECTION



(1) EXTERIOR SECTION PARTS LIST

<u>Mark No.</u>	<u>Description</u>	<u>Part No.</u>	<u>Mark No.</u>	<u>Description</u>	<u>Part No.</u>
1	Detach Grille Assy	See Contrast tabel (2)	31	Tuner Amp Unit	See Contrast tabel (2)
2	Keyboard Unit	QWM4636	32	Holder	QNC3112
3	Lighting Conductor	QNV3120	33	Screw	BPZ26P080FTC
4	Holder	QNC3120	34	Heat Sink	QNR3010
5	Rubber Connector	QNV3126	35	Screw	BSZ26P120FTC
6	Segment LCD(V1801)	CAW2057	△ 36	Fuse (10 A)	YEK5001
7	Grille Unit	See Contrast tabel (2)	37	CD Mechanism Module(11.6VA_T07)	CXK5808
*	8	Grille		CD Mechanism Module(S11.6_T07)	CXK5807
*	9	Plate	38	Screw	ASZ26P050FTC
*	10	DS Tape	39	Screw	BSZ26P120FTC
*	11	Door	40	Screw	BSZ26P060FTC
*	12	Button (PHONE)	41	Panel Assy	QXA4716
*	13	Cushion	42	Panel	QNS4071
*	14	Button Unit (SRC)	43	Arm	QNV3025
*	15	Plate	44	Button	QNV3026
*	16	Holder	45	Spring	QBH3001
*	17	DS Tape	46	Cover	QNM3029
*	18	Lighting Conductor	47	Panel	QNS3576
	19	Knob Unit	48	Holder	QNC3020
	20	Button (TRACK, 1-6)	49	FFC	QDE3029
	21	Button (DETACH)	50	Case	QNB3055
	22	Button (EJECT)	51	Heat Cond Sheet	QNM3130
	23	Cover	52	Heat Cond Sheet	QNM3223
	24	Spring	53	Cord Assy	CDP1484
	25	Screw	54	Card Remote Control Unit	CXE9605
	26	Lighting Conductor	55	Cover	CNU3681
	27	Lighting Conductor			
	28	Sheet			
	29	Sheet			
	30	Sheet			

Notes: For No.37, please refer to "1.4 NOTES ON REPLACING PARTS" for part distinguish.

(2) CONTRAST TABLE

DEH-S6000BS/XNUC and DEH-S6010BS/XNUC are constructed the same except for the following:

Mark	No.	Symbol and Description	DEH-S6000BS/XNUC	DEH-S6010BS/XNUC
	1	Detach Grille Assy	QXA5248	QXA5253
	7	Grille Unit	QXA5242	QXA5247
	31	Tuner Amp Unit	QWM4581	QWM4682

9.3 CD MECHANISM MODULE

A

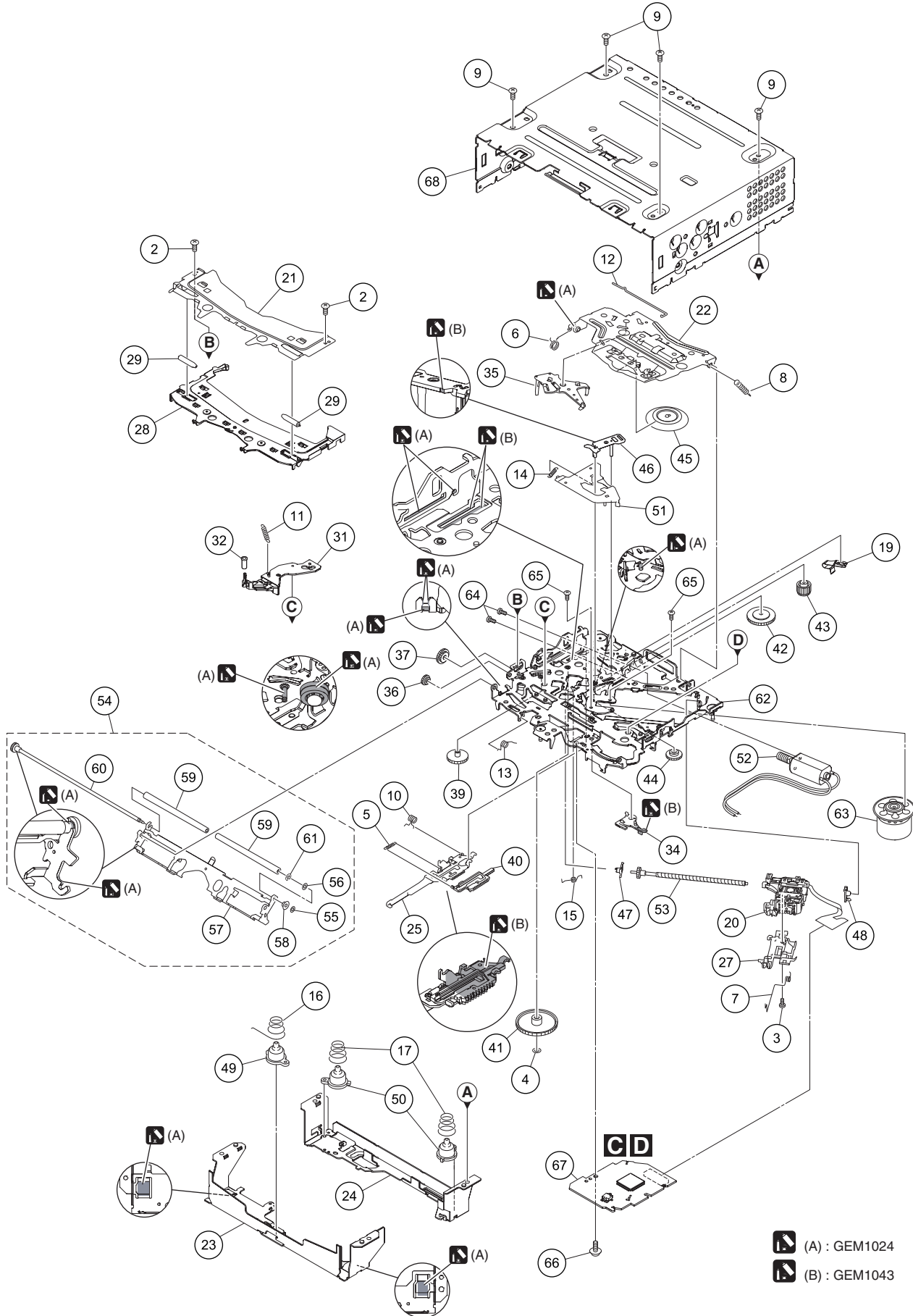
B



C

D

E

F



-  (A) : GEM1024
-  (B) : GEM1043

CD MECHANISM MODULE SECTION PARTS LIST

<u>Mark No.</u>	<u>Description</u>	<u>Part No.</u>	<u>Mark No.</u>	<u>Description</u>	<u>Part No.</u>
1	•••••		36	Gear	CNW1180
2	Screw	BSZ20P040FTC	37	Gear	CNW1181
3	Screw(M2 x 4)	CBA1835	38	•••••	
4	Washer	CBF1038	39	Gear	CNW1183
5	Spring	CBH3010	40	Rack	CNW1184
6	Spring	CBH2855	41	Gear	CNW1185
7	Spring	CBH2856	42	Gear	CNW1186
8	•••••		43	Gear	CNW1187
9	Screw	BSZ26P060FTC	44	Gear	CNW2287
10	Spring	CBH3011	45	Clamper	CNW1190
11	Coil Spring	CBH3095	46	Arm	CNW1192
12	Spring	CBH3014	47	Holder	CNW1193
13	Spring	CBH3145	48	Holder	CNW1194
14	Spring	CBH3016	49	Damper	CNW1197
15	Spring	CBH3017	50	Damper	CNW1198
16	Spring	CBH3086	51	Arm	CNW1726
17	Spring	CBH3019	52	Motor Unit(M2)(LOAD/CRG)	CXC4026
18	•••••		53	Screw Unit	CXC8894
19	Leaf Spring	CBL1824	54	Arm Assy	CXE8953
20	Pickup Unit(P11)(Service) for CXK5808 CXX4754 Pickup Unit(P10.6)(Service) for CXK5807 CXX3556		55	Washer	CBF1037
21	Bracket	CND4553	56	Washer	CBF1038
22	Arm	CND7608	57	Arm	CND6242
23	Bracket	CND6127	58	Collar	CNW2444
24	Bracket	CND5710	59	Roller	CNW2500
25	Lever	CND6834	60	Gear Unit	CXE8952
26	•••••		61	Washer	YE15FTC
27	Rack	CNV8342	62	Chassis Unit	CXE9531
28	Guide	CNW3489	63	Motor Unit(M1)(SPDL)	CXE2273
29	Roller	CNW1172	64	Screw	JFZ20P025FTC
30	•••••		65	Screw	JGZ17P022FTC
31	Arm	CNW2241	66	Screw	EBA1028
32	Roller	CNW1175	67	CD Core Unit (S11.6VA)(for CXK5808) CWX4269 CD Core Unit (S11.6STD)(for CXK5807) CWX4023	
33	•••••		68	Chassis	CNA3373
34	Arm	CNW1177			
35	Arm	CNW1178			

Notes: For No.20 and 67, please refer to "1.4 NOTES ON REPLACING PARTS" for part distinguish.

12. ELECTRICAL PARTS LIST

NOTE:

- Parts whose parts numbers are omitted are subject to being not supplied.
- The part numbers shown below indicate chip components.

Chip Resistor

RS1/○S○○○○J,RS1/○○S○○○○J

Chip Capacitor (except for CQS.....)

CKS....., CCS....., CSZS.....

- Parts marked by " * " are generally unavailable because they are not in our Master Spare Parts List.
- The \triangle mark found on some component parts indicates the importance of the safety factor of the part. Therefore, when replacing, be sure to use parts of identical designation.
- The expression of the unit in this manual is shown by u instead of μ . Please do not make a mistake.

Circuit Symbol and No. Part No. Circuit Symbol and No. Part No.

A:DEH-S6000BS/XNUC

B:DEH-S6010BS/XNUC

Unit Number: QWM4581(A)

Unit Number: QWM4682(B)

Unit Name : Tuner Amp Unit

Unit Number: QWM4636

Unit Name : Keyboard Unit

Unit Number: CWX4269

Unit Name : CD Core Unit(S11.6VA)

Unit Number: CWX4023

Unit Name : CD Core Unit(S11.6STD)

Notes:

For CD Core Unit, please refer to "1.4 NOTES ON REPLACING PARTS" for part distinguish.

A

Unit Number: QWM4581(A)

Unit Number: QWM4682(B)

Unit Name : Tuner Amp Unit

MISCELLANEOUS

IC 201	Power supply IC	BD49101ARFS
IC 461	DC/DC Converter IC(B)	NJW4132U2-A
IC 501	Microprocessor IC	STA1080
IC 502	IC	S-80827CNMC-B8M
IC 503	Logic IC	TC7SET08FUS3
IC 504	Logic IC	TC7SH126FUS1
IC 701	IC	337S3959
IC 711	RAM IC	M12L128168A-5TG2N
IC 731	ROM IC	M95512-RMN6P
IC 741	Flash ROM Unit	QVQ1016
IC 742	IC	MX25L1636EM2I-08G
IC 761	E-VOL System LSI(A)	BD37067FV
IC 761	E-VOL System LSI(B)	BD37068FV
IC 851	Tuner IC	TEF6686HN-V102
IC 1301	Power Amp IC	TCB501HQ

IC 1302	Logic IC	TC7SH32FUS2
Q 111	Bipolar Transistor	LSCR523UB
Q 121	Resistor Built-in Transistor	LTC014EEB
Q 141	Bipolar Transistor	LSCR523UB
Q 142	Bipolar Transistor	LSCR523UB

Q 201	Bipolar Transistor	LSCR523UB
Q 202	FET	SSM3J332R
Q 203	Power MOS FET	RRR040P03
Q 204	Bipolar Transistor	LSCR523UB
Q 205	FET	SSM3J332R
Q 441	Transistor	2SAR502UB
Q 442	Resistor Built-in Transistor	LTC023YEB
Q 701	Bipolar Transistor	LSAR523UB
Q 1101	Resistor Built-in Transistor	LTC014EEB
Q 1241	Transistor	IMH23
Q 1242	Transistor	IMH23
Q 1243	Transistor	IMH23
Q 1301	Transistor	EMD52
Q 1302	Transistor	ISA1602AM1
D 101	Diode	D1F60-5053
D 102	Diode	D1F60-5053
D 111	Diode	DZ2J068M0
D 121	Rectifier Diode	DA2J101
D 141	Diode	DZ2J075M0
D 201	Schottky Diode	RB162M-40
D 202	Diode	RR264MM-400TF
D 203	Diode	RB056L-40
D 204	Diode	RR264MM-400TF
D 206	Schottky Diode	CMS30I30A
D 207	Schottky Diode	RB751SM-40
D 208	Schottky Diode	RB751SM-40
D 210	Schottky Diode	DB2J41100
D 461	Schottky Diode(B)	RB551VM-30
D 501	Schottky Diode	RB751SM-40
D 502	Schottky Diode	RB751SM-40
D 506	Diode	DZ2J036M0
D 507	Diode	DZ2J036M0
D 508	Diode	DZ2J051M0
D 1101	Diode	DZ2J180M0
D 1201	Diode	DZ2S068C
D 1204	Diode	DZ2J180M0
D 1205	Diode	DZ2J180M0
D 1206	Diode	DZ2S068C
D 1207	Diode	DZ2S068C
D 1208	Diode	DZ2S068C
D 1209	Diode	DZ2S068C
D 1210	Diode	DZ2S068C
D 1302	Diode	RR264MM-400TF

<u>Circuit Symbol and No.</u>		<u>Part No.</u>	<u>Circuit Symbol and No.</u>		<u>Part No.</u>
D 1303	Schottky Diode	RB751SM-40	JA 1231	Connector	CKS3806
L 101	Choke Coil	CTH1620	JA 1241	Jack	CKB1113
			JA 1276	Jack	CKN1103
L 201	SMD SPL Inductor	CTH1521			
L 202	SMD SPL Inductor	CTH1524	<u>RESISTORS</u>		
L 203	Chip Beads	VTL1133	R 111		RS1/16SS223J
L 441	Inductor	CTF1736	R 112		RS1/16SS473J
L 461	Choke Coil(B)	CTH1561	R 113		RS1/16SS682J
			R 114		RS1/4SA102J
L 501	Chip Beads	VTL1133	R 121		RS1/16SS103J
L 502	Inductor	CTF1645			
L 511	Chip Beads	VTL1133	R 123		RS1/4SA102J
L 513	Chip Beads	VTL1133	R 141		RS1/16SS104J
L 514	Chip Beads	VTL1126	R 142		RS1/16SS473J
			R 143		RS1/16SS103J
L 515	Chip Beads	VTL1133	R 144		RS1/16SS472J
L 516	Chip Beads	VTL1133			
L 517	Chip Beads	VTL1133	R 145		RS1/16SS0R0J
L 518	Chip Beads	VTL1133	R 201		RS1/16SS102J
L 519	Chip Beads	VTL1133	R 202		RS1/16SS3303D
			R 203		RS1/10SR0R0J
L 520	Chip Beads	VTL1133	R 204		RS1/10SR0R0J
L 711	Chip Beads	VTL1133			
L 731	Chip Beads	VTL1126	R 206		RS1/16SS472J
L 741	Chip Beads	VTL1133	R 207		RS1/16SS103J
L 742	Chip Beads	VTL1126	R 208		RS1/16SS473J
			R 209		RS1/10SR472J
L 854	Inductor	LCMAR27J1608	R 210		RS1/16SS103J
L 855	Inductor	CTF1786			
L 856	Inductor	CTF1389	R 211		RS1/10SR472J
L 860	Inductor	LCYC150K1608	R 212		RS1/16SS103J
L 1001	Inductor	CTF1786	R 213		RS1/16SS132J
			R 214		RS1/16SS102J
L 1101	Inductor	CTF1389	R 215		RS1/16SS2403D
L 1102	Chip Beads	VTL1133			
L 1103	Chip Beads	VTL1133	R 216		RS1/16SS7502D
L 1104	Chip Beads	VTL1133	R 217		RS1/16SS4303D
L 1201	Inductor	CTF1713	R 218		RS1/16SS4303D
			R 219		RS1/16SS273J
L 1231	Chip Beads	VTL1133	R 220		RS1/16SS474J
L 1232	Chip Beads	VTL1133			
L 1276	Chip Beads	VTL1126	R 221		RS1/16SS473J
L 1277	Chip Beads	VTL1126	R 222		RS1/16SS6802D
L 1292	Chip Beads	VTL1126	R 223	20 mohm	CCN1401
			R 224		RS1/16SS6802D
L 1293	Chip Beads	VTL1126	R 225		RS1/16SS102J
L 1294	Chip Beads	VTL1126			
L 1295	Chip Beads	VTL1126	R 226		RS1/16SS1203D
L 1296	Chip Beads	VTL1126	R 227		RS1/16SS1802D
L 1297	Chip Beads	VTL1126	R 229		RS1/16SS3902D
			R 230		RS1/16SS682J
T 851	Variable Coil	CTC1215	R 231		RS1/16SS4703D
X 501	Resonator 24 MHz	CSS1773			
X 502	Resonator 32.768 kHz	CSS1807	R 232		RS1/16SS1503D
X 851	Crystal Resonator	CSS1868	R 233		RS1/16SS1003D
S 501	Switch(RESET)	CSG1020	R 234		RS1/16SS7503D
			R 235		RS1/16SS1603D
P 852	Surge Absorber	IMSA-6803-01Y900	R 236		RS1/16SS103J
P 1231	Poly Switch	FSMD110-24R			
P 1243	Poly Switch	FSMD075-24R	R 238		RS1/16SS103J
P 1276	Poly Switch	FSMD075-24R	R 239		RS1/16SS101J
VA1101	SMD Varistor	MLV0402ES012V0010N	R 240		RS1/16SS101J
			R 241		RS1/16SS680J
VA1201	SMD Varistor	MLV0402ES012V0010N	R 242		RS1/16SS4701D
VA1202	SMD Varistor	MLV0402ES012V0010N			
U 1001	BT Module	CWX4751	R 243		RS1/16SS393J
CN1101	Connector	VKN1192	R 244		RS1/16SS103J
CN1201	Connector	CKS6452	R 248		RS1/16SS473J
			R 250		RS1/10SR471J
JA 101	Plug	CKM1624	R 263		RS1/10SR103J
JA 851	Antenna Jack	CKX1104			

	<u>Circuit Symbol and No.</u>	<u>Part No.</u>	<u>Circuit Symbol and No.</u>	<u>Part No.</u>
	R 269	RS1/16SS101J		
	R 301	RS1/10SR0R0J	R 558	RS1/16SS222J
A	R 441	RS1/16SS103J	R 559	RS1/16SS222J
	R 442	RS1/10SR221J	R 560	RS1/16SS473J
	R 461 (B)	RS1/10SR0R0J	R 561	RS1/16SS103J
			R 562	RS1/16SS472J
	R 462 (B)	RS1/16SS0R0J		
	R 463 (B)	RS1/16SS2202D	R 563	RS1/16SS472J
	R 464 (B)	RS1/16SS4701D	R 564	RS1/16SS472J
	R 465 (B)	RS1/16SS4303D	R 566	RAB4CQ103J
	R 466 (B)	RS1/10SR102J	R 567	RS1/16SS472J
			R 568	RS1/16SS0R0J
	R 467 (B)	RS1/10SR0R0J		
	R 501 (B)	RS1/16SS222J	R 570	RS1/16SS221J
	R 503	RS1/16SS100J	R 571	RS1/16SS221J
B	R 504	RS1/16SS100J	R 572	RS1/16SS472J
	R 505	RS1/16SS221J	R 573	RS1/16SS473J
			R 574	RS1/16SS473J
	R 506	RS1/16SS473J		
	R 507	RS1/16SS473J	R 575	RS1/16SS473J
	R 508	RS1/16SS473J	R 578	RS1/16SS473J
	R 509	RS1/16SS473J	R 579	RS1/16SS473J
	R 510	RS1/16SS473J	R 580	RS1/16SS473J
			R 581	RS1/16SS0R0J
	R 511	RS1/16SS473J		
	R 512	RS1/16SS0R0J	R 583	RS1/16SS0R0J
	R 513	RS1/16SS222J	R 584	RS1/16SS102J
	R 514	RS1/16SS101J	R 585	RS1/16SS0R0J
C	R 515	RS1/16SS103J	R 586	RS1/16SS103J
			R 587	RS1/16SS0R0J
	R 516	RS1/16SS101J		
	R 517	RS1/16SS103J	R 588	RS1/16SS221J
	R 518	RS1/16SS472J	R 589	RS1/16SS0R0J
	R 519	RS1/16SS271J	R 590	RS1/16SS221J
	R 521	RS1/16SS473J	R 591	RS1/16SS361J
			R 597	RS1/16SS102J
	R 522	RS1/16SS0R0J		
	R 524	RS1/16SS3001D	R 598	RS1/16SS102J
	R 525	RS1/16SS103J	R 599	RS1/16SS102J
	R 526	RS1/16SS1213F	R 603	RS1/16SS101J
	R 530	RS1/16SS472J	R 604	RS1/16SS101J
			R 605	RS1/16SS101J
D	R 531	RS1/16SS222J		
	R 532	RS1/16SS222J	R 607	RS1/16SS101J
	R 533	RS1/10SR103J	R 611	RS1/16SS472J
	R 534	RS1/10SR103J	R 614	RS1/16SS473J
	R 535	RS1/10SR0R0J	R 615	RS1/16SS103J
			R 617	RS1/16SS473J
	R 536	RS1/16SS472J		
	R 538 (A)	RS1/16SS472J	R 627	RS1/16SS153J
	R 538 (B)	RS1/16SS103J	R 628	RS1/16SS153J
	R 539 (B)	RS1/16SS473J	R 629	RS1/16SS472J
	R 540	RS1/16SS103J	R 630	RS1/16SS101J
			R 631	RS1/16SS0R0J
E	R 541	RS1/16SS103J		
	R 542	RS1/10SR0R0J	R 632	RS1/16SS101J
	R 543	RS1/10SR0R0J	R 633	RS1/16SS101J
	R 544	RS1/16SS102J	R 634	RS1/16SS101J
	R 545	RS1/16SS473J	R 635	RS1/16SS101J
			R 636	RS1/16SS101J
	R 546	RS1/16SS273J		
	R 547	RS1/16SS473J	R 637	RS1/16SS221J
	R 548	RS1/16SS102J	R 638	RS1/16SS221J
	R 550	RS1/16SS103J	R 639	RS1/16SS101J
	R 551	RS1/16SS103J	R 640	RS1/16SS101J
			R 642	RS1/16SS221J
	R 552	RS1/16SS102J		
F	R 554	RS1/16SS222J	R 643	RS1/16SS101J
	R 555	RS1/16SS135J	R 644	RS1/16SS473J
	R 556	RS1/16SS101J	R 645	RS1/16SS101J
	R 557	RS1/16SS101J	R 646	RS1/16SS101J

<u>Circuit Symbol and No.</u>	<u>Part No.</u>	<u>Circuit Symbol and No.</u>	<u>Part No.</u>
R 647	RS1/16SS102J	R 764	RS1/16SS101J
R 648	RS1/16SS102J	R 765 (B)	RS1/16SS222J
R 650	RS1/16SS101J	R 766 (A)	RS1/16SS0R0J
R 651	RS1/16SS102J	R 767	RS1/16SS104J
R 652	RS1/16SS101J	R 768	RS1/16SS181J
R 653	RS1/16SS0R0J	R 769	RS1/8SQOR0J
R 657	RS1/16SS101J	R 770	RS1/10SR0R0J
R 658	RS1/16SS101J	R 851	RS1/16SS105J
R 659	RS1/16SS101J	R 852	RS1/16SS105J
R 660	RS1/16SS101J	R 853	RS1/16SS391J
R 661	RS1/16SS101J	R 864	RS1/16SS103J
R 663	RS1/16SS101J	R 868	RS1/16SS103J
R 664	RS1/16SS101J	R 870	RS1/16SS101J
R 672	RS1/16SS101J	R 871	RS1/16SS0R0J
R 690	RS1/16SS472J	R 872	RS1/16SS0R0J
R 701	RS1/16SS103J	R 873	RS1/16SS182J
R 702	RS1/16SS472J	R 874	RS1/16SS101J
R 703	RS1/16SS101J	R 875	RS1/16SS472J
R 704	RS1/16SS101J	R 890	RS1/16SS0R0J
R 705	RS1/16SS222J	R 1001	RS1/16SS0R0J
R 706	RS1/16SS222J	R 1002	RS1/16SS221J
R 707	RS1/16SS472J	R 1004	RS1/16SS473J
R 708	RS1/16SS272J	R 1005	RS1/16SS221J
R 709	RS1/16SS473J	R 1006	RS1/16SS0R0J
R 710	RS1/16SS0R0J	R 1007	RS1/16SS0R0J
R 714	RAB4CQ121J	R 1011	RS1/16SS221J
R 715	RAB4CQ121J	R 1012	RS1/16SS221J
R 716	RAB4CQ121J	R 1013	RS1/16SS0R0J
R 717	RAB4CQ121J	R 1017	RS1/16SS473J
R 718	RAB4CQ121J	R 1018	RS1/16SS473J
R 719	RAB4CQ121J	R 1101	RS1/16SS104J
R 720	RAB4CQ121J	R 1104	RS1/16SS472J
R 721	RAB4CQ121J	R 1105	RS1/16SS221J
R 722	RAB4CQ121J	R 1106	RS1/16SS221J
R 723	RS1/10SR0R0J	R 1107	RS1/16SS101J
R 724	RS1/16SS121J	R 1108	RS1/16SS221J
R 731	RS1/16SS330J	R 1109	RS1/16SS101J
R 732	RS1/16SS330J	R 1110	RS1/16SS102J
R 733	RS1/16SS103J	R 1112	RS1/16SS221J
R 734	RS1/16SS103J	R 1114	RS1/16SS473J
R 735	RS1/16SS103J	R 1115	RS1/16SS472J
R 736	RS1/16SS330J	R 1116	RS1/16SS472J
R 737	RS1/16SS330J	R 1117	RS1/16SS472J
R 741	RS1/16SS330J	R 1119	RS1/16SS473J
R 742	RS1/16SS103J	R 1120	RS1/16SS151J
R 743	RS1/16SS103J	R 1121	RS1/16SS151J
R 744	RS1/16SS330J	R 1122	RS1/16SS151J
R 745	RS1/16SS330J	R 1201	RS1/10SR222J
R 746	RS1/16SS103J	R 1203	RS1/16SS223J
R 747	RS1/16SS330J	R 1204	RS1/16SS223J
R 748	RS1/16SS330J	R 1205	RS1/10SR222J
R 749	RS1/16SS330J	R 1206	RS1/10SR221J
R 750	RS1/16SS103J	R 1207	RS1/10SR221J
R 751	RS1/16SS103J	R 1208	RS1/10SR0R0J
R 753	RS1/16SS103J	R 1209	RS1/10SR222J
R 754	RS1/16SS330J	R 1210	RS1/10SR222J
R 761	RS1/10SR221J	R 1211	RS1/10SR222J
R 762 (B)	RS1/16SS0R0J	R 1212	RS1/10SR222J
R 763	RS1/16SS101J	R 1213	RS1/16SS123J

Circuit Symbol and No.Part No.Circuit Symbol and No.Part No.

R 1214
R 1215
R 1231

RS1/10SR222J
RS1/10SR101J
RS1/16SS181J

R 1421
R 1422
R 1427

RS1/16SS0R0J
RS1/16SS0R0J
RS1/16SS0R0J

R 1232
R 1233
R 1234
R 1235
R 1236

RS1/16SS181J
RS1/16SS223J
RS1/16SS223J
RS1/10SR822J
RS1/10SR471J

CAPACITORS

C 101 2 200 uF/16 V
C 102
C 103
C 104
C 105

CCH1405
CKSRYB103K50
CKSSYB102K50
CKSSYB102K50
CKSSYB102K50

R 1237
R 1238
R 1239
R 1241 (A)
R 1241 (B)

RS1/16SS104J
RS1/16SS471J
RS1/10SR471J
RS1/16SS821J
RS1/16SS470J

C 106
C 107
C 108
C 109
C 110

CKSSYB102K50
CKSSYB102K50
CKSSYB102K50
CKSSYB102K50
CKSSYB102K50

R 1242 (A)
R 1242 (B)
R 1243 (A)
R 1243 (B)
R 1244 (A)

RS1/16SS821J
RS1/16SS470J
RS1/16SS821J
RS1/16SS470J
RS1/16SS821J

C 111
C 121
C 122
C 201
C 202

CKSRYX104K50
CKSRYB104K16
CKSRYX105K50
CCSSCH681J50
CEVW221M16

R 1244 (B)
R 1245 (A)
R 1245 (B)
R 1246 (A)
R 1246 (B)

RS1/16SS470J
RS1/16SS821J
RS1/16SS470J
RS1/16SS821J
RS1/16SS470J

C 203
C 204
C 205
C 206
C 207

CKSRYX106M6R3
CEVQW221M6R3
CKSRYX105K50
CKSYX106K35
CKSSYB104K10

R 1247
R 1248
R 1249
R 1250
R 1251

RS1/16SS223J
RS1/16SS223J
RS1/16SS223J
RS1/16SS223J
RS1/16SS223J

C 208
C 209
C 210 2 200 uF/16 V
C 211
C 212

CCSSCH471J50
CCSSCH681J50
CCH1405
CKSQYX106K10
CEAT102M16

R 1252
R 1253
R 1255
R 1278
R 1280

RS1/16SS223J
RS1/16SS0R0J
RS1/16SS0R0J
RS1/16SS102J
RS1/16SS102J

C 213
C 214
C 215
C 216
C 217

CKSSYB222K50
CKSRYX106M6R3
CKSRYB104K16
CKSRYX104K50
CCSRCH102J50

R 1281
R 1282
R 1284
R 1285
R 1301

RS1/16SS101J
RS1/16SS101J
RS1/16SS0R0J
RS1/16SS0R0J
RS1/16SS123J

C 218
C 220
C 221
C 222
C 223

CKSYX106K35
CKSYX106K35
CKSYX106K35
CEVW221M16
CCSSCH221J50

R 1302
R 1303
R 1304
R 1306
R 1307

RS1/16SS103J
RS1/16SS221J
RS1/16SS0R0J
RS1/16SS103J
RS1/16SS0R0J

C 224
C 225
C 227
C 228
C 230

CKSRYB105K10
CKSRYB105K10
CCSSCH221J50
CCSSCH102J50
CKSQYX106K10

R 1308
R 1309
R 1312
R 1313
R 1321 (A)

RS1/8SQ0R0J
RS1/8SQ0R0J
RS1/16SS103J
RS1/16SS102J
RS1/16SS0R0J

C 231
C 232
C 234
C 236
C 237

CKSRYB104K16
CEHVW101M6R3
CKSRYX475K6R3
CKSYX106K35
CKSRYB104K16

R 1321 (B)
R 1322 (A)
R 1322 (B)
R 1323 (A)
R 1323 (B)

RS1/16SS432J
RS1/16SS0R0J
RS1/16SS432J
RS1/16SS0R0J
RS1/16SS432J

C 238
C 239
C 240
C 241
C 242

CKSYX226M16
CCSSCH100D50
CCSSCH100D50
CKSQYX106K10
CKSRYB104K16

R 1324 (A)
R 1324 (B)
R 1325 (B)
R 1326 (B)
R 1327 (B)

RS1/16SS0R0J
RS1/16SS432J
RS1/16SS272J
RS1/16SS272J
RS1/16SS272J

C 243
C 247
C 248
C 249
C 250

CKSYX106K35
CKSRYB105K10
CKSRYX105K50
CCSSCH820J50
CKSRYX225K10

R 1328 (B)

RS1/16SS272J

C 250

<u>Circuit Symbol and No.</u>	<u>Part No.</u>	<u>Circuit Symbol and No.</u>	<u>Part No.</u>
C 251	CKSRYB105K10	C 546	CCSSCH120J50
C 252	CKSRYX475K6R3	C 551	CKSSYB104K10
C 253	CKSRYX105K50	C 552	CKSRYX475K6R3
C 255	CKSSYX105K10	C 553	CKSQYX106K10
C 257	CKSYX106K35	C 555	CKSSYB103K16
C 259	CKSQYX106K10	C 556	CKSSYB104K10
C 260	CKSQYX106K10	C 557	CKSSYB104K10
C 261	CKSSYB104K10	C 558	CKSSYB104K10
C 270	CKSRYX475K6R3	C 559	CKSQYB224K50
C 441	CCSRCH101J50	C 560	CKSSYB103K16
C 442	CKSQYX106K10	C 565	CCSRCH270J50
C 443	CCSRCH101J50	C 566	CCSRCH330J50
C 444	CKSQYX106K10	C 569	CCSSCH101J50
C 461 (B)	CKSYX106K35	C 573	CCSRCH101J50
C 462 (B)	CKSYX106K35	C 574	CCSSCH101J50
C 463 (B)	CKSQYX106K16	C 575	CKSSYB104K10
C 464 (B)	CKSSYB221K50	C 576	CKSSYB102K50
C 502	CKSSYB104K10	C 577	CCSSCH101J50
C 503	CKSRYX475K6R3	C 580	CKSRYB104K16
C 505	CKSSYB104K10	C 588	CKSSYB104K10
C 506	CKSRYX475K6R3	C 590	CKSSYB472K25
C 507	CKSRYX475K6R3	C 591	CKSSYB472K25
C 508	CKSSYB104K10	C 592	CKSSYB472K25
C 509	CKSRYX475K6R3	C 593	CKSSYB472K25
C 510	CKSSYB104K10	C 595	CKSSYB472K25
C 511	CKSRYX475K6R3	C 701	CKSSYB104K10
C 512	CKSSYB104K10	C 702	CKSSYB104K10
C 513	CKSRYX475K6R3	C 712	CKSSYX105K10
C 514	CKSSYB104K10	C 713	CKSSYB104K10
C 515	CKSSYX105K10	C 714	CKSSYX105K10
C 516	CKSRYX225K16	C 715	CKSSYX105K10
C 517	CKSSYB104K10	C 716	CKSSYX105K10
C 518	CCSSCH100D50	C 717	CKSRYX475K6R3
C 519	CCSSCH100D50	C 718	CKSSYX105K10
C 520	CKSRYX475K6R3	C 719	CKSSYB104K10
C 521	CKSSYB104K10	C 721	CKSRYX105K16
C 522	CKSRYX475K6R3	C 722	CKSSYB104K10
C 523	CKSRYX475K6R3	C 723	CCSSCH102J50
C 524	CKSRYX475K6R3	C 729	CKSQYX106K10
C 525	CKSRYX106M6R3	C 731	CKSSYB104K10
C 526	CKSSYB103K16	C 741	CKSRYX225K10
C 527	CKSRYX106M6R3	C 742	CKSSYB104K10
C 528	CKSSYB103K16	C 743	CKSSYB104K10
C 529	CKSSYB104K10	C 761	CKSRYB105K10
C 530	CKSRYX475K6R3	C 762	CKSRYB105K10
C 531	CKSSYX105K10	C 763	CKSRYB105K10
C 532	CKSSYX105K10	C 764	CKSRYB105K10
C 533	CKSRYX475K6R3	C 765	CKSRYB105K10
C 534	CKSSYB104K10	C 766	CKSRYB105K10
C 535	CEVW221M10	C 769	CKSRYB105K10
C 536	CCSSCH101J50	C 770	CKSRYB105K10
C 537	CKSSYB103K16	C 771	CKSRYB105K10
C 538	CKSRYX106M6R3	C 772	CKSRYB105K10
C 539	CKSSYB103K16	C 773	CKSRYB105K10
C 540	CKSRYX106M6R3	C 774	CCSSCH151J50
C 541	CKSSYB222K50	C 775	CCSSCH151J50
C 542	CKSSYB104K10	C 776	CKSRYX104K50
C 543	CKSSYX105K10	C 777	CKSYX106K35
C 544	CKSSYB473K16	C 778	CKSRYB105K10
C 545	CCSSCH100D50		

Circuit Symbol and No.Part No.Circuit Symbol and No.Part No.

	C 779	CKSQYX106K10	C 1245 (B)	CKSQYX106K25
			C 1246 (A)	CKSQYX106K10
A	C 780	CKSSYB104K16		
	C 781	CKSRYB105K10	C 1246 (B)	CKSQYX106K25
	C 782	CKSRYB105K10	C 1247 (A)	CCSSCH102J50
	C 783	CKSRYB105K10	C 1247 (B)	CKSSYB103K16
	C 784	CKSRYB105K10	C 1248 (A)	CCSSCH102J50
			C 1248 (B)	CKSSYB103K16
	C 785	CKSRYB105K10		
	C 787	CKSQYX106K16	C 1249 (A)	CCSSCH102J50
	C 788	CKSQYX106K16	C 1249 (B)	CKSSYB103K16
	C 790	CKSQYX106K10	C 1250 (A)	CCSSCH102J50
	C 791	CKSRYB103K50	C 1250 (B)	CKSSYB103K16
			C 1251 (A)	CCSSCH102J50
	C 794	CCSRCH101J50		
B	C 853	CCSSCH100D50	C 1251 (B)	CKSSYB103K16
	C 854	CCSSCH471J50	C 1252 (A)	CCSSCH102J50
	C 856	CKSRYX104K50	C 1252 (B)	CKSSYB103K16
	C 857	CKSRYX104K50	C 1253	CKSSYB103K16
			C 1254	CKSSYB104K10
	C 858	CCSSCH220J50		
	C 859	CCSSCH331J50	C 1255	CCSRCH331J50
	C 865	CKSRYX225K10	C 1256	CKSSYX105K10
	C 866	CKSSYB224K6R3	C 1276	CKSRYB104K16
	C 867	CKSSYB102K50	C 1277	CKSRYB104K16
			C 1278	CKSRYB104K16
	C 870	CCSSCH102J50		
	C 872	CKSSYB104K10	C 1279	CKSRYB104K16
C	C 874	CCSSCH390J50	C 1280	CKSSYB102K50
	C 875	CKSSYB104K10	C 1281	CKSSYB102K50
	C 878	CKSSYB152K50	C 1301	CKSQYB474K25
			C 1302	CKSQYB474K25
	C 882	CKSSYX105K10		
	C 884 (A)	CKSSYB104K16	C 1303	CKSQYB474K25
	C 885	CCG1318	C 1304	CKSQYB474K25
	C 890	CKSRYX106M6R3	C 1305	CKSSYB104K10
	C 891	CKSRYX225K10	C 1306	CKSRYB474K10
			C 1308	CKSRYX104K50
	C 1003	CKSRYB104K16		
	C 1004	CKSRYB104K16	C 1310	CKSQYX106K16
	C 1101	CKSSYB103K16	C 1311	CKSRYX225K10
D	C 1105	CKSSYX105K10	C 1312	CKSRYX104K50
	C 1106	CKSSYX105K10	C 1316	CKSRYX104K50
			C 1317	CKSRYX104K50
	C 1109	CCSSCH102J50		
	C 1201	CCSRCH102J50	C 1318	CKSRYX104K50
	C 1202	CKSRYX104K50	C 1321	CKSRYX106M6R3
	C 1203	CKSRYB104K16		
	C 1204	CKSRYB105K10		
	C 1205	CCSRCH221J50		
	C 1206	CCSRCH221J50		
	C 1207	CKSRYB474K10		
	C 1210	CKSRYB105K10		
E	C 1212	CCSSCH470J50		
	C 1217	CCSSCH121J50		
	C 1221	CKSYX106K35		
	C 1231	CKSRYB104K16		
	C 1232	CKSRYX104K50		
	C 1241 (A)	CKSQYX106K10		
	C 1241 (B)	CKSQYX106K25		
	C 1242 (A)	CKSQYX106K10		
	C 1242 (B)	CKSQYX106K25		
	C 1243 (A)	CKSQYX106K10		
	C 1243 (B)	CKSQYX106K25		
F	C 1244 (A)	CKSQYX106K10		
	C 1244 (B)	CKSQYX106K25		
	C 1245 (A)	CKSQYX106K10		

B**Unit Number: QWM4636****Unit Name : Keyboard Unit****MISCELLANEOUS**

IC 1801	Driver IC	BU97540KV-M
IC 1802	Driver IC	BU97540KV-M
IC 1951	IR RC REC Module	PNJ4833M
Q 1841	Bipolar Transistor	LSCR523UB
Q 1842	Bipolar Transistor	LSCR523UB
Q 1843	Bipolar Transistor	LSCR523UB
Q 1847	Bipolar Transistor	LSCR523UB
Q 1848	Bipolar Transistor	LSCR523UB
Q 1849	Bipolar Transistor	LSCR523UB
D 1841	LED	SMLVN6RGB3U(B)
D 1842	LED	SMLVN6RGB3U(B)
D 1843	LED	SMLVN6RGB3U(B)
D 1844	LED	SMLVN6RGB3U(B)
D 1845	LED	SMLVN6RGB3U(B)

<u>Circuit Symbol and No.</u>		<u>Part No.</u>
D 1901	Diode	SZESD7351HG
D 1902	Diode	SZESD7351HG
D 1921	Diode	DZ2S068C
D 1922	Diode	DZ2S068C
D 1923	Diode	DZ2S068C
L 1921	Ferrite Bead	CTF1528
L 1922	Ferrite Bead	CTF1528
L 1923	Ferrite Bead	CTF1528
S 1821	Push Switch	CSG1155
S 1822	Push Switch	CSG1155
S 1823	Push Switch	CSG1155
S 1825	Push Switch	CSG1155
S 1826	Push Switch	CSG1155
S 1827	Push Switch	CSG1155
S 1828	Push Switch	CSG1155
S 1829	Push Switch	CSG1155
S 1830	Push Switch	CSG1155
S 1831	Push Switch	CSG1155
S 1832	Push Switch	CSG1155
S 1833	Push Switch	CSG1155
S 1834	Push Switch	CSG1155
S 1835	Push Switch	CSG1155
S 1836	Encoder(MULTI-CONTROL)	CSD1168
CN1941	Connector	CKS6451
JA1901	Connector	CKS6443
JA1921	Jack	CKN1090
V 1801	Segment LCD	CAW2057

RESISTORS

R 1805	RS1/16SS472J
R 1821	RS1/16SS273J
R 1841	RS1/16SS332J
R 1842	RS1/16SS152J
R 1843	RS1/16SS332J
R 1844	RS1/16SS152J
R 1845	RS1/16SS332J
R 1846	RS1/16SS152J
R 1847	RS1/16SS470J
R 1849	RS1/16SS470J
R 1851	RS1/16SS470J
R 1865	RS1/16SS332J
R 1866	RS1/16SS152J
R 1867	RS1/16SS332J
R 1868	RS1/16SS152J
R 1869	RS1/16SS332J
R 1870	RS1/16SS152J
R 1871	RS1/16SS390J
R 1873	RS1/16SS390J
R 1875	RS1/16SS390J
R 1877	RS1/16SS0R0J
R 1878	RS1/16SS0R0J
R 1879	RS1/16SS0R0J
R 1883	RS1/8SQ101J
R 1884	RS1/10SR221J
R 1885	RS1/10SR0R0J
R 1886	RS1/10SR0R0J
R 1887	RS1/16SS101J
R 1888	RS1/16SS101J
R 1941	RS1/10SR222J

<u>Circuit Symbol and No.</u>	<u>Part No.</u>
R 1942	RS1/10SR222J
R 1943	RS1/10SR222J
R 1944	RS1/10SR222J
R 1953	RS1/10SR101J

CAPACITORS

C 1801	CKSRYB105K10
C 1802	CKSRYB105K10
C 1903	CSSRCH471J50
C 1904	CKSRYX105K16
C 1905	CKSRYX105K16
C 1906	4.7 uF
C 1951	10 uF
C 1952	CCSSCH470J50
C 1953	CCSSCH470J50

C

Unit Number: CWX4269

Unit Name : CD Core Unit(S11.6VA)

MISCELLANEOUS

IC 201	IC	PEQ094A
IC 301	Driver IC	BD8223EFV
Q 101	Transistor	2SAR502UB
Q 102	Chip Digital Transistor	LTA123JUB
X 201	Ceramic Resonator 16.934 MHz	CSS1603
S 901	Lever Switch(HOME)	CSN1090
S 903	Spring Switch(DSCSNS)	CSN1081
CN101	Connector	CKS4808
CN701	Connector	CKS6146

RESISTORS

R 101	RS1/10SR2R4J
R 102	RS1/10SR2R4J
R 103	RS1/10SR2R7J
R 108	RS1/16SS105J
R 109	RS1/16SS152J
R 214	RS1/16SS103J
R 215	RS1/16SS393J
R 216	RS1/16SS102J
R 217	RS1/16SS562J
R 218	RS1/16SS472J
R 229	RS1/16SS471J
R 232	RS1/16SS0R0J
R 237	RS1/16SS221J
R 240	RS1/16SS473J
R 245	RS1/16SS104J
R 254	RS1/16SS104J
R 260	RS1/16SS103J
R 264	RS1/16SS102J
R 281	RS1/16SS560J
R 282	RS1/16SS560J
R 291	RS1/16SS560J
R 294	RS1/16SS471J
R 303	RS1/16SS123J
R 304	RS1/16SS123J
R 305	RS1/16SS102J
R 306	RS1/16SS472J
R 307	RS1/16SS102J
R 308	RS1/16SS472J
R 309	RS1/16SS473J
R 310	RS1/16SS472J

Circuit Symbol and No.Part No.Circuit Symbol and No.Part No.

R 311
R 312
R 313
R 701
R 702

R 706

RS1/16SS472J
RS1/16SS472J
RS1/16SS472J
RS1/16SS101J
RS1/16SS101J

RS1/16SS221J

RESISTORS

R 101
R 102
R 103
R 108
R 109

RS1/10SR2R4J
RS1/10SR2R4J
RS1/10SR2R7J
RS1/16SS105J
RS1/16SS222J

R 214
R 215
R 216
R 217
R 218

RS1/16SS103J
RS1/16SS393J
RS1/16SS122J
RS1/16SS562J
RS1/16SS472J

R 229
R 232
R 237
R 240
R 245

RS1/16SS471J
RS1/16SS0R0J
RS1/16SS221J
RS1/16SS473J
RS1/16SS104J

R 254
R 260
R 264
R 281
R 282

RS1/16SS104J
RS1/16SS103J
RS1/16SS102J
RS1/16SS560J
RS1/16SS560J

R 291
R 294
R 303
R 304
R 305

RS1/16SS560J
RS1/16SS471J
RS1/16SS123J
RS1/16SS123J
RS1/16SS102J

R 306
R 307
R 308
R 309
R 310

RS1/16SS472J
RS1/16SS102J
RS1/16SS472J
RS1/16SS473J
RS1/16SS472J

R 311
R 312
R 313
R 701
R 702

RS1/16SS472J
RS1/16SS472J
RS1/16SS472J
RS1/16SS101J
RS1/16SS101J

R 706

RS1/16SS221J

CAPACITORS

C 104
C 203
C 209
C 210
C 211

CKSQYB475K6R3
CKSSYB104K10
CKSRYB104K16
CKSSYB104K10
CKSSYB104K10

C 212
C 213
C 214
C 215
C 216

CKSSYB104K10
CKSSYB332K50
CKSSYB473K16
CKSSYB104K10
CKSSYB182K50

C 217
C 218
C 219
C 220
C 221

CCSSCH560J50
CCSSCH4R0C50
CKSSYB104K10
CKSSYB104K10
CKSSYB104K10

C 222
C 223
C 224
C 225
C 228

CKSSYB104K10
CCSSCH680J50
CCSSCH470J50
CKSSYB103K16
CCSSCH270J50

A

CAPACITORS

C 104
C 110
C 111
C 203
C 205

CKSQYB475K6R3
CKSSYB104K10
CKSSYB103K16
CKSSYB104K10
CKSRYB105K10

B

C 214
C 215
C 216
C 217
C 218

CKSSYB473K16
CKSSYB104K10
CKSSYB152K50
CCSSCH390J50
CCSSCH5R0C50

C

C 219
C 220
C 221
C 222
C 223

CKSSYB104K10
CKSSYB104K10
CKSSYB104K10
CKSSYB104K10
CCSSCH680J50

C 224
C 225
C 228
C 229
C 233

CCSSCH470J50
CKSSYB103K16
CCSSCH180J50
CKSSYB104K10
CKSSYB103K16

D

C 236
C 238
C 299
C 302
C 303

CKSSYB104K10
CKSRYB104K16
CKSSYB104K10
CKSSYB102K50
CKSSYB102K50

C 304
C 305
C 306
C 307
C 308

CKSSYB223K16
CKSSYB104K10
CKSSYB104K10
CKSRYB105K10
CKSRYB105K10

C 710

CKSSYB102K50

D

Unit Number: CWX4023

Unit Name : CD Core Unit(S11.6STD)

MISCELLANEOUS

IC 201 IC PE5791A
IC 301 Driver IC BD8223EFV
Q 101 Transistor 2SAR502UB
Q 102 Chip Digital Transistor LTA123JUB
X 201 Ceramic Resonator 16.934 MHz CSS1603

S 901 Lever Switch(HOME) CSN1090
S 903 Spring Switch(DSCSNS) CSN1081
CN101 Connector CKS4808
CN701 Connector CKS6146

Circuit Symbol and No.**Part No.**

C 229
 C 233
 C 236
 C 238
 C 299

CKSSYB104K10
 CKSSYB103K16
 CKSSYB104K10
 CKSRYB104K16
 CKSSYB104K10

C 302
 C 303
 C 304
 C 305
 C 306

CKSSYB102K50
 CKSSYB102K50
 CKSSYB223K16
 CKSSYB104K10
 CKSSYB104K10

C 307
 C 308
 C 710

CKSRYB105K10
 CKSRYB105K10
 CKSSYB102K50

A

B

C

D

E

F