

■

■

■

■

■

# 9. EXPLODED VIEWS AND PARTS LIST

NOTES : • Parts marked by "\*" are generally unavailable because they are not in our Master Spare Parts List.

• The ⚠ mark found on some component parts indicates the importance of the safety factor of the part.

Therefore, when replacing, be sure to use parts of identical designation.

• Screw adjacent to ∇ mark on the product are used for disassembly.

• For the applying amount of lubricants or glue, follow the instructions in this manual.

(In the case of no amount instructions, apply as you think it appropriate.)

## 9.1 PACKING

A

B

C

D

E

F

AVD-W7900/XZ/UC

18

1

2

3

4

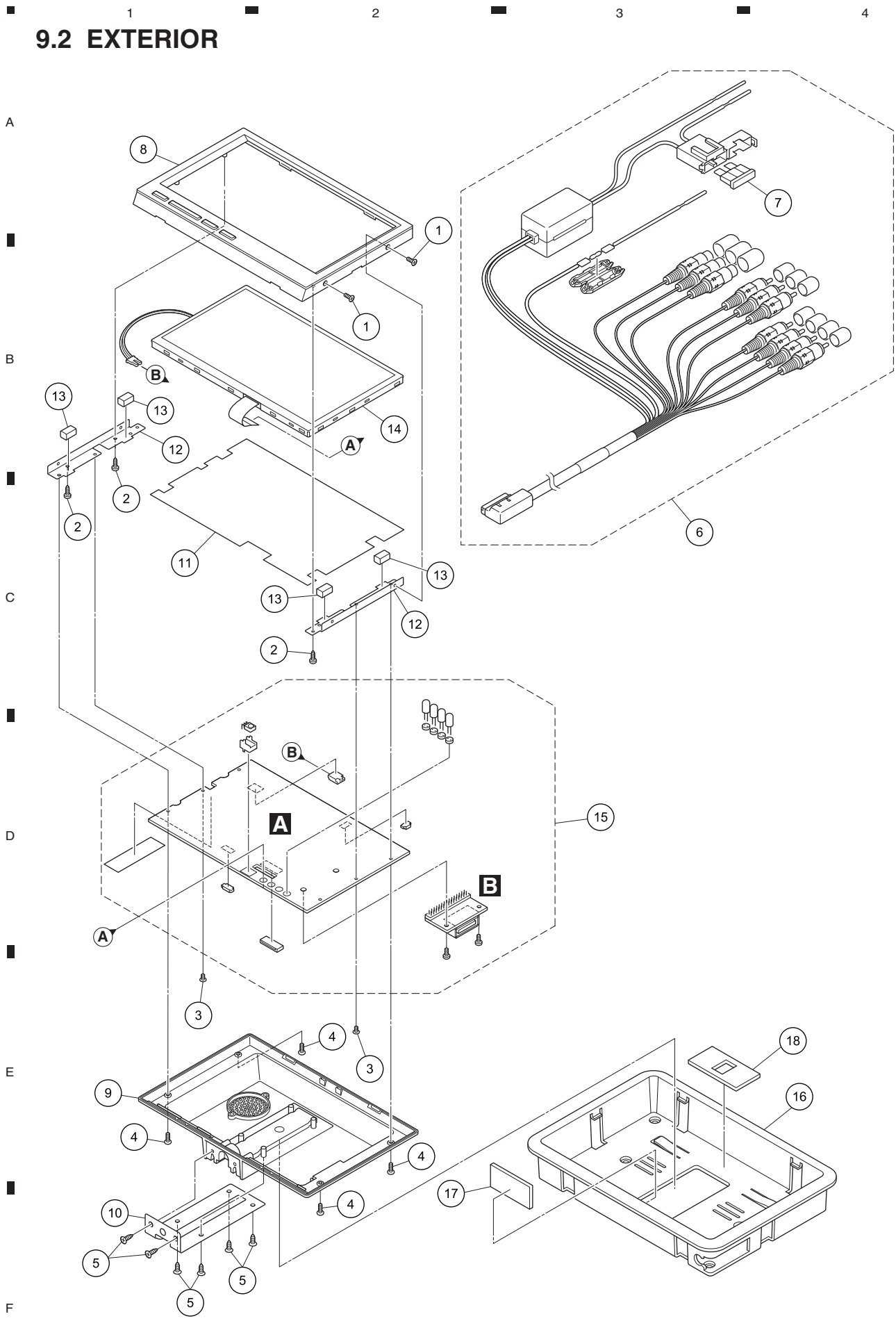
■

## PACKING SECTION PARTS LIST

<u>Mark No.</u>	<u>Description</u>	<u>Part No.</u>	<u>Mark No.</u>	<u>Description</u>	<u>Part No.</u>
1	Owner's Manual(UC)	GCU00069-A-R	5	Cord Assy	GCC00279-A-R
	Owner's Manual(EW5)	GCU00070-A-R			
2	Protector	GCK00225-A-R	6	Sheet	GCU00059-A-R
3	Unit Box(UC)	GCK00250-A-R	7	Screw	CSC00054-A-R
	Unit Box(EW5)	GCK00248-A-R	8	Sheet	GCU00058-A-R
4	Contain Box(UC)	GCK00251-A-R			
	Contain Box(EW5)	GCK00249-A-R			

<b>Part No.</b>	<b>Language</b>
GCU00069-A	English, Spanish, German, French, Italian, Dutch, Russian
GCU00070-A	English, French

# 9.2 EXTERIOR



## EXTERIOR SECTION PARTS LIST

<u>Mark No.</u>	<u>Description</u>	<u>Part No.</u>
1	Screw	CSC00086-A-R
2	Screw	CSC00042-A-R
3	Screw	CSC00086-A-R
4	Screw	CSC00080-A-R
5	Screw	CSC00138-A-R
6	Cord Assy	GCC00279-A-R
⚠ 7	Fuse(4 A)	CEK1001
8	Grille Assy	GCE00572-A-R
9	Cover	GCE00565-A-R
10	Holder	GCM00182-A-R
11	Insulator	CTA00205-A-R
12	Holder	GCM00183-A-R
13	Cushion	CTA00185-A-R
14	LCD	GCL00047-A-R
15	PCB Unit	CSK762-C-R
16	Bezel	GCE00558-A-R
17	Cushion	CTA00242-A-R
18	Cushion	CTA00243-A-R

A

B

C

D

E

F

# 12. ELECTRICAL PARTS LIST

**NOTE:**

- Parts whose parts numbers are omitted are subject to being not supplied.
- The part numbers shown below indicate chip components.

Chip Resistor

RS1/○S○○○○J,RS1/○○S○○○○J

Chip Capacitor (except for CQS.....)

CKS....., CCS....., CSZS.....

- The  $\triangle$  mark found on some component parts indicates the importance of the safety factor of the part. Therefore, when replacing, be sure to use parts of identical designation.
- Meaning of the figures and others in the parentheses in the parts list.

Example) IC 301 is on the point (face A, 91 of x-axis, and 111 of y-axis) of the corresponding PC board.

IC 301 (A, 91, 111) IC NJM2068V

<u>Circuit Symbol and No.</u>	<u>Part No.</u>	<u>Circuit Symbol and No.</u>	<u>Part No.</u>
<b>Unit Number :</b>		Q 1	Transistor PMBT3904L
<b>Unit Name : Main PCB</b>		Q 2	Transistor PMBT3904L
<b>Unit Number :</b>		Q 3	Transistor PMBT3904L
<b>Unit Name : Connector PCB</b>		Q 4	Digital Transistor DTC144EUA
		Q 5	Transistor 2SC4081
		Q 6	Transistor PMBT3906
		Q 7	Transistor PMBT2222A
		Q 8	Transistor PMBT3906
		Q 9	Transistor PMBT3904L
		Q 10	Transistor PMBT3904L
<b>A</b>		Q 11	Transistor PMBT3904L
<b>Unit Number :</b>		Q 13	Transistor PMBT2222A
<b>Unit Name : Main PCB</b>		Q 14	Transistor PMBT2907A
		Q 15	Transistor PMBT3904L
		Q 16	Transistor PMBT3904L
<b>MISCELLANEOUS</b>		Q 18	Transistor PMBT3904L
U 1 IC GM78L05A		Q 19	Transistor 2SD1898
U 2 IC PH74HC14D		Q 20	Digital Transistor DTC144EUA
U 3 IC APM9435		Q 21	Transistor 2SC4081
U 4 IC APM9435		D 2	Diode CDI00001-A-R
U 5 IC AX2596U		D 4	LED CLE00013-A-R
U 6 IC AIC1117A-33PY		D 5	LED CLE00013-A-R
U 7 IC AIC1117A-33PY		D 6	LED CLE00013-A-R
U 8 IC AIC1117A-18PY		D 7	LED CLE00013-A-R
U 9 IC TW8806B		D 9	LED CLE00007-A-R
U 10 IC PT2313L-20		D 10	LED CLE00007-A-R
U 12 IC BA3308F		D 11	LED CLE00007-A-R
U 13 IC 78D09AL		D 12	LED CLE00007-A-R
U 14 IC PH74HC14D		D 13	LED CLE00007-A-R
U 15 IC BA4560F		D 14	Diode UDZ5R1(B)
U 16 IC SM5964		D 15	Diode UDZ5R1(B)
U 17 IC APLUSAF24BC16		D 16	Diode UDZ5R6(B)
U 18 IC LX1692A		D 17	Diode CDI00035-A-R
U 19 IC APM4532KC-TRL		D 20	Diode DAP202U
U 20 IC APM4532KC-TRL		D 21	Diode 1SS355
U 21 IC APM9435		D 22	Diode UDZS8R2(B)
U 22 IC NJM2794RB2		D 24	Diode UDZS8R2(B)
U 23 IC NJM2794RB2		D 25	Diode RB751V-40
U 24 IC ADA4430		D 26	Diode UMN10N
U 25 IC AST-01		D 1001	Zener Diode CDI00039-A-R
U 26 Transistor EMD2		D 1002	Zener Diode CDI00039-A-R
U 27 Transistor IMH23			

	1	2	3	4
	<u>Circuit Symbol and No.</u>	<u>Part No.</u>	<u>Circuit Symbol and No.</u>	<u>Part No.</u>
	D 1003 Zener Diode	CDI00039-A-R	ZD3 Diode	CDI00038-A-R
	D 1004 Zener Diode	CDI00032-A-R	ZD5 Diode	CDI00038-A-R
	D 1005 Zener Diode	CDI00032-A-R	ZD6 Diode	CDI00038-A-R
A	D 1006 Zener Diode	CDI00032-A-R	IR 1	CIR00002-A-R
	D 1007 Zener Diode	CDI00032-A-R		
	D 1008 Zener Diode	CDI00032-A-R		
	D 1009 Zener Diode	CDI00032-A-R		
	D 1010 Zener Diode	CDI00032-A-R		
	D 1011 Zener Diode	CDI00032-A-R		
	D 1012 Zener Diode	CDI00032-A-R		
	D 1013 Zener Diode	CDI00032-A-R		
	D 2002 Diode	CDI00037-A-R		
	D 2003 Diode	CDI00037-A-R		
	ZNR1 Diode	CNI00001-A-R		
B	L 1 Inductor	CPL00045-A-R		
	L 2 Coil	CPL00104-A-R		
	L 3 Coil	CPL00008-A-R		
	L 4	RS1/10S0R0J		
	L 5	RS1/10S0R0J		
	L 6	RS1/10S0R0J		
	L 7 Coil	CPL00058-A-R		
	L 8 Inductor	CPL00045-A-R		
	L 9 Inductor	CPL00045-A-R		
	L 10 Inductor	CPL00010-A-R		
C	L 11 Inductor	CPL00010-A-R		
	L 12 Inductor	CPL00010-A-R		
	L 13 Inductor	CPL00010-A-R		
	L 14 Inductor	CPL00010-A-R		
	L 15 Inductor	CPL00010-A-R		
	L 16 Inductor	CPL00010-A-R		
	L 17 Inductor	CPL00010-A-R		
	L 18 Inductor	CPL00010-A-R		
	L 19 Inductor	CPL00045-A-R		
	L 20 Inductor	CPL00010-A-R		
D	L 21 Inductor	CPL00045-A-R		
	L 22	RS1/10S0R0J		
	L 23	RS1/10S0R0J		
	L 25 Inductor	CPL00045-A-R		
	L 26	RS1/10S470J		
	H 2 Spacer	CSC00149-A-R		
	H 8 Spacer	CSC00149-A-R		
	SW1 Switch	CSW00022-A-R		
	SW2 Switch	CSW00022-A-R		
	SW3 Switch	CSW00022-A-R		
	SW4 Switch	CSW00022-A-R		
	SW5 Switch	CSW00022-A-R		
E	VR1	CVR00002-A-R		
	VR2	CVR00003-B-R		
	VR3	CVR00003-B-R		
	VR4	CVR00002-A-R		
	CON1 Connector	GCN00025-A-R		
	F 1001 Connector	GCN00069-A-R		
	J 4 Connector	GCN00104-A-R		
	LS1 Buzzer	GCS00005-A-R		
	TR1 Transformer	GCT00015-A-R		
	Y 1 Oscillator	CXL00018-A-R		
	Y 2 Oscillator	CXL00026-A-R		
F	△F1 Fuse	CAA00007-A-R		
	ZD1 Diode	CDI00038-A-R		
	ZD2 Diode	CDI00038-A-R		

**RESISTORS**

R 2	RS1/16S153J
R 3	RS1/16S103J
R 4	RS1/16S103J
R 5	RS1/16S471J
R 6	RS1/16S472J
R 7	RS1/16S823J
R 8	RS1/16S512J
R 9	RS1/16S472J
R 10	RS1/16S302J
R 11	RS1/16S102J
R 12	RS1/16S2701F
R 13	RS1/10S750J
R 14	RS1/10S750J
R 15	RS1/16S7501F
R 16	RS1/16S2702F
R 17	RS1/16S471J
R 18	RS1/16S471J
R 19	RS1/16S471J
R 20	RS1/16S101J
R 21	RS1/16S101J
R 22	RS1/16S330J
R 23	RS1/16S330J
R 24	RS1/16S330J
R 25	RS1/16S330J
R 26	RS1/16S105J
R 28	RS1/16S242J
R 29	RS1/16S0R0J
R 30	RS1/16S242J
R 33	RS1/16S0R0J
R 34	RS1/16S242J
R 35	RS1/16S0R0J
R 36	RS1/16S242J
R 38	RS1/16S8200F
R 39	RS1/16S8200F
R 40	RS1/16S471J
R 41	RS1/16S223J
R 42	RS1/16S223J
R 43	RS1/16S181J
R 44	RS1/16S0R0J
R 47	RS1/16S0R0J
R 48	RS1/16S682J
R 49	RS1/16S0R0J
R 50	RS1/16S331J
R 51	RS1/16S151J
R 52	RS1/16S471J
R 53	RS1/16S103J
R 54	RS1/16S473J
R 55	RS1/16S473J
R 56	RS1/16S102J
R 57	RS1/16S473J
R 58	RS1/16S473J
R 59	RS1/16S2202F
R 60	RS1/16S1502F
R 61	RS1/16S0R0J

5		6		7		8	
<u>Circuit Symbol and No.</u>		<u>Part No.</u>		<u>Circuit Symbol and No.</u>		<u>Part No.</u>	
R 62		RS1/16S103J		R 130		RS1/16S152J	
R 63		RS1/16S471J		R 131		RS1/16S221J	
R 64		RS1/16S153J		R 132		RS1/16S103J	A
R 65		RS1/16S331J		R 133		RS1/16S103J	
R 66		RS1/16S224J		R 134		RS1/16S100J	
R 67		RS1/16S102J		R 135		RS1/16S223J	
R 68		RS1/16S223J		R 136		RS1/16S4022F	
R 70		RS1/16S181J		R 137		RS1/16S124J	
R 71		RS1/16S3R3J		R 139		RS1/16S102J	
R 72		RS1/16S682J		R 141		RS1/16S103J	
R 73		RS1/16S0R0J		R 142		RS1/16S82R0F	
R 74		RS1/16S203J		R 143		CKSRYB103K50	
R 75		RS1/16S334J		R 145		RS1/16S471J	
R 77		RS1/16S822J		R 146		RS1/16S472J	B
R 78		RS1/16S203J		R 147		RS1/16S331J	
R 79		RS1/16S363J		R 148		RS1/16S101J	
R 80		RS1/16S0R0J		R 150		RS1/16S0R0J	
R 81		RS1/16S472J		R 151		RS1/16S0R0J	
R 82		RS1/16S2001F		R 152		RS1/16S103J	
R 85		RS1/16S274J		R 155		RS1/16S103J	
R 86		RS1/16S683J		R 156		RS1/16S0R0J	
R 87		RS1/16S103J		R 157		RS1/16S750J	
R 88		RS1/16S473J		R 160		RS1/16S123J	
R 89		RS1/16S331J		R 162		RS1/16S123J	
R 90		RS1/16S472J		R 166		RS1/16S102J	C
R 91		RS1/16S472J		R 167		RS1/16S0R0J	
R 92		RS1/16S561J		R 168		RS1/16S0R0J	
R 93		RS1/16S223J		R 169		RS1/16S0R0J	
R 94		RS1/16S101J		R 170		RS1/16S0R0J	
R 95		RS1/16S331J		R 171		RS1/16S0R0J	
R 96		RS1/16S472J		R 172		RS1/16S0R0J	
R 97		RS1/16S473J		R 173		RS1/16S223J	
R 98		RS1/16S330J		R 174		RS1/16S102J	
R 99		RS1/16S472J		R 175		RS1/16S0R0J	
R 100		RS1/16S561J		R 176		RS1/16S181J	
R 101		RS1/16S223J		R 177		RS1/16S223J	D
R 102		RS1/16S101J		R 178		RS1/16S102J	
R 103		RS1/16S331J		R 179		RS1/16S181J	
R 104		RS1/16S472J		R 180		RS1/16S223J	
R 105		RS1/16S473J		R 181		RS1/16S102J	
R 106		RS1/16S472J		R 183		RS1/16S103J	
R 107		RS1/16S561J		R 184		RS1/16S8200F	
R 108		RS1/16S223J		R 185		RS1/16S473J	
R 109		RS1/16S101J		R 186		RS1/16S473J	
R 110		RS1/16S222J		R 187		RS1/16S103J	
R 111		RS1/16S103J		R 188		RS1/16S103J	E
R 112		RS1/16S473J		R 189		RS1/16S473J	
R 116		RS1/16S102J		R 191		RS1/16S330J	
R 118		RS1/16S102J		R 192		RS1/16S103J	
R 119		RS1/16S102J		R 193		RS1/16S473J	
R 120		RS1/16S472J		R 194		RS1/16S0R0J	
R 121		RS1/16S102J		R 1001		RAB4C472J	
R 122		RS1/16S0R0J		R 1002		RAB4C330J	
R 123		RS1/16S101J		R 1003		RAB4C330J	
R 124		RS1/16S472J		R 1004		RAB4C330J	
R 125		RS1/16S0R0J		R 1005		RAB4C472J	
R 126		RS1/16S0R0J		R 1006		RAB4C472J	F
R 127		RS1/16S102J		R 1007		RAB4C472J	
R 128		RS1/16S103J		R 1008		RAB4C472J	
R 129		RS1/16S103J		R 1009		RAB4C472J	

1	2	3	4
<u>Circuit Symbol and No.</u>	<u>Part No.</u>	<u>Circuit Symbol and No.</u>	<u>Part No.</u>
<b>CAPACITORS</b>			
		C 60	CCA00089-A-R
		C 61	CKSRYB104K50
		C 62	CKSRYB104K50
A	C 1		
	C 3	C 63	CKSRYB104K50
	C 4	C 64	CKSRYB104K50
	C 5	C 65	CKSRYB104K50
	C 6	C 66	CKSYF106Z16
		C 67	CKSRYB104K50
	C 7		
	C 9	C 68	CKSYF106Z16
	C 10	C 69	CCA00093-A-R
	C 11	C 70	CKSRYB104K50
	C 12	C 71	CKSRYB104K50
		C 72	CKSRYB104K50
	C 13		
B	C 14	C 73	CKSRYB104K50
	C 15	C 74	CKSRYB104K50
	C 16	C 75	CKSYF106Z16
	C 17	C 76	CKSYF106Z16
		C 77	CKSRYB104K50
	C 18		
	C 19	C 78	CCA00091-A-R
	C 20	C 79	CCA00094-A-R
	C 21	C 80	CKSYF106Z16
	C 22	C 81	CCA00093-A-R
		C 84	CKSQYF225Z16
	C 23		
	C 24	C 85	CKSYF106Z16
C	C 25	C 86	CCA00093-A-R
	C 26	C 87	CKSQYF225Z16
	C 27	C 91	CKSQYF225Z16
		C 92	CKSQYF225Z16
	C 28		
	C 29	C 93	CKSRYB102K50
	C 30	C 94	CKSRYB102K50
	C 31	C 96	CKSQYF225Z16
	C 32	C 97	CCA00091-A-R
		C 98	CKSQYF225Z16
	C 33		
	C 34	C 99	CKSYF106Z16
	C 35	C 100	CKSYF106Z16
D	C 36	C 101	CKSRYB474K16
	C 37	C 102	CCA00091-A-R
		C 103	CKSRYB104K50
	C 38		
	C 39	C 104	CKSRYB104K50
	C 40	C 105	CKSRYB104K50
	C 41	C 106	CKSRYB104K50
	C 42	C 107	CKSYF106Z16
		C 108	CCA00091-A-R
	C 43		
	C 44	C 109	CCSRCH221J50
	C 45	C 110	CKSRYB102K50
E	C 46	C 111	CKSRYB104K50
	C 47	C 112	CKSYF106Z16
		C 113	CKSRYB104K50
	C 48		
	C 49	C 114	CKSRYF105Z16
	C 50	C 115	CCSRCH331J50
	C 51	C 116	CCSRCH101J50
	C 52	C 117	CKSYF106Z16
		C 118	CKSRYB102K50
	C 53		
	C 54	C 119	CCA00091-A-R
	C 55	C 120	CKSRYB104K50
	C 56	C 121	CKSYF106Z16
F	C 57	C 122	CCSRCH331J50
		C 123	CCSRCH101J50
	C 58		
	C 59	C 124	CCSRCH101J50
		C 125	CKSRYB104K50

5	6	7	8
<u>Circuit Symbol and No.</u>	<u>Part No.</u>	<u>Circuit Symbol and No.</u>	<u>Part No.</u>
C 126	CKSRYP104K50	C 188	CCSRCH101J50
C 127	CKSRYP104K50	C 189	CKSRYP472K50
C 128	CKSRYP104K50	C 190	CKSRYP183K50
C 129	CKSYF225Z25	C 191	CKSYF225Z25
C 130	CKSRYP104K50	C 192	CKSRYP103K50
C 131	CKSRYP104K50	C 193	CKSRYP103K50
C 132	CKSRYP104K50	C 194	CKSYF106Z16
C 133	CKSRYP104K50	C 195	CKSRYP104K50
C 134	CKSRYP104K50	C 197	CCA00039-A-R
C 135	CKSRYP104K50	C 198	CKSRYP102K50
C 136	CKSRYP104K50	C 199	CPC00146-A-R
C 137	CKSRYP104K50	C 200	CKSRYP104K50
C 138	CKSYF225Z25	C 201	CCA00039-A-R
C 139	CKSRYP104K50	C 202	CCSRCH330J50
C 140	CKSRYP104K50	C 207	CKSRYP104K50
C 141	CKSRYP104K50	C 208	CCA00093-A-R
C 142	CKSRYP104K50	C 209	CKSRYP104K50
C 143	CCSRCH101J50	C 211	CCSRCH101J50
C 144	CKSYF106Z16	C 212	CCSRCH101J50
C 145	CKSYF106Z16	C 214	CCSRCH330J50
C 146	CKSYF106Z16	C 215	CPC00006-A-R
C 147	CPC00145-A-R	C 218	CKSRYP104K50
C 148	CPC00006-A-R	C 219	CCA00090-A-R
C 149	CKSRYP104K50	C 220	CKSQYF225Z16
C 150	CKSRYP104K50	C 221	CKSQYF225Z16
C 151	CCSRCH101J50	C 222	CKSQYF225Z16
C 152	CKSYF106Z16	C 223	CKSQYF225Z16
C 153	CKSRYP104K50	C 224	CPC00006-A-R
C 154	CKSRYP104K50	C 225	CKSQYF225Z16
C 155	CCSRCH101J50	C 226	CKSQYF225Z16
C 156	CKSYF106Z16	C 227	CKSQYF225Z16
C 157	CKSYF106Z16	C 228	CKSQYF225Z16
C 158	CKSYF106Z16	C 229	CPC00006-A-R
C 159	CCSRCH101J50	C 230	CKSRYP103K50
C 160	CKSYF106Z16	C 231	CKSRYP103K50
C 161	CCSRCH101J50	C 232	CKSRYP103K50
C 162	CKSYF106Z16	C 233	CKSRYP103K50
C 163	CKSYF106Z16	C 234	CKSRYP103K50
C 164	CCSRCH101J50	C 250	CKSRYP104K50
C 165	CKSRYP104K50	C 251	CKSRYP105Z16
C 166	CKSYF106Z16		
C 167	CCSRCH180J50		
C 168	CCSRCH180J50		
C 170	CKSRYP104K50		
C 171	CKSRYP104K50		
C 172	CCSRCH331J50		
C 173	CKSRYP104K50		
C 175	CKSYF106Z16		
C 176	CKSRYP105Z16		
C 177	CKSRYP104K50		
C 178	CCSRCH101J50		
C 179	CKSRYP104K50		
C 180	CKSRYP332K50		
C 181	CKSYF105Z16		
C 182	CPC00006-A-R		
C 183	CKSRYP104K50		
C 184	CCSRCH221J50		
C 185	CKSRYP104K50		
C 186	CPC00006-A-R		
C 187	CKSRYP104K50		

**B**  
**Unit Number :**  
**Unit Name : Connector PCB**

**MISCELLANEOUS**

L 1	Coil	CPL00101-A-R
⚠F1	Fuse	CAA00014-A-R
⚠F2	Fuse	CAA00014-A-R
⚠F3	Fuse	CAA00014-A-R
J 1	Connector	GCN00118-A-R
J 3	Connector	GAB00014-A-R

**RESISTORS**

R 1	Coil	CPL00102-A-R
R 2	Coil	CPL00102-A-R
R 3	Coil	CPL00102-A-R
R 4	Coil	CPL00102-A-R
R 5	Coil	CPL00102-A-R

1  
**Circuit Symbol and No.**

2  
**Part No.**

3

4

A	R 6	Coil	CPL00102-A-R
	R 7	Coil	CPL00102-A-R
	R 8	Coil	CPL00102-A-R
	R 9	Coil	CPL00102-A-R
	R 10	Coil	CPL00102-A-R
	R 11	Coil	CPL00102-A-R
	R 12	Coil	CPL00102-A-R
	R 15		RS1/16S0R0J
	R 16		RS1/16S0R0J
	R 17		RS1/16S0R0J
	R 18		RS1/16S0R0J
	R 20		RS1/16S0R0J

**CAPACITORS**

B	C 1		CCSRCH101J50
	C 2		CCSRCH101J50
	C 3		CCSRCH101J50
	C 4		CCSRCH101J50
	C 5		CCSRCH101J50
	C 6		CCSRCH101J50
	C 7		CCSRCH330J50
	C 8		CCSRCH330J50
	C 9		CCSRCH330J50
	C 10		CCSRCH101J50
C	C 11		CCSRCH101J50
	C 12		CCSRCH101J50
	C 13		CCSRCH101J50

D

E

F