

9.1 PACKING

1

2

3

4

A

15

14

X6500BT/XNUC
X5500BT/XNEW5
X6550BT/XNES
X6590BT/XNID

5

4

3

B

X65BT/XNUC

2

A

5

X6500BT/XNUC
X5500BT/XNEW5
X6550BT/XNES
X6590BT/XNID

C

X5500BT/XNEW5

17

19

X6500BT/XNUC
X5500BT/XNEW5
X6550BT/XNES
X6590BT/XNID

14

D

X5500BT/XNEW5

12

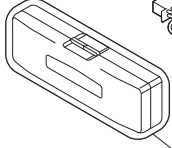
A

X65BT/XNUC
X6500BT/XNUC
X6550BT/XNES
X6590BT/XNID

X5500BT/XNEW5

1

1



16

X5500BT/XNEW5
X6550BT/XNES
X6590BT/XNID

6

E

X65BT/XNUC
X6500BT/XNUC

11

X65BT/XNUC
X6500BT/XNUC

9

13

12

10

X65BT/XNUC
X6500BT/XNUC
X6550BT/XNES
X6590BT/XNID

18

X65BT/XNUC
X6500BT/XNUC
X6550BT/XNES
X6590BT/XNID

15

X6500BT/XNUC
X5500BT/XNEW5
X6550BT/XNES
X6590BT/XNID

F

1

2

3

4

(1) PACKING SECTION PARTS LIST

<u>Mark No.</u>	<u>Description</u>	<u>Part No.</u>	<u>Mark No.</u>	<u>Description</u>	<u>Part No.</u>
1	Cord Assy	See Contrast table (2)	15	Contain Box	See Contrast table (2)
2	Polyethylene Bag	See Contrast table (2)			
3	Protector	See Contrast table (2)	16	Case Assy	See Contrast table (2)
4	Protector	See Contrast table (2)	17	IM CD ROM	See Contrast table (2)
5	Protector	See Contrast table (2)	18	Card Remote Control Unit	See Contrast table (2)
			19-1	Owner's Manual	See Contrast table (2)
6	Microphone Assy	CPM1083	*	19-2 Warranty Card	See Contrast table (2)
7	Holder	CZN7192			
8	Cushion	CZN7193		19-3 Quick Start Guide	See Contrast table (2)
9	Screw	See Contrast table (2)		19-4 Installation Manual	See Contrast table (2)
10	Polyethylene Bag	See Contrast table (2)	*	19-5 Caution Card	See Contrast table (2)
			*	19-6 Caution Card	See Contrast table (2)
11	Screw	See Contrast table (2)	*	19-7 Caution Card	See Contrast table (2)
12	Handle	QNC3021			
13	Screw	See Contrast table (2)	*	19-8 Service Network	See Contrast table (2)
14	Unit Box	See Contrast table (2)			

(2) CONTRAST TABLE

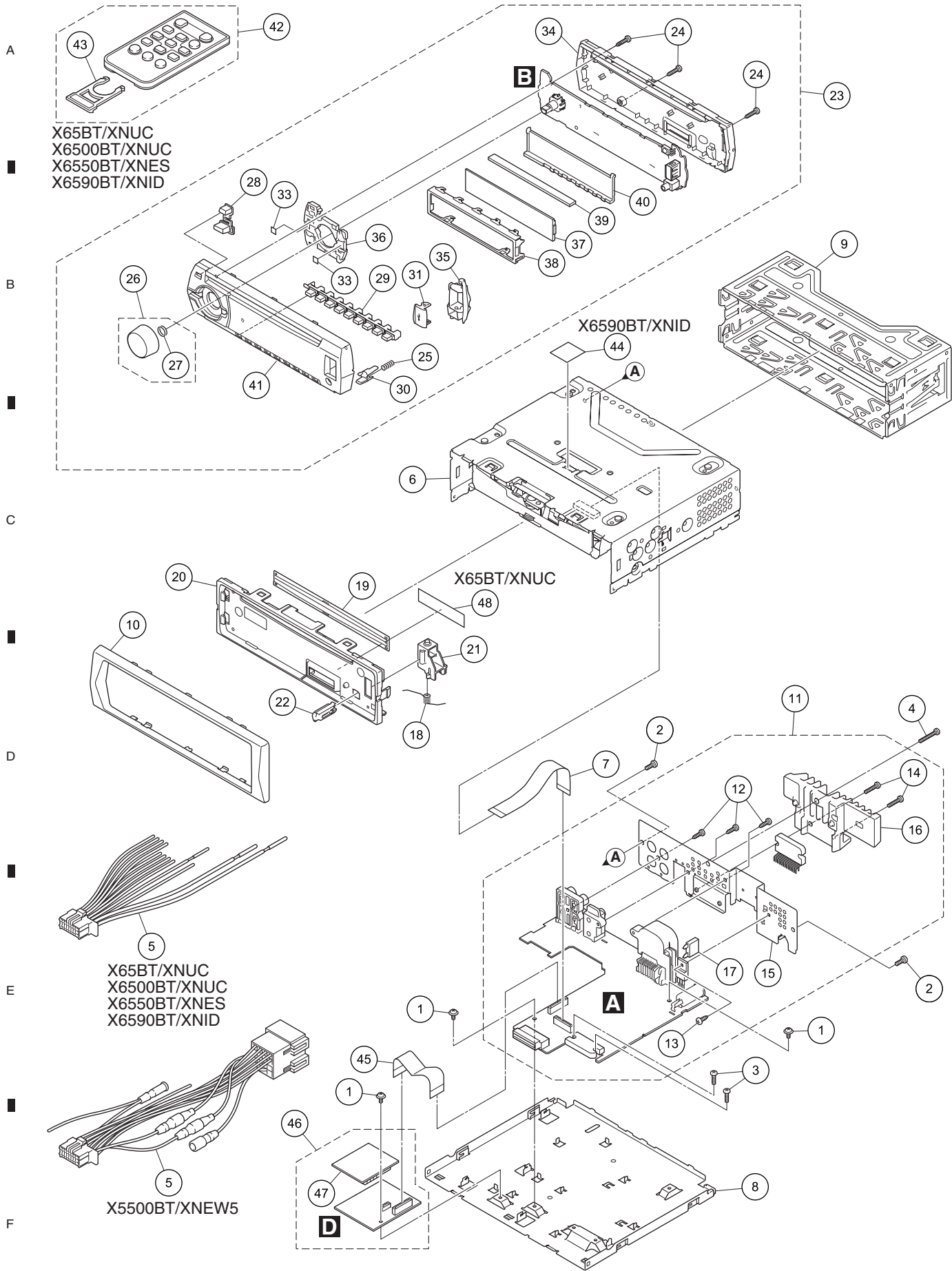
DEH-X65BT/XNUC, DEH-X6500BT/XNUC, DEH-X5500BT/XNEW5, DEH-X6550BT/XNES and DEH-X6590BT/XNID are constructed the same except for the following:

Mark	No.	Description	DEH-X65BT/ XNUC	DEH-X6500BT/ XNUC	DEH-X5500BT/ XNEW5	DEH-X6550BT/ XNES	DEH-X6590BT/ XNID
	1	Cord Assy	CDP1480	CDP1480	QDP3014	CDP1480	CDP1480
	2	Polyethylene Bag	CEG1173	CEG1173	QEG3001	CEG3001	QEG3001
	3	Protector	CHP4103	Not used	Not used	Not used	Not used
	4	Protector	CHP4104	Not used	Not used	Not used	Not used
	5	Protector	Not used	CHP4594	CHP4594	CHP4594	CHP4594
	9	Screw	BPZ20P060FTC	BPZ20P060FTC	Not used	Not used	Not used
	10	Polyethylene Bag	CEG1160	CEG1160	Not used	CEG1160	CEG1160
	11	Screw	CRZ50P090FTC	CRZ50P090FTC	Not used	Not used	Not used
	13	Screw	TRZ50P080FTC	TRZ50P080FTC	Not used	TRZ50P080FTC	TRZ50P080FTC
	14	Unit Box	QHG3361	QHG3360	QHG3359	QHG3362	QHG3363
	15	Contain Box	QHL3361	QHL3360	QHL3359	QHL3362	QHL3363
	16	Case Assy	Not used	Not used	QXA3129	QXA3129	QXA3129
	17	IM CD ROM	Not used	Not used	QPJ3013	Not used	Not used
	18	Card Remote Control Unit	QXE1044	QXE1044	Not used	QXE1044	QXE1044
	19-1	Owner's Manual	QRD3123	QRD3123	Not used	QRD3124	QRB3246
*	19-2	Warranty Card	QRY3001	QRY3001	CRY1376	Not used	CRY1304
	19-3	Quick Start Guide	Not used	Not used	QRD3140	Not used	Not used
	19-4	Installation Manual	Not used	Not used	QRD3141	Not used	Not used
*	19-5	Caution Card	Not used	Not used	QRP3014	Not used	Not used
*	19-6	Caution Card	Not used	Not used	CRP1438	Not used	Not used
*	19-7	Caution Card	Not used	Not used	CRP1441	Not used	Not used
*	19-8	Service Network	Not used	Not used	Not used	Not used	CRY1305

Owner's Manual, Installation Manual

Part No.	Language
QRD3123	English, French, Spanish(Espanol)
QRD3124	English, Spanish(Espanol), Portuguese(B), Traditional Chinese, Arabic, Persian
QRD3140	English, French, Italian, Spanish(Espanol), German, Dutch, Russian
QRD3141	English, French, Italian, Spanish(Espanol), German, Dutch, Russian
QRB3246	English

9.2 EXTERIOR



(1) EXTERIOR SECTION PARTS LIST

<u>Mark No.</u>	<u>Description</u>	<u>Part No.</u>	<u>Mark No.</u>	<u>Description</u>	<u>Part No.</u>
1	Screw	ASZ26P050FTC	26	Knob Unit	CXE3692
2	Screw	BSZ26P060FTC	27	Spring	YBL5010
3	Screw	BSZ26P080FTC	28	Button (EJECT)	QAC3084
4	Screw	BSZ26P120FTC	29	Button (1-6)	QAC3085
5	Cord Assy	See Contrast table (2)	30	Button (DETACH)	QAC3087
6	CD Mechanism Module (S11.6)	CXK5804	31	Door	QAT3007
7	FFC	QDE3029	32	•••••	
8	Case	QNB3006	33	Sheet	QNM3060
9	Holder	QNC3020	34	Cover	QNS3415
10	Panel	QNS3417	35	Lighting Conductor	QNV3057
11	Tuner Amp Unit	See Contrast table (2)	36	Lighting Conductor	QNV3058
12	Screw	BPZ26P080FTC	37	Segment LCD (V1802)	CAW2025
13	Screw	BSZ26P060FTC	38	Holder	QNC3047
14	Screw	BSZ26P120FTC	39	Rubber Connector	QNV3053
15	Holder	QNC3053	40	Lighting Conductor	QNV3054
16	Heat Sink	See Contrast table (2)	41	Grille Unit	See Contrast table (2)
⚠ 17	Fuse (10 A)	YEK5001	42	Card Remote Control Unit	See Contrast table (2)
18	Spring	QBH3001	43	Cover	See Contrast table (2)
19	Cover	QNM3029	44	Label	See Contrast table (2)
20	Panel	QNS3416	45	FFC	QDE3028
21	Arm	QNV3025	46	BT Unit	QWM3533
22	Button	QNV3026	47	BT Module	CWX4294
23	Detachable Grille Assy	See Contrast table (2)	* 48	Seal	See Contrast table (2)
24	Screw	BPZ20P100FTC			
25	Spring	CBH2210			

(2) CONTRAST TABLE

DEH-X65BT/XNUC, DEH-X6500BT/XNUC, DEH-X5500BT/XNEW5, DEH-X6550BT/XNES and DEH-X6590BT/XNID are constructed the same except for the following:

Mark	No.	Description	DEH-X65BT/ XNUC	DEH-X6500BT/ XNUC	DEH-X5500BT/ XNEW5	DEH-X6550BT/ XNES	DEH-X6590BT/ XNID
	5	Cord Assy	CDP1480	CDP1480	QDP3014	CDP1480	CDP1480
	11	Tuner Amp Unit	QWM3432	QWM3431	QWM3430	QWM3433	QWM3434
	16	Heat Sink	QNR3010	QNR3010	QNR3010	QNR3002	QNR3002
	23	Detachable Grille Assy	QXA3701	QXA3700	QXA3699	QXA3702	QXA3703
	41	Grille Unit	QXA3676	QXA3675	QXA3674	QXA3677	QXA3678
	42	Card Remote Control Unit	QXE1044	QXE1044	Not used	QXE1044	QXE1044
	43	Cover	CNS7068	CNS7068	Not used	CNS7068	CNS7068
	44	Label	Not used	Not used	Not used	Not used	CNN3533
*	48	Seal	CAN3984	Not used	Not used	Not used	Not used

9.3 CD MECHANISM MODULE

A

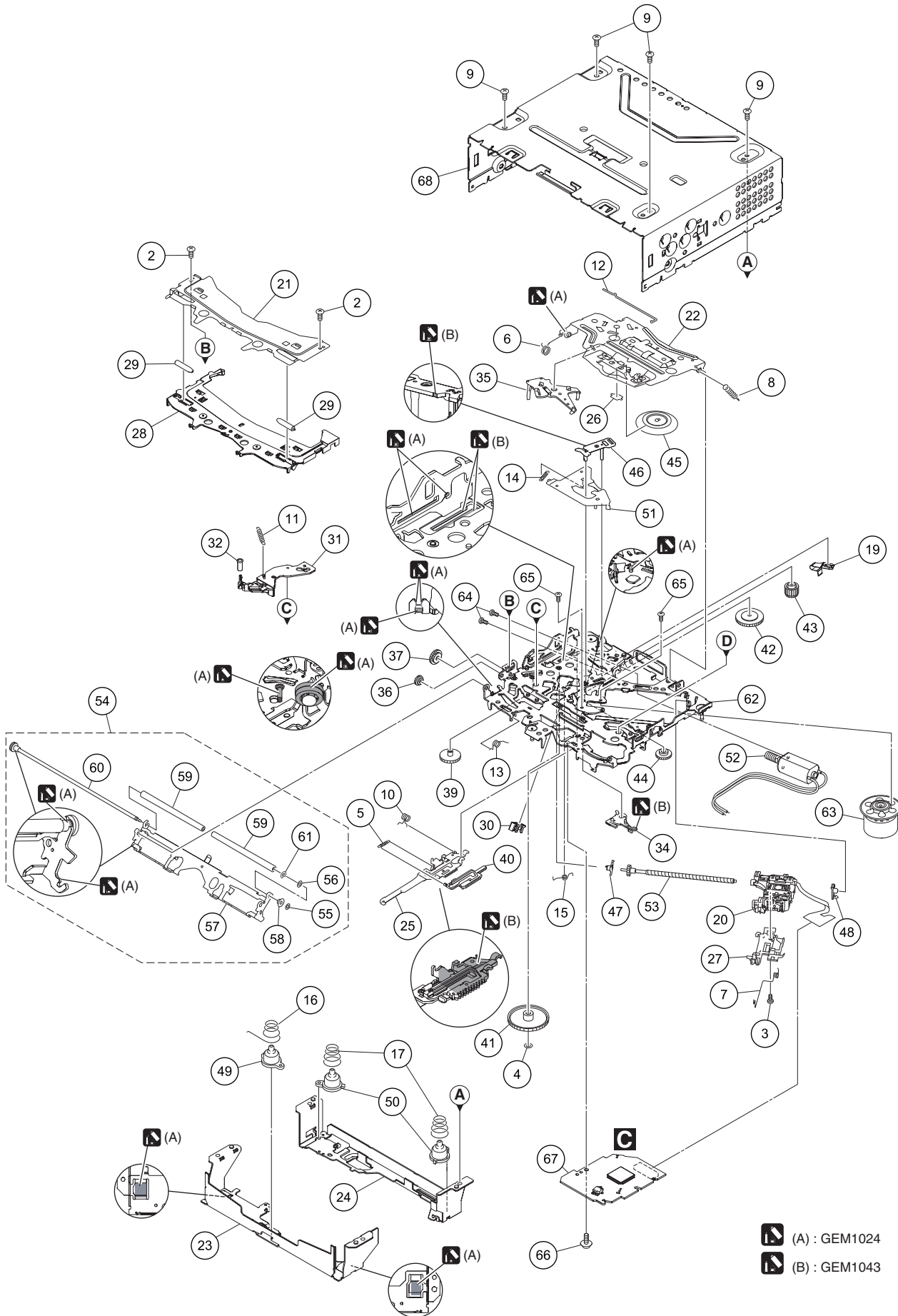
B

C

D

E

F



(A) : GEM1024
 (B) : GEM1043

DEH-X65BT/XNUC

CD MECHANISM MODULE SECTION PARTS LIST

<u>Mark No.</u>	<u>Description</u>	<u>Part No.</u>	<u>Mark No.</u>	<u>Description</u>	<u>Part No.</u>
1		50	Damper	CNW1198
2	Screw	BSZ20P040FTC	51	Arm	CNW1726
3	Screw(M2 x 4)	CBA1835	52	Motor Unit(M2)(LOAD/CRG)	CXC4026
4	Washer	CBF1038	53	Screw Unit	CXC8894
5	Spring	CBH3010	54	Arm Assy	CXE5027
6	Spring	CBH2855	55	Washer	CBF1037
7	Spring	CBH2856	56	Washer	CBF1038
8	Spring	CBH2860	57	Arm	CND6242
9	Screw	BSZ26P060FTC	58	Collar	CNW2444
10	Spring	CBH3011	59	Roller	CNW1196
11	Coil Spring	CBH3095	60	Gear Unit	CXC8893
12	Spring	CBH3014	61	Washer	YE15FTC
13	Spring	CBH3015	62	Chassis Unit	CXE4528
14	Spring	CBH3016	63	Motor Unit(M1)(SPDL)	CXE2273
15	Spring	CBH3017	64	Screw	JFZ20P025FTC
16	Spring	CBH3086	65	Screw	JGZ17P022FTC
17	Spring	CBH3019	66	Screw	EBA1028
18		67	CD Core Unit (S11.6STD)	CWX4023
19	Leaf Spring	CBL1824	68	Chassis	CNA3181
20	Pickup Unit(P10.6)(Service)	CXX3556			
21	Bracket	CND4553			
22	Arm	CND4555			
23	Bracket	CND6127			
24	Bracket	CND5710			
25	Lever	CND5398			
26	Sheet	CNN3678			
27	Rack	CNV8342			
28	Guide	CNW2240			
29	Roller	CNW1172			
30	Holder	CNW1195			
31	Arm	CNW2241			
32	Roller	CNW1175			
33				
34	Arm	CNW1177			
35	Arm	CNW1178			
36	Gear	CNW1180			
37	Gear	CNW1181			
38				
39	Gear	CNW1183			
40	Rack	CNW1184			
41	Gear	CNW1185			
42	Gear	CNW1186			
43	Gear	CNW1187			
44	Gear	CNW2287			
45	Clamper	CNW1190			
46	Arm	CNW1192			
47	Holder	CNW1193			
48	Holder	CNW1194			
49	Damper	CNW1197			

12. ELECTRICAL PARTS LIST

NOTE:

- Parts whose parts numbers are omitted are subject to being not supplied.
- The part numbers shown below indicate chip components.

Chip Resistor

RS1/○S○○○○J,RS1/○○S○○○○J

Chip Capacitor (except for CQS.....)

CKS....., CCS....., CSZS.....

- The \triangle mark found on some component parts indicates the importance of the safety factor of the part. Therefore, when replacing, be sure to use parts of identical designation.
- Meaning of the figures and others in the parentheses in the parts list.

Example) IC 301 is on the point (face A, 91 of x-axis, and 111 of y-axis) of the corresponding PC board.

IC 301 (A, 91, 111) IC NJM2068V

- The expression of the unit in this manual is shown by u instead of μ . Please do not make a mistake.

<u>Circuit Symbol and No.</u>	<u>Part No.</u>	<u>Circuit Symbol and No.</u>	<u>Part No.</u>
A:DEH-X65BT/XNUC		IC 401 (A,150,91) IC	TDA7706
		IC 531 (A,93,88) IC	337S3959
B:DEH-X6500BT/XNUC		IC 551 (A,19,111) IC	BD9876EFJ
C:DEH-X5500BT/XNEW5		IC 552 (A,106,24) IC	BD2232G-G
		IC 601 (A,110,77) IC	R5S726A0D216FP
D:DEH-X6550BT/XNES		IC 671 (A,131,75) IC	S-80827CNMC-B8M
		IC 681 (A,114,94) Flash ROM Unit(A,B)	PEB040A8
E:DEH-X6590BT/XNID		(A,114,94) Flash ROM Unit(C,D,E)	PEB039A8
Unit Number : QWM3432(A)		IC 801 (A,104,18) L-MOS And Gate	TC7SET08FUS1
Unit Number : QWM3431(B)		IC 911 (A,145,28) IC	BA49183-V12
Unit Number : QWM3430(C)		IC 961 (A,131,110) IC	TPD1052F
Unit Number : QWM3433(D)		Q 251 (A,13,130) Chip Transistor	RN1910
Unit Number : QWM3434(E)		Q 252 (A,23,131) Chip Transistor	RN1910
Unit Name : Tuner Amp Unit		Q 301 (A,87,125) Chip Transistor	RN4983
Unit Number : QWM3430(C)		Q 302 (A,127,104) Transistor	LTC014YEB
Unit Name : Keyboard Unit		Q 531 (A,93,97) Transistor	LSAR523UB
Unit Number : QWM3533		Q 601 (A,93,68) Transistor	LTC014YEB
Unit Name : BT Unit		Q 751 (A,142,139) Transistor	2SD2396
Unit Number : CWX4023		Q 752 (A,142,133) Chip Transistor	RN4983
Unit Name : CD Core Unit (S11.6STD)		Q 871 (A,144,59) Transistor	2SA1577
		Q 872 (A,144,67) Transistor	LTC143EUB
		Q 941 (A,96,121) Transistor	LSCR523UB
		D 301 (A,102,125) Diode	CRG03
		D 302 (A,90,121) Diode	CRG03
		D 401 (A,158,107) Diode	RN731VN
		D 402 (A,158,100) Diode	RN731VN
		D 551 (A,22,124) Diode	CMS03
		D 552 (A,22,104) Diode	RB056L-40
		D 751 (A,138,135) Diode	RKZ8.2KG(B2)
		D 801 (A,105,15) Diode	DZ2S068C
		D 802 (A,92,17) Diode	DZ2S068C
		D 803 (A,126,15) Diode	DZ2S068C
		D 804 (A,119,14) Diode	DZ2S068C
		D 805 (A,120,14) Diode	DZ2S068C
		D 806 (A,116,13) Diode	DZ2S068C
		D 807 (A,113,13) Diode	DZ2S068C
		D 808 (A,117,13) Diode	DZ2S068C
		D 809 (A,112,13) Diode	DZ2S068C
		D 901 (A,141,127) Diode	1SR154-400
		D 902 (A,137,127) Diode	1SR154-400
MISCELLANEOUS			
IC 201 (A,101,107) LSI	PM9013A		
IC 301 (A,78,142) IC	PA2030A		

1

2

3

4

Circuit Symbol and No.**Part No.****Circuit Symbol and No.****Part No.**

D 911	(A,158,66)	Diode	CRG03
D 912	(A,161,66)	Diode	CRG03
D 941	(A,93,125)	Diode(A,B,D,E)	HZU7L(A1)
A	(A,93,125)	Diode(C)	HZU7L(C3)
L 202	(A,94,102)	Inductor	CTF1793
L 401	(A,155,104)	Chip Coil(A,B,C)	LCTAWR27J2520
	(A,155,104)	Chip Coil(D,E)	LCTAWR39J2520
L 402	(A,159,104)	Chip Coil	LCTAWR15J2520
L 403	(A,151,102)	Inductor	CTF1786
L 404	(A,146,102)	Inductor	CTF1786
L 405	(A,151,108)	Inductor(A,B)	LCYB68NJ1608
L 406	(A,147,105)	Inductor(A,B,C)	CTF1389
L 407	(A,147,107)	Chip Coil(D,E)	LCTAWR27J2520
L 408	(A,141,104)	Inductor(A,B,C)	LCTAW4R7J2520
B	(A,141,104)	Chip Coil(D,E)	LCTAW1R5J2520
L 409	(A,143,109)	Chip Coil(D,E)	LCTAWR39J2520
L 410	(A,137,94)	Chip Coil(A,B,C)	LCTAW470J2520
	(A,137,94)	Inductor(D,E)	LCTAW2R2J2520
L 413	(A,144,82)	Inductor	CTF1786
L 414	(A,153,80)	Inductor(C)	CTF1786
L 419	(A,161,95)	Inductor	CTF1786
L 420	(A,161,96)	Inductor	CTF1786
L 551	(A,30,107)	Inductor	CTH1524
L 801	(A,115,17)	Inductor	CTF1713
L 901	(A,112,141)	Choke Coil 600 uH	CTH1432
C	X 401	(A,161,88) Crystal Resonator 36.48 MHz	CSS1848
	X 601	(A,126,76) Crystal Resonator 12 MHz	CSS1847
	X 603	(A,123,92) Resonator 16.93 MHz	CSS1794
⚠	P251	(A,6,130) Fuse 3.0 A	CEK1386
P	402	(A,155,111) Surge Absorber	HSPC16701B02
VA801	(A,108,13)	Varistor	EZJP0V270RM
VA802	(A,101,13)	Varistor	EZJP0V270RM
CN701	(A,114,32)	Connector	VKN1192
CN801	(A,109,4)	Connector	CKS6452
CN971	(A,93,49)	Connector	VKN1192
JA251	(A,19,138)	Pin Jack	CKB1099
D	JA401	(A,158,129) Antenna Jack	YKS5041
	JA892	(A,42,141) Jack	YKS5035
JA901	(A,113,141)	Connector	CKM1613
⚠		Fuse 10 A	YEK5001

RESISTORS

R 251	(A,18,131)	RS1/16SS821J
R 252	(A,9,132)	RS1/16SS821J
R 253	(A,15,131)	RS1/16SS223J
R 254	(A,11,131)	RS1/16SS223J
E	R 255	(A,29,132) RS1/16SS821J
R 256	(A,19,131)	RS1/16SS821J
R 257	(A,28,131)	RS1/16SS223J
R 258	(A,21,131)	RS1/16SS223J
R 301	(A,68,127)	RS1/16SS471J
R 302	(A,82,125)	RS1/16SS471J
R 303	(A,73,127)	RS1/16SS471J
R 304	(A,78,126)	RS1/16SS471J
R 305	(A,88,127)	RS1/16SS103J
R 306	(A,89,129)	RS1/16SS102J
R 309	(A,86,121)	RS1/16SS103J
F	R 311	(A,86,123) RS1/16SS473J
	R 312	(A,99,129) RS1/16SS103J
	R 401	(A,161,106) RS1/16SS221J

R 402	(A,161,100)	RS1/16SS751J
R 403	(A,139,104) (A,B,C)	RS1/16SS391J
	(A,139,104) (D,E)	RS1/16SS331J
R 404	(A,142,99)	RS1/16SS105J
R 406	(A,154,108)	RS1/16SS105J
R 407	(A,139,96)	RS1/16SS330J
R 408	(A,137,97) (A,B,C)	RS1/16SS471J
	(A,137,97) (D,E)	RS1/16SS361J
R 409	(A,144,98) (D,E)	RS1/16SS0R0J
R 410	(A,141,91) (A,B,C)	RS1/16SS0R0J
R 411	(A,138,91) (A,B,C)	RS1/16SS681J
	(A,138,91) (D,E)	RS1/16SS391J
R 412	(A,152,78)	RS1/4SA8R2J
R 413	(A,158,78)	RS1/4SA8R2J
R 414	(A,139,87)	RS1/16SS0R0J
R 415	(A,152,80) (A,B,D,E)	RS1/16SS0R0J
R 531	(A,91,94)	RS1/16SS473J
R 532	(A,91,85)	RS1/16SS222J
R 533	(A,92,85)	RS1/16SS222J
R 534	(A,93,92)	RS1/16SS272J
R 535	(A,95,92)	RS1/16SS472J
R 536	(A,96,92)	RS1/16SS472J
R 537	(A,96,85)	RS1/16SS101J
R 538	(A,95,84)	RS1/16SS101J
R 551	(A,25,111)	RS1/16SS682J
R 552	(A,30,112)	RS1/16SS0R0J
R 553	(A,27,112)	RS1/16SS1803D
R 554	(A,27,110)	RS1/16SS4302D
R 555	(A,39,124)	RS1/10SR471J
R 601	(A,101,66)	RS1/16SS473J
R 602	(A,107,63)	RS1/16SS473J
R 603	(A,109,62)	RS1/16SS473J
R 609	(A,122,64)	RS1/16SS473J
R 610	(A,122,70)	RS1/16SS473J
R 611	(A,124,72)	RS1/16SS473J
R 613	(A,121,76)	RS1/16SS152J
R 614	(A,122,78)	RS1/16SS473J
R 615	(A,130,79)	RS1/16SS473J
R 616	(A,125,68)	RS1/16SS473J
R 617	(A,131,81)	RS1/16SS103J
R 618	(A,125,82) (B,C,E)	RS1/16SS473J
R 619	(A,126,82) (A,D)	RS1/16SS473J
	(A,126,82) (E)	RS1/16SS103J
R 622	(A,125,87)	RS1/16SS473J
R 623	(A,130,85)	RAB4CQ473J
R 624	(A,120,89)	RS1/16SS222J
R 625	(A,114,90)	RS1/16SS101J
R 626	(A,113,90)	RS1/16SS101J
R 627	(A,112,88)	RS1/16SS101J
R 628	(A,111,90)	RS1/16SS101J
R 629	(A,109,92)	RS1/16SS101J
R 630	(A,110,89)	RS1/16SS101J
R 631	(A,107,92)	RS1/16SS473J
R 632	(A,105,91)	RS1/16SS473J
R 633	(A,107,90)	RS1/16SS101J
R 634	(A,103,88)	RS1/16SS102J
R 635	(A,102,88)	RS1/16SS102J
R 636	(A,100,91)	RS1/16SS473J
R 637	(A,100,90)	RS1/16SS473J
R 638	(A,104,92)	RS1/16SS473J

1

2

3

4

5		6		7		8	
<u>Circuit Symbol and No.</u>		<u>Part No.</u>		<u>Circuit Symbol and No.</u>		<u>Part No.</u>	
R 639	(A,97,91)	RS1/16SS472J		R 871	(A,143,65)	RS1/10SR332J	
R 640	(A,98,91)	RS1/16SS472J		R 872	(A,143,62)	RS1/16SS103J	
R 643	(A,99,82)	RS1/16SS104J		R 877	(A,121,27)	RS1/16SS1R0J	
R 644	(A,98,79)	RS1/16SS101J		R 878	(A,124,26)	RS1/10SR473J	A
R 645	(A,95,79)	RS1/16SS101J		R 891	(A,58,138)	RS1/16SS102J	
R 646	(A,92,75)	RS1/16SS103J		R 892	(A,58,136)	RS1/16SS102J	
R 647	(A,98,78)	RS1/16SS101J		R 911	(A,145,40)	RS1/10SR1R0J	
R 648	(A,95,76)	RS1/16SS102J		R 912	(A,141,41)	RS1/10SR1R0J	
R 649	(A,95,75)	RS1/16SS102J		R 941	(A,94,121)	RS1/16SS223J	
R 650	(A,95,74)	RS1/16SS102J		R 942	(A,94,122)	RS1/16SS473J	
R 651	(A,97,71)	RS1/16SS473J		R 943	(A,95,125) (A,B,D,E)	RS1/16SS472J	
R 652	(A,98,69)	RS1/16SS222J			(A,95,125) (C)	RS1/16SS473J	
R 653	(A,100,66)	RS1/16SS103J		R 944	(A,98,123)	RS1/4SA102J	
R 659	(A,123,61)	RS1/16SS153J		R 961	(A,127,112)	RS1/16SS103J	B
R 660	(A,123,60)	RS1/16SS153J		R 962	(A,130,113)	RS1/16SS103J	
R 664	(A,133,62)	RS1/16SS103J		R 963	(A,129,112)	RS1/16SS105J	
R 668	(A,93,71)	RS1/16SS473J		R 973	(A,90,63)	RS1/16SS0R0J	
R 669	(A,95,69)	RS1/16SS473J		R 974	(A,98,55)	RS1/16SS101J	
R 671	(A,128,70)	RS1/16SS104J		R 975	(A,98,54)	RS1/16SS101J	
R 681	(A,109,97)	RS1/16SS473J		R 976	(A,98,52)	RS1/16SS101J	
R 682	(A,110,91)	RS1/16SS473J		<u>CAPACITORS</u>			
R 683	(A,120,92)	RS1/16SS473J		C 201	(A,96,115)	CKSRYB105K10	
R 684	(A,109,94)	RS1/16SS473J		C 202	(A,104,116)	CKSRYB105K10	
R 685	(A,120,96)	RS1/16SS473J		C 203	(A,92,116)	CKSRYB105K10	C
R 701	(A,108,38)	RS1/16SS473J		C 204	(A,107,115)	CKSRYB105K10	
R 702	(A,115,37)	RS1/16SS104J		C 205	(A,94,116)	CKSRYB105K10	
R 703	(A,118,28)	RAB4CQ472J		C 206	(A,107,114)	CKSRYB105K10	
R 704	(A,110,41)	RS1/16SS104J		C 207	(A,94,108)	CKSSYB104K10	
R 706	(A,108,36)	RS1/16SS221J		C 208	(A,94,106)	CKSSYB104K10	
R 707	(A,109,38)	RS1/16SS221J		C 209	(A,93,104) 10 uF	CCG1192	
R 708	(A,110,38)	RS1/16SS101J		C 210	(A,96,106)	CCSSCH151J50	
R 709	(A,111,38)	RS1/16SS221J		C 211	(A,109,107)	CCSSCH151J50	
R 710	(A,112,38)	RS1/16SS101J		C 212	(A,108,109) 10 uF	CCG1192	
R 711	(A,114,39)	RS1/16SS102J		C 213	(A,108,106)	CKSSYB104K10	
R 715	(A,116,36)	RS1/16SS151J		C 214	(A,108,104)	CKSSYB104K10	D
R 716	(A,117,36)	RS1/16SS151J		C 215	(A,108,102)	CKSSYB104K10	
R 717	(A,119,36)	RS1/16SS151J		C 216	(A,92,101) 10 uF	CCG1192	
R 718	(A,122,36)	RS1/16SS221J		C 217	(A,95,100)	CKSSYB104K10	
R 719	(A,121,36)	RS1/16SS104J		C 218	(A,114,109)	XCEVW470M16	
R 752	(A,145,135)	RS1/10SR821J		C 219	(A,112,103) 10 uF	CCG1192	
R 753	(A,127,91)	RS1/16SS473J		C 220	(A,106,98) 10 uF	CCG1192	
R 754	(A,127,92)	RS1/16SS103J		C 223	(A,91,101)	CKSSYB102K50	
R 801	(A,124,22)	RS1/10SR222J		C 224	(A,115,103)	CKSSYB104K10	
R 802	(A,103,15)	RS1/10SR222J		C 229	(A,110,112)	CKSSYB102K50	
R 803	(A,121,17)	RS1/16SS223J		C 236	(A,110,104)	CKSRYB105K10	
R 804	(A,118,17)	RS1/16SS223J		C 251	(A,35,128) 4.7 uF	CCG1201	E
R 805	(A,121,19)	RS1/10SR101J		C 252	(A,17,127) 4.7 uF	CCG1201	
R 806	(A,118,20)	RS1/10SR101J		C 253	(A,17,130)	CCSSCH101J50	
R 807	(A,119,20)	RS1/10SR101J		C 254	(A,10,130)	CCSSCH101J50	
R 808	(A,124,20)	RS1/10SR222J		C 255	(A,35,132) 4.7 uF	CCG1201	
R 809	(A,115,21)	RS1/10SR220J		C 256	(A,30,130) 4.7 uF	CCG1201	
R 810	(A,114,21)	RS1/10SR220J		C 257	(A,26,131)	CCSSCH101J50	
R 811	(A,117,20)	RS1/10SR222J		C 258	(A,20,131)	CCSSCH101J50	
R 812	(A,112,21)	RS1/10SR222J		C 261	(A,6,133) (A,B,D)	CCSSCH101J50	
R 813	(A,107,16)	RS1/10SR222J			(A,6,133) (C,E)	CKSSYB102K50	
R 814	(A,101,19)	RS1/10SR222J		C 301	(A,69,129)	CKSRYB224K16	F
R 815	(A,100,19)	RS1/16SS822J		C 303	(A,80,129)	CKSRYB224K16	
R 816	(A,96,19)	RS1/10SR222J		C 305	(A,72,129)	CKSRYB224K16	
R 817	(A,95,19)	RS1/10SR222J					
R 851	(A,93,20)	RS1/16SS472J					

1

2

3

4

Circuit Symbol and No.**Part No.****Circuit Symbol and No.****Part No.**

C 307	(A,77,129)	CKSRYB224K16	C 531	(A,91,93)	CKSSYB104K10
C 313	(A,83,130)	CKSRYB105K16	C 532	(A,93,93)	CKSSYB104K10
C 314	(A,135,126)	CKSRYB104K16	C 551	(A,13,121)	XCEVW221M16
A C 317	(A,60,129)	XCEVW100M16			
C 319	(A,62,136)	CCSSCH101J50	C 552	(A,13,107)	CKSRYB105K16
			C 553	(A,15,110)	CKSSYB103K16
C 320	(A,64,135)	CCSSCK1R0C50	C 555	(A,25,112)	CKSSYB682K25
C 321	(A,83,129)	CCSSCH101J50	C 556	(A,32,120)	CEVQW221M6R3
C 322	(A,104,126)	CKSRYB104K16	C 557	(A,32,116)	CKSRYB105K10
C 323	(A,106,129)	CCSRCH100D50			
C 324	(A,102,129)	CCSRCH100D50	C 560	(A,108,21)	CKSRYB105K10
			C 561	(A,102,23)	CKSRYB105K10
C 325	(A,95,134)	CCSRCH100D50	C 564	(A,32,114) 4.7 uF	CCG1201
C 326	(A,93,138)	CCSRCH100D50	C 565	(A,15,107) 4.7 uF	CCG1222
C 327	(A,87,129)	CKSRYB105K16	C 601	(A,104,66)	CKSSYB104K10
C 402	(A,155,101)	CKSSYB103K16			
B C 403	(A,152,102)	CKSRYB105K10	C 602	(A,109,65)	CKSSYB104K10
			C 603	(A,111,65)	CKSSYB104K10
C 405	(A,162,101)	CKSSYB103K16	C 604	(A,112,65)	CKSSYB104K10
C 406	(A,160,101)	CKSSYB103K16	C 605	(A,116,65)	CKSSYB104K10
C 408	(A,161,105)	CKSSYB103K16	C 606	(A,122,71)	CKSSYB104K10
C 409	(A,156,105)	CCSSCH6R0D50			
C 410	(A,155,107)	CCSSCH330J50	C 607	(A,126,73)	CCSSCH120J50
			C 608	(A,126,78)	CCSSCH120J50
C 411	(A,148,99)	CKSSYB103K16	C 609	(A,121,73)	CKSSYB104K10
C 412	(A,148,101)	CKSSYB104K10	C 610	(A,121,75)	CKSSYB104K10
C 413	(A,150,101)	CKSSYB104K10	C 611	(A,122,77)	CKSSYB104K10
C 414	(A,145,100)	CKSSYB103K16			
C 415	(A,144,101) 10 uF	CCG1192	C 612	(A,122,82)	CKSSYB104K10
			C 613	(A,123,82)	CKSSYB104K10
C 416	(A,147,100)	CKSSYB104K10	C 618	(A,123,89)	CCSSCH120J50
C 418	(A,142,101)	CKSSYB223K16	C 619	(A,123,94)	CCSSCH120J50
C 419	(A,146,110) (D,E)	CCSSCH150J50	C 620	(A,114,88)	CKSSYB104K10
C 420	(A,150,106) (C,D,E)	CKSSYB103K16			
C 421	(A,154,111) (A,B)	CCSSCJ3R0C50	C 621	(A,108,88)	CKSSYB104K10
			C 622	(A,105,93)	CCSSCH220J50
C 423	(A,144,106) (D,E)	CCSSCH8R0D50	C 623	(A,106,88)	CKSSYB104K10
C 424	(A,140,101)	CKSSYB103K16	C 624	(A,105,88)	CKSSYB104K10
C 425	(A,138,99) 10 uF	CCG1192	C 625	(A,104,90)	CKSSYB104K10
C 426	(A,139,97)	CKSSYB104K10			
C 427	(A,144,97)	CKSSYB104K10	C 626	(A,100,80)	CKSSYB104K10
			C 627	(A,97,81)	CCSSCH220J50
D C 428	(A,137,96) (A,B,C)	CCSSCH101J50	C 628	(A,95,81)	CCSSCH220J50
	(A,137,96) (D,E)	CCSSCH220J50	C 629	(A,99,75)	CKSSYB104K10
C 429	(A,136,96)	CKSSYB103K16	C 630	(A,99,73)	CKSSYB104K10
C 430	(A,139,90) 1 uF(A,B)	DCH1246			
C 432	(A,138,92) (A,B,C)	CCSSCH820J50	C 631	(A,96,77)	CCSSCH220J50
	(A,138,92) (D,E)	CCSSCK2R0C50	C 672	(A,132,71)	CKSRYB105K10
			C 681	(A,121,96)	CKSSYB104K10
C 433	(A,136,91) 1 uF(A,B)	DCH1246	C 683	(A,120,94)	CCSSCJ3R0C50
C 435	(A,139,86) (A,B,C)	CKSRYB474K10	C 701	(A,111,41)	CKSSYB103K16
C 436	(A,140,84) (D,E)	CKSSYB104K10			
C 439	(A,145,80) (D,E)	CKSRYB104K16	C 704	(A,120,39)	CCSSCH100D50
C 440	(A,142,86)	CKSSYB102K50	C 705	(A,118,38)	CCSSCH100D50
C 441	(A,137,89) (A,B)	CCSSCH100D50	C 706	(A,116,38)	CCSSCH100D50
			C 752	(A,141,135)	CKSSYB104K10
C 442	(A,146,83)	CKSSYB104K10	C 753	(A,147,131) 10 uF	CCG1192
C 444	(A,152,82) 2.2 uF	CCG1218			
C 445	(A,156,82)	CKSSYB104K10	C 801	(A,124,6)	CKSRYB221K50
C 447	(A,157,83) 2.2 uF(D,E)	CCG1218	C 806	(A,125,8)	CKSRYB104K16
C 448	(A,158,85) (A,B,C)	CKSSYB104K10	C 807	(A,122,14)	CKSRYB105K10
C 449	(A,161,85)	CCSSCH9R0D50	C 808	(A,108,19)	CKSRYB104K16
			C 809	(A,96,16)	CCSRCH221J50
C 450	(A,161,90)	CCSSCH9R0D50			
C 451	(A,158,91)	CKSSYB104K10	C 810	(A,96,13)	CCSRCH221J50
C 452	(A,158,94)	CKSRYB105K10	C 811	(A,104,20)	CKSSYB104K10
C 453	(A,160,96)	CKSSYB104K10	C 873	(A,124,24)	CKSRYB104K16
F C 455	(A,158,97)	CKSRYB224K16	C 891	(A,52,138)	CKSRYB104K16
			C 892	(A,34,139)	CKSRYB104K16
C 456	(A,161,92)	CKSSYB472K25			
C 457	(A,161,93)	CKSSYB472K25	C 893	(A,34,135)	CKSRYB102K50
C 461	(A,145,104)	CKSSYB104K16	C 894	(A,52,134)	CKSRYB102K50

1

2

3

4

5		6		7		8	
<u>Circuit Symbol and No.</u>		<u>Part No.</u>		<u>Circuit Symbol and No.</u>		<u>Part No.</u>	
C 901	(A,133,124) 2 200 uF/16 V	CCH2040		S 1837	(A,116,5) Push Switch	CSG1155	
C 912	(A,152,40)	CKSSYB102K50		S 1838	(A,85,5) Push Switch	CSG1155	
C 913	(A,131,43)	CKSSYB102K50		S 1839	(A,95,5) Push Switch	CSG1155	
C 914	(A,156,56) 1 000 uF/16 V	CCH2024		S 1840	(A,74,5) Push Switch	CSG1155	A
C 915	(A,132,42)	CKSRYB104K16		S 1842	(A,10,36) Push Switch	CSG1155	
C 916	(A,146,43) 4.7 uF	CCG1201		CN1911	(A,157,26) Connector	CKS6443	
C 917	(A,145,46)	CKSSYB102K50		CN1931	(B,109,10) Connector	CKS6451	
C 919	(A,151,42) 4.7 uF	CCG1201		JA1921	(A,154,12) Jack	CKN1094	
C 921	(A,135,42) 4.7 uF	CCG1201		V 1802	(A,53,33) Segment LCD	CAW2025	
C 923	(A,159,41) 4.7 uF	CCG1201		RESISTORS			
C 926	(A,140,44) 4.7 uF	CCG1201		R 1809	(B,75,14)	RS1/16SS473J	
C 927	(A,139,42)	CKSSYB102K50		R 1810	(B,63,21)	RS1/16SS103J	
C 941	(A,96,124)	CKSRYB104K16		R 1824	(B,33,30)	RS1/16SS273J	B
C 961	(A,126,107)	CKSSYB104K16		R 1851	(B,50,15)	RS1/10SR222J	
C 962	(A,132,107)	CKSSYB104K16		R 1852	(B,48,15)	RS1/10SR222J	
C 966	(A,128,112)	CKSSYB333K16		R 1853	(B,47,15)	RS1/10SR222J	
C 969	(A,135,113) 22 uF	DCH1256		R 1854	(B,41,15)	RS1/16SS102J	
C 973	(A,98,53)	CCSSCH470J50		R 1856	(B,41,18)	RS1/16SS102J	
B				R 1858	(B,42,20)	RS1/16SS102J	
Unit Number :				R 1860	(B,53,19)	RS1/16SS102J	
Unit Name : Keyboard Unit				R 1862	(B,55,19)	RS1/16SS102J	
MISCELLANEOUS				R 1864	(B,54,22)	RS1/16SS102J	
IC 1802	(B,84,22) IC	PDC202B		R 1866	(B,29,11)	RS1/16SS101J	
IC 1851	(B,47,20) IC	BH2228FV		R 1867	(B,21,14)	RS1/16SS101J	C
IC 1941	(A,149,40) Remote IC	GP1UXC14RK		R 1868	(B,12,30)	RS1/16SS101J	
Q 1851	(B,40,12) Transistor	LSCR523UB		R 1875	(B,58,14)	RS1/16SS101J	
Q 1852	(B,32,9) Transistor	LSCR523UB		R 1876	(B,57,20)	RS1/16SS101J	
Q 1853	(B,35,10) Transistor	LSCR523UB		R 1877	(B,54,24)	RS1/16SS101J	
Q 1854	(B,57,16) Transistor	LSCR523UB		R 1881	(B,27,10)	RS1/16SS680J	
Q 1855	(B,58,18) Transistor	LSCR523UB		R 1882	(B,28,9)	RS1/16SS0R0J	
Q 1856	(B,57,23) Transistor	LSCR523UB		R 1883	(B,18,11)	RS1/16SS680J	
Q 1857	(B,22,12) Transistor	LSCR523UB		R 1884	(B,19,11)	RS1/16SS0R0J	
Q 1858	(B,15,12) Transistor	LSCR523UB		R 1885	(B,13,25)	RS1/16SS680J	
Q 1859	(B,12,28) Transistor	LSCR523UB		R 1886	(B,14,23)	RS1/16SS0R0J	
Q 1866	(B,105,24) Transistor	LSCR523UB		R 1899	(B,107,27)	RS1/16SS680J	D
Q 1867	(B,112,25) Transistor	LSCR523UB		R 1900	(B,108,28)	RS1/16SS0R0J	
Q 1868	(B,119,25) Transistor	LSCR523UB		R 1901	(B,113,28)	RS1/16SS680J	
D 1882	(A,10,22) LED	SMLVN6RGB2U(A)		R 1902	(B,115,28)	RS1/16SS0R0J	
D 1883	(A,40,22) LED	SMLVN6RGB2U(A)		R 1903	(B,118,28)	RS1/16SS680J	
D 1884	(A,164,22) LED	SMLVN6RGB2U(A)		R 1904	(B,118,29)	RS1/16SS0R0J	
D 1885	(A,48,23) LED	MSL0101RGBU		R 1931	(B,89,7)	RS1/10SR222J	
D 1886	(A,147,24) LED	MSL0101RGBU		R 1932	(B,91,8)	RS1/10SR222J	
L 1802	(B,136,11) Inductor	CTF1389		R 1944	(B,144,28)	RS1/10SR101J	
L 1803	(B,131,6) Inductor	CTF1389		CAPACITORS			
L 1804	(B,135,5) Inductor	CTF1389		C 1801	(B,78,12)	CKSSYB104K10	
X 1801	(B,69,22) Ceramic Resonator 5.00 MHz	CSS1547		C 1802	(B,77,12)	CKSSYB104K10	
S 1821	(A,53,5) Push Switch	CSG1155		C 1803	(B,79,12)	CKSSYB104K10	
S 1822	(A,9,41) Push Switch	CSG1155		C 1804	(B,72,22)	CKSRYB105K10	
S 1823	(A,64,5) Push Switch	CSG1155		C 1805	(B,72,24)	CKSSYB104K10	
S 1824	(A,11,6) Push Switch	CSG1155		C 1851	(B,52,13)	CCSRCH100D50	
S 1826	(A,6,22) Push Switch	CSG1155		C 1852	(B,51,15)	CCSRCH100D50	
S 1828	(A,39,34) Push Switch	CSG1155		C 1853	(B,45,15)	CCSRCH100D50	
S 1830	(A,25,22)Encoder(MULTI-CONTROL)	CSD1168		C 1854	(B,52,23)	CKSSYB103K16	
S 1832	(A,39,10) Push Switch	CSG1155		C 1855	(B,52,24)	CKSRYB105K10	
S 1834	(A,137,5) Push Switch	CSG1155		C 1911	(B,146,27)	CKSRYB104K16	F
S 1835	(A,127,5) Push Switch	CSG1155		C 1912	(B,149,18)	CKSRYB104K16	
S 1836	(A,106,5) Push Switch	CSG1155		C 1941	(B,143,30) 10 uF	CCG1192	

1
Circuit Symbol and No.

2
Part No.

3
Circuit Symbol and No.

4
Part No.

D
Unit Number : QWM3533
Unit Name : BT Unit

MISCELLANEOUS

IC 21	(A,8,48) IC	S-1172B18-E6
IC 22	(A,21,46) IC	S-1206B33-U3
CN21	(A,34,27) Connector	CKS6346
CN23	(A,42,44) Connector	CKS3857

RESISTORS

R 28	(A,42,31)	RS1/10SR102J
R 29	(A,30,41)	RS1/10SR102J
R 30	(A,30,37)	RS1/10SR102J
R 38	(A,42,17)	RS1/10SR0R0J
R 39	(A,41,23)	RS1/10SR221J
R 40	(A,40,23)	RS1/10SR221J
R 41	(A,38,23)	RS1/10SR221J

CAPACITORS

C 23	(A,24,40) Capacitor	CEVW221M4
C 24	(A,7,44)	CKSRYB105K10
C 26	(A,27,48) 10 uF	CCG1192
C 29	(A,17,45)	CKSRYB105K10
C 33	(A,9,54) 10 uF	CCG1192
C 34	(A,42,30)	CKSRYB105K10
C 36	(A,32,40)	CKSRYB104K16
C 38	(A,15,46) 10 uF	CCG1192
C 39	(A,6,42) 10 uF	CCG1192

C
Unit Number : CWX4023

Unit Name : CD Core Unit (S11.6STD)

MISCELLANEOUS

IC 201	(B,23,37) IC	PE5791A
IC 301	(A,37,11) IC	BD8223EFV
Q 101	(B,11,53) Transistor	2SA1577
Q 102	(B,15,54) Transistor	LTA123JUB
X 201	(B,25,49) Ceramic Resonator	16.934 MHz CSS1603
S 901	(A,42,53) Spring Switch(HOME)	CSN1080
S 903	(B,21,12) Spring Switch(DSCSNS)	CSN1081
CN101	(A,16,58) Connector	CKS4808
CN701	(A,25,29) Connector	CKS6146

RESISTORS

R 101	(B,6,57)	RS1/10SR2R4J
R 102	(B,8,57)	RS1/10SR2R4J
R 103	(B,9,57)	RS1/10SR2R7J
R 108	(B,18,55)	RS1/16SS105J
R 109	(B,12,50)	RS1/16SS222J
R 201	(A,24,11)	RS1/16SS0R0J
R 202	(A,23,9)	RS1/16SS0R0J
R 214	(B,18,28)	RS1/16SS103J
R 215	(B,17,28)	RS1/16SS393J
R 216	(B,12,35)	RS1/16SS122J

R 217	(B,10,32)	RS1/16SS562J
R 218	(B,10,35)	RS1/16SS472J
R 229	(B,12,34)	RS1/16SS471J
R 232	(A,31,54)	RS1/16SS0R0J
R 237	(B,33,45)	RS1/16SS221J

R 240	(B,34,40)	RS1/16SS473J
R 245	(A,34,46)	RS1/16SS104J
R 254	(A,37,56)	RS1/16SS104J
R 260	(B,30,27)	RS1/16SS103J
R 264	(A,22,9)	RS1/16SS102J

R 281	(B,33,38)	RS1/16SS560J
R 282	(B,33,39)	RS1/16SS560J
R 283	(B,35,38)	RS1/16SS0R0J
R 291	(B,33,34)	RS1/16SS560J
R 292	(B,33,36)	RS1/16SS0R0J

R 293	(B,35,39)	RS1/16SS0R0J
R 294	(B,27,48)	RS1/16SS471J
R 296	(B,34,43)	RS1/16SS0R0J
R 301	(A,27,9)	RS1/16SS0R0J
R 302	(A,28,9)	RS1/16SS0R0J

R 303	(A,27,11)	RS1/16SS123J
R 304	(A,28,11)	RS1/16SS123J
R 305	(A,26,9)	RS1/16SS102J
R 306	(A,26,11)	RS1/16SS472J
R 307	(A,25,9)	RS1/16SS102J

R 308	(A,25,11)	RS1/16SS472J
R 309	(A,35,6)	RS1/16SS473J
R 310	(B,30,9)	RS1/16SS472J
R 311	(B,30,10)	RS1/16SS472J
R 312	(B,30,11)	RS1/16SS472J

R 313	(B,30,12)	RS1/16SS472J
R 701	(A,21,38)	RS1/16SS101J
R 702	(A,23,38)	RS1/16SS101J
R 706	(A,32,42)	RS1/16SS221J
R 708	(B,28,26)	RS1/16SS0R0J

R 709	(B,29,28)	RS1/16SS0R0J
-------	-----------	--------------

CAPACITORS

C 104	(B,12,57)	CKSQYB475K6R3
C 203	(B,22,47)	CKSSYB104K10
C 209	(B,28,47)	CKSRYB104K16
C 210	(B,33,43)	CKSSYB104K10
C 211	(B,33,41)	CKSSYB104K10

C 212	(B,22,28)	CKSSYB104K10
C 213	(B,18,26)	CKSSYB332K50
C 214	(B,17,26)	CKSSYB473K16
C 215	(B,19,28)	CKSSYB104K10
C 216	(B,12,33)	CKSSYB182K50

C 217	(B,10,34)	CCSSCH560J50
C 218	(B,10,36)	CCSSCH4R0C50
C 219	(B,14,34)	CKSSYB104K10
C 220	(A,18,38)	CKSSYB104K10
C 221	(B,14,32)	CKSSYB104K10

C 222	(B,13,37)	CKSSYB104K10
C 223	(B,12,42)	CCSSCH680J50
C 224	(B,13,45)	CCSSCH470J50
C 225	(B,13,46)	CKSSYB103K16
C 228	(B,10,33)	CCSSCH270J50

C 229	(B,9,40)	CKSSYB104K10
-------	----------	--------------

5
Circuit Symbol and No.

6
Part No.

C 233	(B,32,46)	CKSSYB103K16
C 236	(B,8,40)	CKSSYB104K10
C 238	(A,25,44)	CKSRYB104K16
C 299	(A,26,41)	CKSSYB104K10
C 302	(B,28,12)	CKSSYB102K50
C 303	(B,29,12)	CKSSYB102K50
C 304	(B,27,12)	CKSSYB223K16
C 305	(B,26,12)	CKSSYB104K10
C 306	(A,31,7)	CKSSYB104K10
C 307	(A,41,19)	CKSRYB105K10
C 308	(A,31,15)	CKSRYB105K10
C 710	(A,34,42)	CKSSYB102K50

Miscellaneous Parts List

	Pickup Unit(P10.6)(Service)	CXX3556
M 1	Motor Unit(SPDL)	CXE2273
M 2	Motor Unit(LOAD/CRG)	CXC4026