

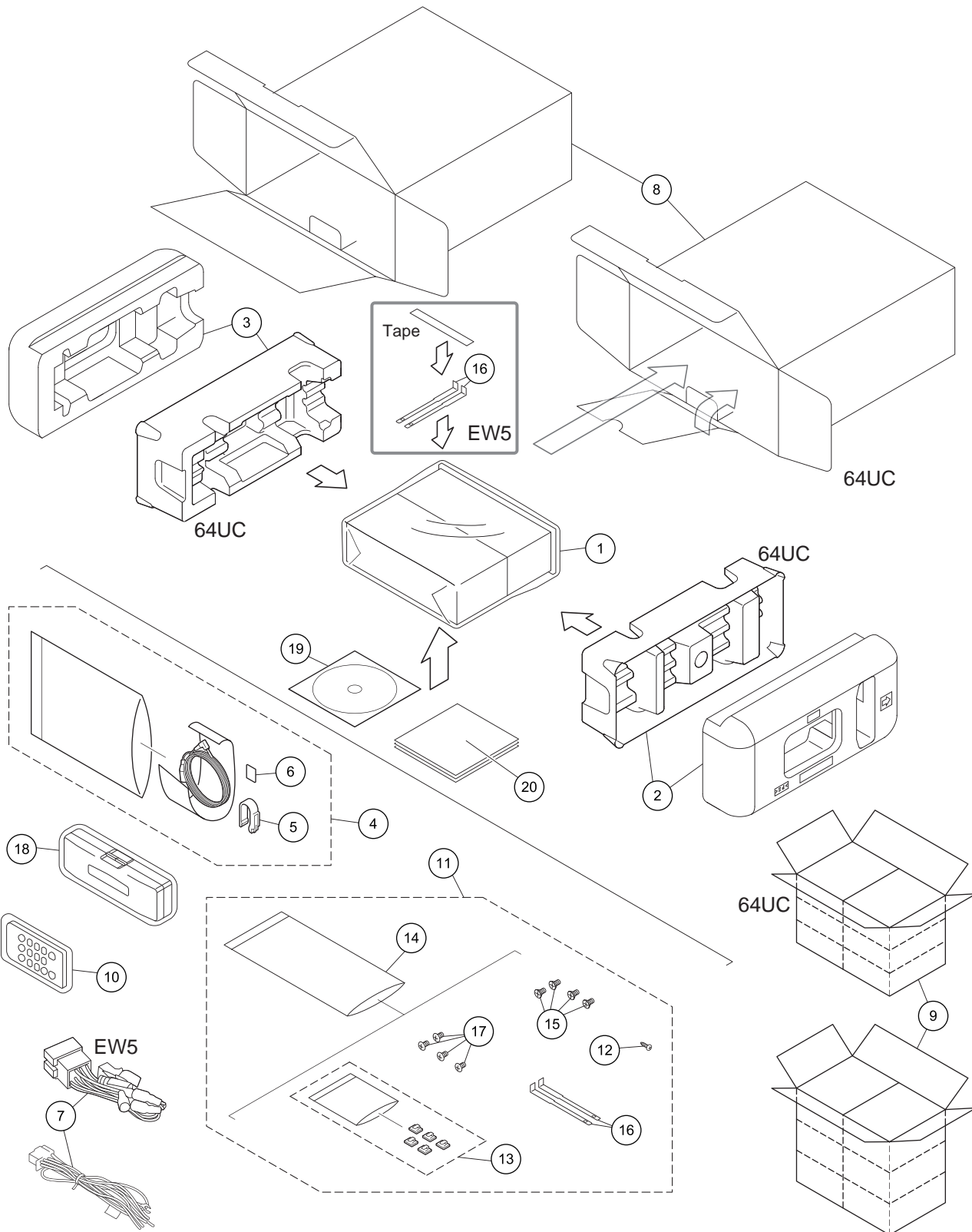


# 9. EXPLODED VIEWS AND PARTS LIST

- NOTES :
- Parts marked by "\*" are generally unavailable because they are not in our Master Spare Parts List.
  - The  mark found on some component parts indicates the importance of the safety factor of the part. Therefore, when replacing, be sure to use parts of identical designation.
  - Screw adjacent to  mark on the product are used for disassembly.
  - For the applying amount of lubricants or glue, follow the instructions in this manual. (In the case of no amount instructions, apply as you think it appropriate.)

## 9.1 PACKING



## PACKING SECTION PARTS LIST

Mark	No.	Description	DEH-64BT/ XNUC	DEH-6400BT/ XNUC	DEH-5400BT/ XNUC	DEH-4400BT/ XNEW5	DEH-4450BT/ XNES	DEH-4490BT/ XNID
	1	Polyethylene Bag	CEG1173	CEG1173	CEG1173	QEG3001	QEG3001	QEG3001
	2	Protector	CHP4103	QHP3016	QHP3016	QHP3016	QHP3016	QHP3016
	3	Protector	CHP4104	QHP3016	QHP3016	QHP3016	QHP3016	QHP3016
	4	Microphone Assy	CPM1083	CPM1083	CPM1083	CPM1083	CPM1083	CPM1083
	5	Holder	CZN7192	CZN7192	CZN7192	CZN7192	CZN7192	CZN7192
	6	Cushion	CZN7193	CZN7193	CZN7193	CZN7193	CZN7193	CZN7193
	7	Cord Assy	QDP3013	QDP3013	QDP3013	QDP3014	QDP3013	QDP3013
	8	Unit Box	QHG3136	QHG3135	QHG3134	QHG3132	QHG3133	QHG3137
	9	Contain Box	QHL3136	QHL3135	QHL3134	QHL3132	QHL3133	QHL3137
	10	Card type RC Unit	QXE1044	QXE1044	QXE1044	Not used	QXE1044	QXE1044
*	11	Accessory Assy	YEA5100	YEA5100	YEA5100	Not used	YEA5099	YEA5099
	12	Screw	BPZ20P060FTC	BPZ20P060FTC	BPZ20P060FTC	Not used	Not used	Not used
	13	Attachment Assy	CEA4636	CEA4636	CEA4636	CEA4636	CEA4636	CEA4636
	14	Polyethylene Bag	CEG1160	CEG1160	CEG1160	Not used	CEG1160	CEG1160
	15	Screw	CRZ50P090FTC	CRZ50P090FTC	CRZ50P090FTC	Not used	Not used	Not used
	16	Handle	QNC3021	QNC3021	QNC3021	QNC3021	QNC3021	QNC3021
	17	Screw	TRZ50P080FTC	TRZ50P080FTC	TRZ50P080FTC	Not used	TRZ50P080FTC	TRZ50P080FTC
	18	Case Assy	Not used	Not used	Not used	QXA3129	QXA3129	QXA3129
	19	IM CD-ROM	Not used	Not used	Not used	QPJ3009	Not used	Not used
	20-1	Owner's Manual	QRD3096	QRD3096	QRD3096	Not used	QRD3097	QRB3193
	20-2	Quick Start Guide	Not used	Not used	Not used	QRD3094	Not used	Not used
	20-3	Installation Manual	Not used	Not used	Not used	QRD3095	Not used	Not used
*	20-4	Warranty Card	QRY3001	QRY3001	QRY3001	CRY1316	Not used	CRY1304
*	20-5	Caution Card	Not used	Not used	Not used	QRP3009	Not used	Not used
*	20-6	Service Network	Not used	Not used	Not used	Not used	Not used	CRY1305

### Owner's Manual, Installation Manual

Part No.	Language
QRD3096	English, French, Spanish(Espanol)
QRD3094	English, French, Italian, Spanish(Espanol), German ,Dutch, Russian
QRD3095	English, French, Italian, Spanish(Espanol), German ,Dutch, Russian
QRD3097	English, Spanish(Espanol), Portuguese(B), Arabic, Persian, Traditional Chinese
QRB3193	English
QRB3194	Portuguese(B)

### CONTENTS OF CD-ROM (Operation Manual), QPJ3009

Part No.	Language
* QRB3179	English
* QRB3180	French
* QRB3181	Italian
* QRB3182	Spanish(Espanol)
* QRB3183	German
* QRB3184	Dutch
* QRB3185	Russian
* QRB3186	Swedish
* QRB3187	Norwegian
* QRB3188	Finnish
* QRB3189	Danish
* QRB3190	Portuguese
* QRB3191	Greek
* QRB3192	Turkish

All operation manuals are supplied in PDF files by the CD-ROM.  
Regarding the availability of paper manual, contact Pioneer Service representative in your region.

# 9.2 EXTERIOR

1

2

3

4

A

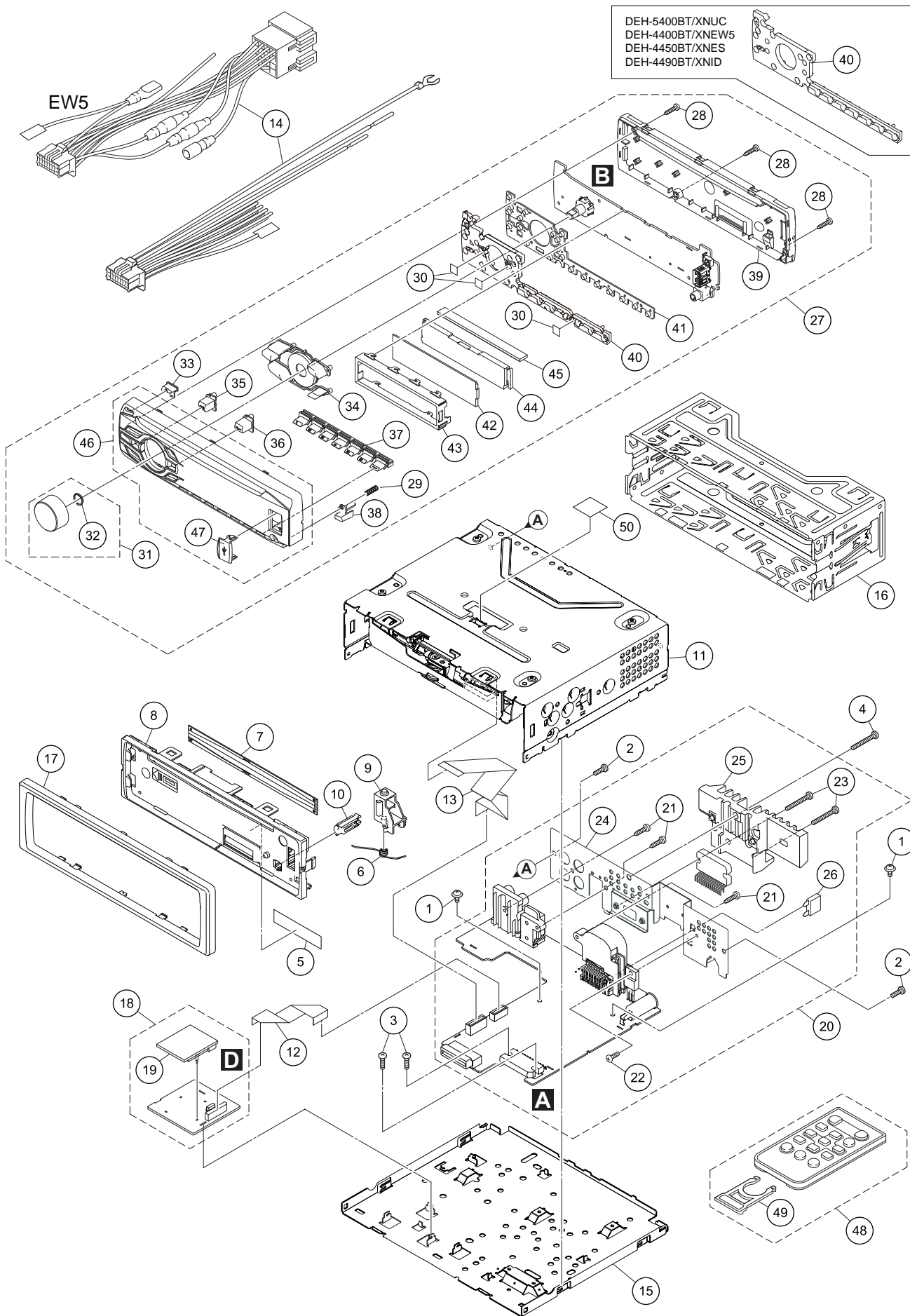
B

C

D

E

F



DEH-64BT/XNUC

1

2

3

4

**(1) EXTERIOR SECTION PARTS LIST**

<u>Mark No.</u>	<u>Description</u>	<u>Part No.</u>	<u>Mark No.</u>	<u>Description</u>	<u>Part No.</u>	
1	Screw	ASZ26P050FTC	⚠ 26	Fuse(10 A)	YEK5001	
2	Screw	BSZ26P060FTC	27	Detach Grille Assy	See Contrast table (2)	
3	Screw	BSZ26P080FTC	28	Screw	BPZ20P100FTC	
4	Screw	BSZ26P120FTC	29	Spring	CBH2210	
*	5	Seal	See Contrast table (2)	30	Sheet	See Contrast table (2)
6	Spring	QBH3001	31	Knob Unit	CXE3692	
7	Cover	QNM3029	32	Spring	YBL5010	
8	Panel	QNS3126	33	Button(EJECT)	QAC3066	
9	Arm	QNV3025	34	Button(LIST, SRC, PHONE, RETURN, BAND)	QAC3067	
10	Button	QNV3026	35	Button(LEFT)	QAC3068	
11	CD Mechanism Module(S11.6)	CXK5804	36	Button(RIGHT)	QAC3069	
12	Cable	QDE3020	37	Button(1-6, -)	QAC3070	
13	Cable	QDE3021	38	Button(DETACH)	QAC3071	
14	Cord Assy	See Contrast table (2)	39	Cover	QNS3226	
15	Case	QNB3003	40	Lighting Conductor	See Contrast table (2)	
16	Holder	QNC3020	41	Contact Rubber	QNV3041	
17	Panel	QNS3127	42	Segment LCD(V1801)	CAW2017	
18	BT Unit	QWM3365	43	Holder	QNC3031	
19	BT Module	CWX4123	44	Lighting Conductor	QNV3040	
20	Tuner Amp Assy	See Contrast table (2)	45	Rubber Connector	QNV3045	
21	Screw	BPZ26P080FTC	46	Grille Unit	See Contrast table (2)	
22	Screw	BSZ26P060FTC	47	Door	QAT3004	
23	Screw	BSZ26P120FTC	48	Card type RC Unit	See Contrast table (2)	
24	Holder	QNC3036	49	Cover	See Contrast table (2)	
25	Heat Sink	QNR3002	50	Label	See Contrast table (2)	

**(2) CONTRAST TABLE**

DEH-64BT/XNUC, DEH-6400BT/XNUC, DEH-5400BT/XNUC, DEH-4400BT/XNEW5, DEH-4450BT/XNES and DEH-4490BT/XNID are constructed the same except for the following:

<u>Mark</u>	<u>No.</u>	<u>Description</u>	<u>DEH-64BT/ XNUC</u>	<u>DEH-6400BT/ XNUC</u>	<u>DEH-5400BT/ XNUC</u>	<u>DEH-4400BT/ XNEW5</u>	<u>DEH-4450BT/ XNES</u>	<u>DEH-4490BT/ XNID</u>
*	5	Seal	CAN3984	Not used	CAN3984	Not used	Not used	Not used
	14	Cord Assy	QDP3013	QDP3013	QDP3013	QDP3014	QDP3013	QDP3013
	20	Tuner Amp Assy	QWM3362	QWM3300 (Tuner Amp Unit)	QWM3299 (Tuner Amp Unit)	QWM3298 (Tuner Amp Unit)	QWM3301 (Tuner Amp Unit)	QWM3302 (Tuner Amp Unit)
	27	Detach Grille Assy	QXA3468	QXA3467	QXA3466	QXA3465	QXA3469	QXA3470
	30	Sheet	CNN3494	CNN3494	Not used	Not used	Not used	Not used
	40	Lighting Conductor	QNV3039	QNV3039	QNV3038	QNV3038	QNV3038	QNV3038
	46	Grille Unit	QXA3418	QXA3417	QXA3416	QXA3415	QXA3419	QXA3420
	48	Card type RC Unit	QXE1044	QXE1044	QXE1044	Not used	QXE1044	QXE1044
	49	Cover	CNS7068	CNS7068	CNS7068	Not used	CNS7068	CNS7068
	50	Label	Not used	Not used	Not used	Not used	Not used	CNN3533

# 9.3 CD MECHANISM MODULE

A

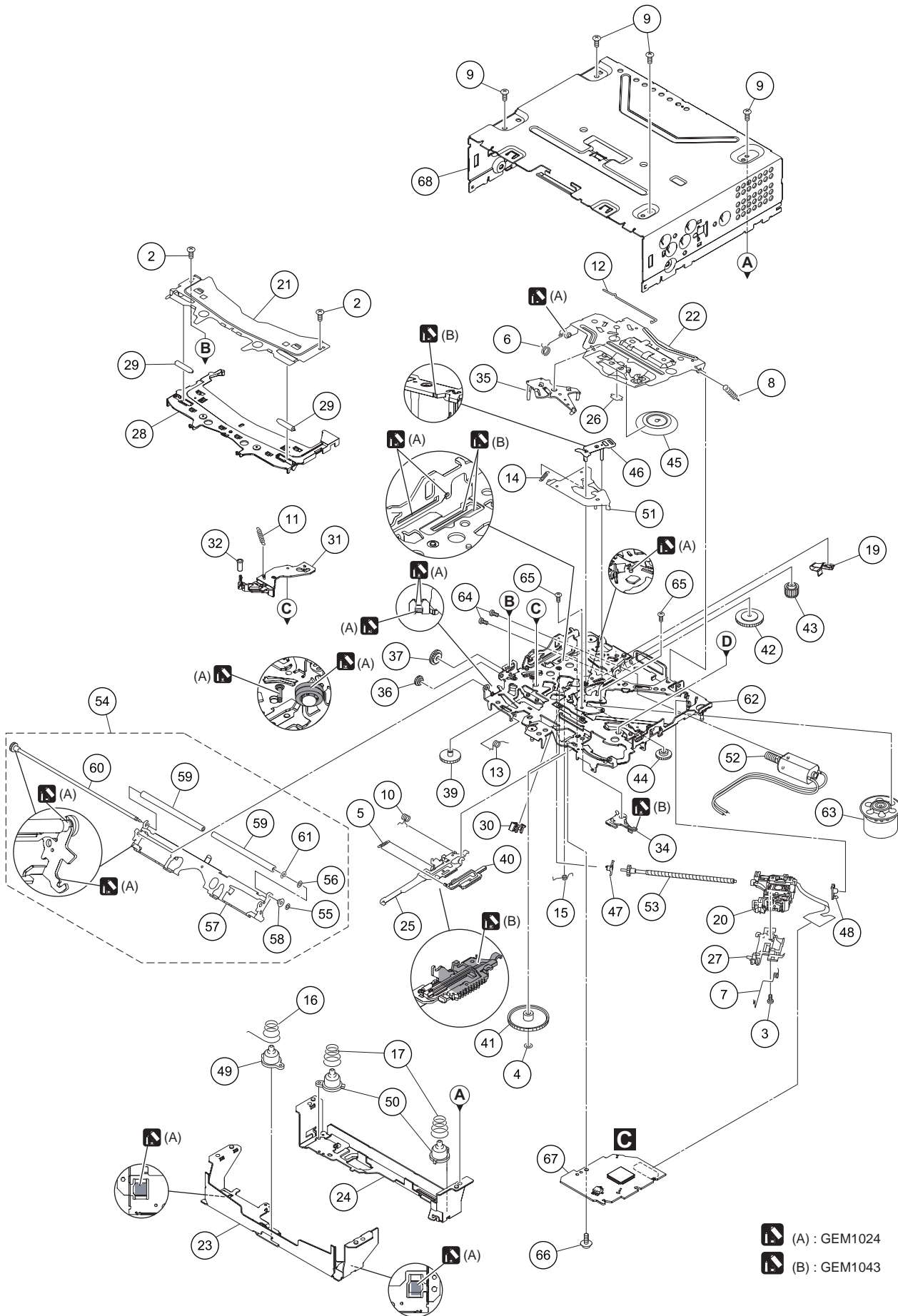
B

C

D

E

F



(A) : GEM1024  
 (B) : GEM1043

## CD MECHANISM MODULE SECTION PARTS LIST

<u>Mark No.</u>	<u>Description</u>	<u>Part No.</u>	<u>Mark No.</u>	<u>Description</u>	<u>Part No.</u>
1	.....		50	Damper	CNW1198
2	Screw	BSZ20P040FTC	51	Arm	CNW1726
3	Screw(M2 x 4)	CBA1835	52	Motor Unit(M2)(LOAD/CRG)	CXC4026
4	Washer	CBF1038	53	Screw Unit	CXC8894
5	Spring	CBH3010	54	Arm Assy	CXE5027
6	Spring	CBH2855	55	Washer	CBF1037
7	Spring	CBH2856	56	Washer	CBF1038
8	Spring	CBH2860	57	Arm	CND6242
9	Screw	BSZ26P060FTC	58	Collar	CNW2444
10	Spring	CBH3011	59	Roller	CNW1196
11	Coil Spring	CBH3095	60	Gear Unit	CXC8893
12	Spring	CBH3014	61	Washer	YE15FTC
13	Spring	CBH3015	62	Chassis Unit	CXE4528
14	Spring	CBH3016	63	Motor Unit(M1)(SPDL)	CXE2273
15	Spring	CBH3017	64	Screw	JFZ20P025FTC
16	Spring	CBH3086	65	Screw	JGZ17P022FTC
17	Spring	CBH3019	66	Screw	EBA1028
18	.....		67	CD Core Unit (S11.6STD)	CWX4023
19	Leaf Spring	CBL1824	68	Chassis	CNA3181
20	Pickup Unit(P10.6)(Service)	CXX3556			
21	Bracket	CND4553			
22	Arm	CND4555			
23	Bracket	CND6127			
24	Bracket	CND5710			
25	Lever	CND5398			
26	Sheet	CNN3678			
27	Rack	CNV8342			
28	Guide	CNW2240			
29	Roller	CNW1172			
30	Holder	CNW1195			
31	Arm	CNW2241			
32	Roller	CNW1175			
33	.....				
34	Arm	CNW1177			
35	Arm	CNW1178			
36	Gear	CNW1180			
37	Gear	CNW1181			
38	.....				
39	Gear	CNW1183			
40	Rack	CNW1184			
41	Gear	CNW1185			
42	Gear	CNW1186			
43	Gear	CNW1187			
44	Gear	CNW2287			
45	Clamper	CNW1190			
46	Arm	CNW1192			
47	Holder	CNW1193			
48	Holder	CNW1194			
49	Damper	CNW1197			

# 12. ELECTRICAL PARTS LIST

**NOTE:**

- Parts whose parts numbers are omitted are subject to being not supplied.
- The part numbers shown below indicate chip components.

Chip Resistor

RS1/○S○○○○J,RS1/○○S○○○○J

Chip Capacitor (except for CQS.....)

CKS....., CCS....., CSZS.....

- The  $\triangle$  mark found on some component parts indicates the importance of the safety factor of the part. Therefore, when replacing, be sure to use parts of identical designation.
- Meaning of the figures and others in the parentheses in the parts list.

Example) IC 301 is on the point (face A, 91 of x-axis, and 111 of y-axis) of the corresponding PC board.

IC 301 (A, 91, 111) IC NJM2068V

<u>Circuit Symbol and No.</u>	<u>Part No.</u>	<u>Circuit Symbol and No.</u>	<u>Part No.</u>
A:DEH-64BT/XNUC		: QWM3298(D)	
B:DEH-6400BT/XNUC		: QWM3301(E)	
C:DEH-5400BT/XNUC		: QWM3302(F)	
D:DEH-4400BT/XNEW5		Unit Name : Tuner Amp Unit	
E:DEH-4450BT/XNES		<b>MISCELLANEOUS</b>	
F:DEH-4490BT/XNID		IC 201 (A,98,112) IC	PML022A
Unit Number : QWM3362(A)		IC 231 (A,144,57) D/A Converter	PCM1753DBQ
: QWM3300(B)		IC 301 (A,78,141) IC	PAL007E
: QWM3299(C)		IC 401 (A,150,90) IC	TDA7706
: QWM3298(D)		IC 501 (A,20,113) IC	BD9008F
: QWM3301(E)		IC 510 (A,107,30) IC	BD2232G-G
: QWM3302(F)		IC 551 (A,115,90) IC	341S2162
Unit Name : Tuner Amp Unit		IC 601 (A,118,65) IC	R5S7266ZD144FP
Unit Number : (A,B)		IC 651 (A,98,53) IC	S-80827CNMC-B8M
Unit Name : Keyboard Unit		IC 671 (A,126,85) Flash ROM Unit(A,B)	PEB009A8
Unit Number : CWX4023		(A,126,85) Flash ROM Unit(C)	PEB008A8
Unit Name : CD Core Unit (S11.6STD)		(A,126,85) Flash ROM Unit(D,E,F)	PEB029A8
Unit Number : (C,E,F)		IC 801 (A,108,19) L-MOS And Gate	TC7SET08FUS1
: (D)		IC 912 (A,145,28) IC	BA49182-V12
Unit Name : Keyboard Unit		IC 961 (A,95,76) IC	NJM4558MD
Unit Number : QWM3365		Q 251 (A,23,130) Chip Transistor	RN1910
Unit Name : BT Unit		Q 252 (A,13,129) Chip Transistor	RN1910
		Q 351 (A,88,127) Chip Transistor	RN4983
		Q 551 (A,122,93) Transistor	LSA1576UB
		Q 751 (A,142,138) Transistor	2SD2396
		Q 752 (A,140,133) Chip Transistor	RN4983
		Q 871 (A,146,69) Transistor(C,D,E,F)	2SD1767
		Q 872 (A,159,77) Chip Transistor(C,D,E,F)	RN4983
		Q 873 (A,161,73) Transistor	LTC143EUB
		Q 874 (A,151,70) Transistor(A,B)	2SA1577
		Q 931 (A,118,104) Transistor	LSC4081UB
		D 301 (A,100,126) Diode	CRG03
		D 302 (A,96,126) Diode	CRG03
		D 401 (A,158,106) Diode	KP2311E
		D 402 (A,158,99) Diode	KP2311E
		D 501 (A,29,109) Diode	RB160L-40
		D 502 (A,20,124) Diode	CRG03
		D 503 (A,20,122) Diode	CRG03
		D 601 (A,117,81) Diode	RB551V-30

**A**

Unit Number : QWM3362(A)  
 : QWM3300(B)  
 : QWM3299(C)

1

2

3

4

**Circuit Symbol and No.****Part No.****Circuit Symbol and No.****Part No.**

D 602	(A,127,50) Diode	RB751S-40			
D 751	(A,138,134) Diode	RKZ8.2KG(B2)	R 201	(A,100,59)	RAB4CQ102J
D 801	(A,114,13) Diode	DZ2S068C	R 231	(A,147,56)	RS1/16SS821J
D 802	(A,117,12) Diode	DZ2S068C	R 232	(A,148,56)	RS1/16SS821J
D 803	(A,121,12) Diode	DZ2S068C	R 251	(A,19,130)	RS1/16SS821J
			R 252	(A,29,131)	RS1/16SS821J
D 804	(A,126,12) Diode	DZ2S068C			
D 805	(A,122,12) Diode(A,B)	DZ2S068C	R 253	(A,9,129)	RS1/16SS821J
D 807	(A,113,13) Diode(A,B)	DZ2S068C	R 254	(A,18,130)	RS1/16SS821J
D 809	(A,96,14) Diode	DZ2S068C	R 255	(A,21,130)	RS1/16SS223J
D 810	(A,108,14) Diode	DZ2S068C	R 256	(A,26,130)	RS1/16SS223J
			R 257	(A,11,129)	RS1/16SS223J
D 811	(A,102,14) Diode	DZ2S068C			
D 872	(A,154,76) Diode(C,D,E,F)	RKZ7.5KG(B2)	R 258	(A,15,130)	RS1/16SS223J
D 875	(A,118,29) Diode(A,B)	CRG03	R 303	(A,86,122)	RS1/16SS103J
D 876	(A,122,26) Diode(A,B)	CRG03	R 304	(A,86,125)	RS1/16SS473J
			R 331	(A,74,125)	RS1/16SS471J
D 901	(A,139,125) Diode	1SR154-400	R 332	(A,81,125)	RS1/16SS471J
D 902	(A,136,125) Diode	1SR154-400			
D 911	(A,158,65) Diode	1SR154-400	R 333	(A,75,125)	RS1/16SS471J
D 912	(A,162,65) Diode	1SR154-400	R 334	(A,80,125)	RS1/16SS471J
			R 351	(A,91,127)	RS1/16SS103J
D 931	(A,116,107) Diode(A,B,C,E,F)	HZU7L(A1)	R 352	(A,90,127)	RS1/16SS103J
	(A,116,107) Diode(D)	HZU7L(C3)	R 353	(A,91,128)	RS1/16SS221J
L 401	(A,159,102) Chip Coil	LCTAWR15J2520			
L 402	(A,151,101) Inductor	CTF1786	R 401	(A,161,106)	RS1/16SS221J
L 403	(A,146,102) Inductor	CTF1786	R 402	(A,161,99)	RS1/16SS751J
L 404	(A,155,103) Chip Coil(A,B,C,D)	LCTAWR27J2520	R 403	(A,139,103) (A,B,C,D)	RS1/16SS152J
	(A,155,103) Chip Coil(E,F)	LCTAWR39J2520		(A,139,103) (E,F)	RS1/16SS331J
			R 405	(A,142,99)	RS1/16SS105J
L 405	(A,142,103) Inductor(A,B,C,D)	CTF1389			
L 406	(A,139,101) Inductor(A,B,C,D)	LCTAW220J2520	R 406	(A,137,96) (A,B,C,D)	RS1/16SS471J
	(A,139,101) Chip Coil(E,F)	LCTAW1R5J2520		(A,137,96) (E,F)	RS1/16SS361J
L 407	(A,162,95) Inductor	CTF1786	R 407	(A,139,95)	RS1/16SS330J
L 408	(A,162,94) Inductor	CTF1786	R 408	(A,138,91) (A,B,C,D)	RS1/16SS681J
L 409	(A,137,93) Chip Coil(A,B,C,D)	LCTAW470J2520		(A,138,91) (E,F)	RS1/16SS391J
	(A,137,93) Inductor(E,F)	LCTAW2R2J2520			
			R 410	(A,136,79)	RS1/4SA8R2J
L 415	(A,146,81) Inductor	CTF1786	R 412	(A,137,84)	RS1/4SA8R2J
L 416	(A,154,79) Inductor(D)	CTF1786	R 413	(A,145,107)	RS1/16SS105J
L 417	(A,138,107) Chip Coil(E,F)	LCTAWR39J2520	R 419	(A,139,70)	RS1/16SS103J
L 418	(A,142,105) Chip Coil(E,F)	LCTAWR27J2520	R 420	(A,141,70)	RS1/16SS103J
L 420	(A,145,106) Inductor(A,B,C)	LCYB68NJ1608	R 421	(A,153,79) (A,B,C,E,F)	RS1/16SS0R0J
L 501	(A,34,109) Coil	CTH1475	R 427	(A,142,84)	RS1/16SS102J
L 671	(A,131,81) Inductor	CTF1786	R 428	(A,139,86)	RS1/16SS0R0J
L 801	(A,116,15) Inductor	CTF1713	R 431	(A,137,104) (A,B,C)	RS1/16SS0R0J
			R 433	(A,141,90) (A,B,C,D)	RS1/16SS0R0J
L 901	(A,112,140) Choke Coil 600 uH	CTH1432			
X 401	(A,161,87) Oscillator 36.48 MHz	CSS1805	R 434	(A,144,97) (E,F)	RS1/16SS0R0J
X 601	(A,134,59) Ceramic Resonator 16.934 MHz	CSS1603	R 501	(A,22,119)	RS1/10SR471J
X 602	(A,114,49) Oscillator 12 MHz	YSS5005	R 502	(A,24,117)	RS1/16SS6202D
⚠ P251	(A,7,128) Fuse 3 A	CEK1286	R 503	(A,22,117)	RS1/16SS3601D
P 401	(A,155,108) Surge Protector	IMSA-6802-01Y900	R 504	(A,20,119)	RS1/16SS1202D
VA891	(A,51,137) Varistor	VR105C5R0AAA	R 505	(A,27,113)	RS1/16SS183J
VA892	(A,34,137) Varistor	VR105C5R0AAA	R 506	(A,15,114)	RS1/16SS513J
VA893	(A,48,133) Varistor	VR105C5R0AAA	R 508	(A,104,64)	RS1/16SS103J
VA894	(A,36,133) Varistor	VR105C5R0AAA	R 551	(A,115,95)	RS1/16SS473J
CN701	(A,92,38) Connector	VKN1192	R 552	(A,116,85)	RS1/16SS103J
CN801	(A,109,3) Connector	CKS6288	R 553	(A,117,85)	RS1/16SS103J
CN961	(A,93,64) Connector	VKN1189	R 556	(A,119,91)	RS1/16SS272J
JA251	(A,19,137) Pin Jack	CKB1099	R 557	(A,120,90)	RS1/16SS472J
JA401	(A,158,128) Antenna Jack	YKS5041	R 558	(A,122,90)	RS1/16SS472J
JA891	(A,42,140) Jack	YKS5035	R 559	(A,115,85)	RS1/16SS101J
JA901	(A,113,140) Plug	CKM1586	R 560	(A,118,85)	RS1/16SS101J
⚠	Fuse(10 A)	YEK5001	R 601	(A,116,83)	RS1/16SS103J
			R 602	(A,114,80)	RS1/16SS473J
			R 603	(A,115,83)	RS1/16SS104J

**RESISTORS**

1

2

3

4

5		6		7		8	
<u>Circuit Symbol and No.</u>		<u>Part No.</u>		<u>Circuit Symbol and No.</u>		<u>Part No.</u>	
R 604	(A,104,76)	RAB4CQ473J		R 812	(A,120,18) (A,B)	RS1/10SR222J	
R 607	(A,104,70)	RS1/16SS473J		R 813	(A,105,14) (A,B)	RS1/10SR222J	
R 608	(A,104,69)	RS1/16SS473J		R 814	(A,105,11) (C,D,E,F)	RS1/10SR0R0J	
R 609	(A,132,66)	RS1/16SS101J		R 815	(A,123,18)	RS1/10SR101J	A
R 610	(A,103,65)	RS1/16SS222J					
R 611	(A,139,64)	RS1/16SS101J		R 816	(A,124,16)	RS1/16SS223J	
R 612	(A,106,76)	RS1/16SS473J		R 817	(A,121,16)	RS1/16SS223J	
R 613	(A,142,64)	RS1/16SS101J		R 818	(A,127,18)	RS1/10SR222J	
R 615	(A,103,63)	RS1/16SS104J		R 851	(A,96,16)	RS1/16SS472J	
R 617	(A,132,62)	RS1/16SS221J		R 871	(A,154,67) (A,B)	RS1/10SR473J	
					(A,154,67) (C,D,E,F)	RS1/10SR222J	
R 619	(A,135,55)	RAB4CQ473J		R 872	(A,125,26) (A,B)	RS1/16SS1R0J	
R 620	(A,105,57)	RS1/16SS473J		R 873	(A,163,78) (C,D,E,F)	RS1/4SA151J	
R 621	(A,131,52)	RS1/16SS473J		R 874	(A,154,71) (A,B)	RS1/16SS122J	
R 622	(A,106,50)	RS1/16SS473J		R 875	(A,125,39) (A,B)	RS1/16SS0R0J	
R 623	(A,113,51)	RS1/16SS152J					B
R 624	(A,108,50)	RS1/16SS473J		R 876	(A,124,40) (C,D,E,F)	RS1/16SS0R0J	
R 626	(A,121,51)	RS1/16SS5601F		R 877	(A,151,74) (A,B)	RS1/16SS103J	
R 628	(A,127,51)	RS1/16SS103J		R 879	(A,158,73) (C,D,E,F)	RS1/10SR473J	
R 629	(A,106,54)	RS1/16SS102J		R 880	(A,154,73) (C,D,E,F)	RS1/10SR181J	
				R 882	(A,121,28) (A,B)	RS1/16SS0R0J	
R 630	(A,125,50) (A,E,F)	RS1/16SS473J		R 884	(A,122,28) (C,D,E,F)	RS1/16SS1R0J	
R 631	(A,125,52) (B,C,D)	RS1/16SS473J		R 885	(A,157,72) (A,B)	RS1/16SS152J	
	(A,125,52) (E)	RS1/16SS103J					
	(A,125,52) (F)	RS1/16SS223J		R 891	(A,54,133)	RS1/10SR102J	
R 632	(A,121,43)	RS1/16SS103J		R 892	(A,58,136)	RS1/10SR102J	
R 633	(A,117,43)	RS1/16SS101J		R 911	(A,140,40)	RS1/10SR1R0J	
R 636	(A,109,51)	RS1/16SS473J		R 912	(A,144,41)	RS1/10SR1R0J	
R 641	(A,113,79)	RS1/16SS473J		R 931	(A,121,105)	RS1/16SS223J	C
R 642	(A,92,53)	RS1/16SS473J					
R 651	(A,101,53)	RS1/16SS104J		R 932	(A,118,106)	RS1/16SS473J	
R 671	(A,131,86)	RS1/10SR473J		R 933	(A,115,106) (A,B,C,E,F)	RS1/16SS472J	
R 672	(A,126,91)	RS1/10SR473J			(A,115,106) (D)	RS1/16SS473J	
R 701	(A,97,43)	RS1/16SS473J		R 934	(A,115,113)	RS1/4SA102J	
R 702	(A,97,37)	RS1/16SS104J		R 961	(A,92,80)	RS1/10SR473J	
				R 962	(A,101,73)	RS1/16SS822J	
R 703	(A,99,41)	RS1/16SS104J					
R 704	(A,97,47)	RAB4CQ472J		R 963	(A,90,75)	RS1/16SS822J	
R 707	(A,97,44)	RS1/16SS221J		R 964	(A,91,54)	RS1/16SS102J	
R 708	(A,97,42)	RS1/16SS221J		R 965	(A,90,71)	RS1/16SS0R0J	
R 709	(A,97,41)	RS1/16SS101J		R 966	(A,97,57)	RS1/16SS102J	
				R 967	(A,90,77)	RS1/16SS103J	D
R 710	(A,97,40)	RS1/16SS221J					
R 711	(A,97,39)	RS1/16SS101J		R 968	(A,100,74)	RS1/16SS103J	
R 712	(A,97,38)	RS1/16SS102J		R 969	(A,91,77)	RS1/16SS103J	
R 713	(A,97,35)	RS1/16SS151J		R 970	(A,101,75)	RS1/16SS103J	
R 714	(A,97,34)	RS1/16SS151J		R 971	(A,100,81)	RS1/10SR473J	
				R 972	(A,105,83)	RS1/16SS103J	
R 715	(A,97,33)	RS1/16SS151J					
R 716	(A,96,31)	RS1/16SS221J					
R 717	(A,97,32)	RS1/16SS104J					
R 751	(A,97,45)	RS1/16SS473J					
R 752	(A,99,45)	RS1/16SS103J					
R 753	(A,143,133)	RS1/10SR821J					
R 801	(A,121,18)	RS1/10SR101J					
R 802	(A,124,18)	RS1/10SR101J					
R 803	(A,102,18)	RS1/10SR222J					
R 804	(A,109,14)	RS1/10SR222J					
R 805	(A,117,18)	RS1/10SR8R2J					
R 806	(A,118,18)	RS1/10SR8R2J					
R 807	(A,125,18)	RS1/10SR222J					
R 808	(A,100,18)	RS1/10SR222J					
R 809	(A,104,18)	RS1/16SS822J					
R 810	(A,99,19)	RS1/10SR222J					
R 811	(A,114,16) (A,B)	RS1/10SR222J					

**CAPACITORS**

C 201	(A,106,108) 10 uF	CCG1192
C 202	(A,100,105)	CCSSCH100D50
C 203	(A,103,108) 4.7 uF	CCG1201
C 204	(A,100,106)	CCSSCH100D50
C 205	(A,93,105)	CKSRYB105K10
C 206	(A,93,118)	CKSRYB105K10
C 207	(A,97,106)	CKSRYB105K10
C 208	(A,97,118)	CKSRYB105K10
C 209	(A,99,106)	CKSRYB105K10
C 210	(A,99,118)	CKSRYB105K10
C 211	(A,94,104)	CKSRYB105K10
C 212	(A,95,118)	CKSRYB105K10
C 213	(A,123,103) (D)	CCSSCH101J50
C 215	(A,102,107)	CCSSCH100D50
C 216	(A,96,118)	CKSRYB105K10

1

2

3

4

**Circuit Symbol and No.****Part No.****Circuit Symbol and No.****Part No.**

C 217	(A,96,105)	CKSRYB105K10	C 423	(A,136,95)	CKSSYB103K16
C 232	(A,144,52)	CKSSYB103K16	C 424	(A,162,91)	CKSSYB472K25
C 233	(A,149,54) 10 uF	CCG1192	C 425	(A,162,92)	CKSSYB472K25
C 234	(A,145,63) 10 uF	CCG1192	C 426	(A,158,90)	CKSSYB104K10
C 237	(A,148,60)	CCSRCH182J50	C 427	(A,138,90) (A,B,C,D)	CCSSCH820J50
C 238	(A,149,64)	CCSRCH182J50		(A,138,90) (E,F)	CCSSCK2R0C50
C 239	(A,147,58)	CKSSYB102K50	C 428	(A,161,89)	CCSSCH9R0D50
C 251	(A,31,129) 4.7 uF	CCG1201	C 429	(A,161,84)	CCSSCH9R0D50
C 252	(A,35,130) 4.7 uF	CCG1201	C 430	(A,139,85) (A,B,C,D)	CKSRYB474K10
C 253	(A,31,126) 4.7 uF	CCG1201	C 431	(A,158,84) (A,B,C,D)	CKSSYB104K10
C 254	(A,35,127) 4.7 uF	CCG1201	C 432	(A,157,82) 2.2 uF(E,F)	CCG1205
C 255	(A,20,130)	CCSSCH101J50	C 433	(A,140,83) (E,F)	CKSSYB104K10
C 256	(A,28,130)	CCSSCH101J50	C 437	(A,156,81)	CKSSYB104K10
C 257	(A,10,129)	CCSSCH101J50	C 439	(A,145,79) (E,F)	CKSRYB104K16
C 258	(A,17,130)	CCSSCH101J50	C 440	(A,147,82)	CKSSYB104K10
C 259	(A,33,135)	CKSSYB102K50	C 441	(A,152,81) 2.2 uF	CCG1205
C 301	(A,74,128)	CKSRYB474K10	C 443	(A,145,104) (D,E,F)	CKSSYB103K16
C 302	(A,81,128)	CKSRYB474K10	C 444	(A,139,104) (E,F)	CCSSCH8R0D50
C 303	(A,76,128)	CKSRYB474K10	C 445	(A,142,101)	CKSSYB223K16
C 304	(A,79,128)	CKSRYB474K10	C 447	(A,142,85)	CKSSYB102K50
C 305	(A,74,131)	CKSRYB474K10	C 452	(A,134,90) (A,B,C)	CKSSYB105K6R3
C 306	(A,81,131)	CKSRYB474K10	C 455	(A,137,88) (A,B,C)	CCSSCH100D50
C 307	(A,76,131)	CKSRYB474K10	C 457	(A,139,89) (A,B,C)	CKSSYB105K6R3
C 308	(A,79,131)	CKSRYB474K10	C 458	(A,148,107) (A,B,C)	CCSSCJ3R0C50
C 309	(A,135,134)	CKSRYB104K16	C 503	(A,32,119)	CEVQW221M6R3
C 310	(A,83,128) 2.2 uF	CCG1205	C 505	(A,11,119) Capacitor	CEVW221M16
C 311	(A,82,131) 2.2 uF	CCG1205	C 506	(A,27,114)	CKSSYB153K16
C 312	(A,98,127)	CKSRYB104K16	C 507	(A,14,112)	CKSRYB105K16
C 313	(A,67,128)	CEVW100M16	C 508	(A,26,114)	CCSSCH220J50
C 314	(A,61,135)	CCSSCH101J50	C 509	(A,24,109)	CKSRYB105K16
C 315	(A,84,130)	CCSSCH101J50	C 510	(A,40,121)	CKSRYB105K10
C 317	(A,62,136)	CCSSCK1R0C50	C 512	(A,113,29)	CKSRYB105K10
C 318	(A,107,129)	CCSRCH100D50	C 514	(A,32,114) 10 uF	CCG1192
C 319	(A,103,129)	CCSRCH100D50	C 551	(A,116,95)	CKSSYB104K10
C 320	(A,96,133)	CCSRCH100D50	C 552	(A,119,90)	CKSSYB104K10
C 321	(A,92,136)	CCSRCH100D50	C 601	(A,121,78)	CKSSYB104K10
C 351	(A,93,127) 10 uF	CCG1192	C 602	(A,118,78)	CKSSYB104K10
C 401	(A,155,106)	CCSSCH330J50	C 603	(A,114,78)	CKSSYB104K10
C 402	(A,158,104)	CCSSCH6R0D50	C 604	(A,106,73)	CKSSYB104K10
C 403	(A,161,104)	CKSSYB103K16	C 605	(A,131,72)	CKSSYB104K10
C 404	(A,150,100)	CKSSYB104K10	C 606	(A,104,72)	CKSSYB104K10
C 405	(A,147,99)	CKSSYB104K10	C 607	(A,132,71)	CKSSYB104K10
C 406	(A,160,101)	CKSSYB103K16	C 608	(A,106,67)	CKSSYB104K10
C 407	(A,148,100)	CKSSYB104K10	C 609	(A,132,67)	CKSSYB104K10
C 408	(A,141,107) (E,F)	CCSSCH150J50	C 610	(A,105,66)	CKSSYB104K10
C 409	(A,162,101)	CKSSYB103K16	C 612	(A,136,66)	CKSSYB104K10
C 410	(A,148,98)	CKSSYB103K16	C 616	(A,105,62)	CKSSYB104K10
C 411	(A,145,100)	CKSSYB103K16	C 617	(A,133,63) (A,B,C,E,F)	CCSSCH100D50
C 412	(A,144,100) 10 uF	CCG1192	C 618	(A,104,60)	CKSSYB104K10
C 413	(A,155,101)	CKSSYB103K16	C 619	(A,132,61)	CKSSYB104K10
C 414	(A,152,102)	CKSRYB105K10	C 620	(A,138,58)	CKSSYB104K10
C 415	(A,141,99)	CKSSYB103K16	C 621	(A,106,57)	CKSSYB104K10
C 416	(A,159,96)	CKSRYB224K16	C 622	(A,130,52)	CKSSYB104K10
C 417	(A,160,95)	CKSSYB104K10	C 623	(A,124,51)	CKSSYB104K10
C 418	(A,139,98) 10 uF	CCG1192	C 624	(A,123,50)	CKSSYB104K10
C 419	(A,158,93)	CKSRYB105K10	C 625	(A,122,51)	CKSSYB104K10
C 420	(A,139,96)	CKSSYB104K10	C 626	(A,120,51)	CKSSYB104K10
C 421	(A,137,95) (A,B,C,D)	CCSSCH101J50	C 627	(A,118,51)	CKSSYB104K10
C 422	(A,137,95) (E,F)	CCSSCH220J50	C 628	(A,114,51)	CKSSYB104K10
	(A,140,92)	CKSSYB104K10	C 629	(A,108,52)	CKSSYB104K10
			C 630	(A,128,52)	CKSSYB104K10

1

2

3

4

5		6		7		8	
<u>Circuit Symbol and No.</u>		<u>Part No.</u>		<u>Circuit Symbol and No.</u>		<u>Part No.</u>	
C 632	(A,115,47)	CCSSCH120J50		Q 1859	(B,21,23) Transistor	LSC4081UB	
C 633	(A,113,47)	CCSSCH120J50		Q 1860	(B,60,28) Transistor	LSC4081UB	
C 638	(A,122,43)	CKSRYB105K10		Q 1861	(B,53,16) Transistor	LSC4081UB	
C 651	(A,105,53)	CKSRYB105K10		Q 1862	(B,48,27) Transistor	LSC4081UB	A
C 671	(A,131,83)	CKSSYB104K10		Q 1863	(B,21,17) Transistor	LSC4081UB	
C 701	(A,100,41)	CKSSYB103K16		Q 1864	(B,21,25) Transistor	LSC4081UB	
C 751	(A,147,131) 10 uF	CCG1192		Q 1865	(B,68,27) Transistor	LSC4081UB	
C 754	(A,141,135)	CKSSYB104K10		Q 1866	(B,57,24) Transistor	LSC4081UB	
C 802	(A,93,20) (A,B)	CKSRYB104K16		Q 1867	(B,63,23) Transistor	LSC4081UB	
C 803	(A,90,14) (A,B)	CKSRYB104K16		Q 1868	(B,69,25) Transistor	LSC4081UB	
C 808	(A,113,18)	CKSRYB104K16		D 1851	(A,50,21) LED	SMLV56RGB1U1(Q)	
C 809	(A,125,9)	CKSRYB104K16		D 1852	(A,112,6) LED	SMLV56RGB1U1(Q)	
C 810	(A,100,15)	CCSRCH221J50		D 1853	(A,22,21) LED	SMLV56RGB1U1(Q)	
C 811	(A,98,13)	CCSRCH221J50		D 1854	(A,64,22) Chip LED	NSSM038A-6430	
C 812	(A,123,12)	CKSRYB105K16		X 1801	(B,83,10) Ceramic Resonator 5.00 MHz	CSS1547	B
C 817	(A,108,17)	CKSSYB104K10		S 1842	(A,36,21) Encoder(ROTARY COMMANDER)	CSD1168	
C 818	(A,124,6)	CKSRYB104K16		CN1821	(B,108,10) Connector	CKS6287	
C 871	(A,160,75) (C,D,E,F)	CKSSYB104K16		CN1911	(A,155,22) Connector	CKS6267	
C 872	(A,154,69) (A,B)	CKSRYB104K16		JA1921	(A,154,8) Jack	CKN1090	
C 872	(A,154,69) (C,D,E,F)	CKSRYB105K16		V 1801	(A,106,23) Segment LCD	CAW2017	
C 901	(A,133,124) 3 300 uF/16 V	CCH1732					
C 913	(A,141,40)	CKSSYB102K50					
C 914	(A,141,42) 4.7 uF	CCG1201					
C 916	(A,150,41) 4.7 uF	CCG1201		R 1801	(B,88,7)	RS1/10SR222J	
C 917	(A,138,40) 4.7 uF	CCG1201		R 1802	(B,88,8)	RS1/10SR222J	
C 918	(A,153,42) 4.7 uF	CCG1201		R 1803	(B,141,29)	RS1/10SR101J	C
C 919	(A,144,39)	CKSSYB102K50		R 1822	(B,63,8)	RS1/16SS273J	
C 920	(A,147,42) 4.7 uF	CCG1201		R 1851	(B,71,20)	RS1/16SS102J	
C 921	(A,133,39)	CKSRYB104K16		R 1852	(B,49,19)	RS1/16SS101J	
C 922	(A,157,54) (A,B,C,D)	CEAT102M16		R 1853	(B,55,30)	RS1/16SS181J	
C 922	(A,157,54) 1 000 uF/16 V(E,F)	CCH2024		R 1854	(B,55,31)	RS1/16SS181J	
C 923	(A,154,40)	CKSSYB102K50		R 1855	(B,24,14)	RS1/16SS101J	
C 926	(A,133,41)	CKSRYB102K50		R 1856	(B,18,11)	RS1/16SS181J	
C 931	(A,114,105)	CKSRYB104K16		R 1857	(B,18,10)	RS1/16SS181J	
C 961	(A,106,84)	CKSRYB105K16		R 1858	(B,24,19)	RS1/16SS101J	
C 962	(A,103,82) 10 uF	CCG1192		R 1859	(B,18,20)	RS1/16SS181J	
C 963	(A,99,68)	CKSRYB105K10		R 1860	(B,18,19)	RS1/16SS181J	D
C 964	(A,97,69)	CKSRYB105K10		R 1861	(B,54,27)	RS1/16SS101J	
C 966	(A,91,75)	CCSSCH221J50		R 1862	(B,63,29)	RS1/16SS181J	
C 967	(A,100,76)	CKSSYB471K50		R 1863	(B,63,27)	RS1/16SS151J	
C 968	(A,90,79)	CKSSYB471K50		R 1864	(B,57,16)	RS1/16SS102J	
C 969	(A,100,73)	CCSSCH221J50		R 1865	(B,46,13)	RS1/16SS101J	
				R 1866	(B,53,30)	RS1/16SS121J	

**RESISTORS**

**B**

**Unit Number : (A,B)**  
**Unit Name : Keyboard Unit**

**MISCELLANEOUS**

IC 1801	(B,85,23) IC	PD6538A
IC 1802	(A,159,37) Remote IC	GP1UXC14RK
IC 1851	(B,62,18) DAC	BU2507FV
Q 1851	(B,51,14) Transistor	LSC4081UB
Q 1852	(B,52,25) Transistor	LSC4081UB
Q 1853	(B,21,11) Transistor	LSC4081UB
Q 1854	(B,21,20) Transistor	LSC4081UB
Q 1855	(B,57,28) Transistor	LSC4081UB
Q 1856	(B,56,14) Transistor	LSC4081UB
Q 1857	(B,51,28) Transistor	LSC4081UB
Q 1858	(B,21,14) Transistor	LSC4081UB

R 1867	(B,53,31)	RS1/16SS221J
R 1868	(B,24,16)	RS1/16SS101J
R 1869	(B,18,15)	RS1/16SS121J
R 1870	(B,18,14)	RS1/16SS221J
R 1871	(B,24,22)	RS1/16SS101J
R 1872	(B,18,23)	RS1/16SS121J
R 1873	(B,18,22)	RS1/16SS221J
R 1874	(B,62,25)	RS1/16SS101J
R 1875	(B,62,29)	RS1/16SS181J
R 1876	(B,62,27)	RS1/16SS181J
R 1877	(B,57,17)	RS1/16SS102J
R 1878	(B,45,30)	RS1/16SS101J
R 1879	(B,51,30)	RS1/16SS181J
R 1880	(B,51,31)	RS1/16SS181J
R 1881	(B,24,17)	RS1/16SS101J
R 1882	(B,18,18)	RS1/16SS181J
R 1883	(B,18,16)	RS1/16SS181J

1

2

3

4

**Circuit Symbol and No.****Part No.****Circuit Symbol and No.****Part No.**

R 1884 (B,24,23) RS1/16SS101J  
 R 1885 (B,18,26) RS1/16SS181J  
 R 1886 (B,18,25) RS1/16SS181J

R 215 (B,17,28)  
 R 216 (B,12,35)

RS1/16SS393J  
 RS1/16SS122J

A R 1887 (B,70,22) RS1/16SS101J  
 R 1888 (B,67,29) RS1/16SS181J  
 R 1889 (B,69,29) RS1/16SS181J  
 R 1890 (B,57,18) RS1/16SS102J  
 R 1891 (B,57,20) RS1/16SS102J

R 217 (B,10,32)  
 R 218 (B,10,35)  
 R 229 (B,12,34)  
 R 232 (A,31,54)  
 R 237 (B,33,45)

RS1/16SS562J  
 RS1/16SS472J  
 RS1/16SS471J  
 RS1/16SS0R0J  
 RS1/16SS221J

R 1892 (B,69,22) RS1/16SS102J  
 R 1893 (B,65,13) RS1/10SR222J  
 R 1894 (B,63,13) RS1/10SR222J  
 R 1895 (B,62,13) RS1/10SR222J

R 240 (B,34,40)  
 R 245 (A,34,46)  
 R 254 (A,37,56)  
 R 260 (B,30,27)  
 R 264 (A,22,9)

RS1/16SS473J  
 RS1/16SS104J  
 RS1/16SS104J  
 RS1/16SS103J  
 RS1/16SS102J

**CAPACITORS**

B C 1801 (B,144,31) 10 uF CCG1192  
 C 1802 (B,89,11) CKSRYB105K10  
 C 1803 (B,88,10) CKSSYB104K10  
 C 1804 (B,89,13) CKSSYB104K10  
 C 1805 (B,90,13) CKSSYB104K10

R 281 (B,33,38)  
 R 282 (B,33,39)  
 R 283 (B,35,38)  
 R 291 (B,33,34)  
 R 292 (B,33,36)

RS1/16SS560J  
 RS1/16SS560J  
 RS1/16SS0R0J  
 RS1/16SS560J  
 RS1/16SS0R0J

C 1851 (B,68,19) CKSRYB105K10  
 C 1852 (B,49,22) CKSSYB104K16  
 C 1853 (B,57,9) CKSSYB104K16  
 C 1854 (B,24,27) CKSSYB104K16  
 C 1855 (B,55,27) CKSSYB104K16

R 293 (B,35,39)  
 R 294 (B,27,48)  
 R 296 (B,34,43)  
 R 301 (A,27,9)  
 R 302 (A,28,9)

RS1/16SS0R0J  
 RS1/16SS471J  
 RS1/16SS0R0J  
 RS1/16SS0R0J  
 RS1/16SS0R0J

C C 1856 (B,104,19) CCSRCH100D50  
 C 1857 (B,103,19) CCSRCH100D50  
 C 1858 (B,106,19) CCSRCH100D50  
 C 1859 (B,59,14) CKSSYB103K16  
 C 1863 (B,59,26) CKSSYB104K16

R 303 (A,27,11)  
 R 304 (A,28,11)  
 R 305 (A,26,9)  
 R 306 (A,26,11)  
 R 307 (A,25,9)

RS1/16SS123J  
 RS1/16SS123J  
 RS1/16SS102J  
 RS1/16SS472J  
 RS1/16SS102J

C 1867 (B,66,24) CKSSYB104K16  
 C 1911 (B,142,19) CKSRYB104K16  
 C 1912 (B,134,26) CKSRYB104K16

R 308 (A,25,11)  
 R 309 (A,35,6)  
 R 310 (B,30,9)  
 R 311 (B,30,10)  
 R 312 (B,30,11)

RS1/16SS472J  
 RS1/16SS473J  
 RS1/16SS472J  
 RS1/16SS472J  
 RS1/16SS472J

**C**  
**Unit Number: CWX4023**  
**Unit Name : CD Core Unit (S11.6STD)**

R 313 (B,30,12)  
 R 701 (A,21,38)  
 R 702 (A,23,38)  
 R 706 (A,32,42)  
 R 708 (B,28,26)

RS1/16SS472J  
 RS1/16SS101J  
 RS1/16SS101J  
 RS1/16SS221J  
 RS1/16SS0R0J

R 709 (B,29,28)

RS1/16SS0R0J

**MISCELLANEOUS**

IC 201 (B,23,37) IC PE5791A  
 IC 301 (A,37,11) IC BD8223EFV  
 Q 101 (B,11,53) Transistor 2SA1577  
 Q 102 (B,15,54) Chip Digital Transistor LTA123JUB  
 X 201 (B,25,49) Ceramic Resonator 16.934 MHz CSS1603

**CAPACITORS**

C 104 (B,12,57)  
 C 203 (B,22,47)  
 C 209 (B,28,47)  
 C 210 (B,33,43)  
 C 211 (B,33,41)

CKSQYB475K6R3  
 CKSSYB104K10  
 CKSRYB104K16  
 CKSSYB104K10  
 CKSSYB104K10

E S 901 (A,42,53) Spring Switch(HOME) CSN1080  
 S 903 (B,21,12) Spring Switch(DSCSNS) CSN1081  
 CN101 (A,16,58) Connector CKS4808  
 CN701 (A,25,29) Connector CKS6146

C 212 (B,22,28)  
 C 213 (B,18,26)  
 C 214 (B,17,26)  
 C 215 (B,19,28)  
 C 216 (B,12,33)

CKSSYB104K10  
 CKSSYB332K50  
 CKSSYB473K16  
 CKSSYB104K10  
 CKSSYB182K50

**RESISTORS**

R 101 (B,6,57) RS1/10SR2R4J  
 R 102 (B,8,57) RS1/10SR2R4J  
 R 103 (B,9,57) RS1/10SR2R7J  
 R 108 (B,18,55) RS1/16SS105J  
 R 109 (B,12,50) RS1/16SS222J

C 217 (B,10,34)  
 C 218 (B,10,36)  
 C 219 (B,14,34)  
 C 220 (A,18,38)  
 C 221 (B,14,32)

CCSSCH560J50  
 CCSSCH4R0C50  
 CKSSYB104K10  
 CKSSYB104K10  
 CKSSYB104K10

F R 201 (A,24,11) RS1/16SS0R0J  
 R 202 (A,23,9) RS1/16SS0R0J  
 R 214 (B,18,28) RS1/16SS103J

C 222 (B,13,37)  
 C 223 (B,12,42)  
 C 224 (B,13,45)  
 C 225 (B,13,46)

CKSSYB104K10  
 CCSSCH680J50  
 CCSSCH470J50  
 CKSSYB103K16

1

2

3

4

5		6	
<u>Circuit Symbol and No.</u>		<u>Part No.</u>	
C 228	(B,10,33)	CCSSCH270J50	
C 229	(B,9,40)	CKSSYB104K10	
C 233	(B,32,46)	CKSSYB103K16	
C 236	(B,8,40)	CKSSYB104K10	
C 238	(A,25,44)	CKSRYB104K16	
C 299	(A,26,41)	CKSSYB104K10	
C 302	(B,28,12)	CKSSYB102K50	
C 303	(B,29,12)	CKSSYB102K50	
C 304	(B,27,12)	CKSSYB223K16	
C 305	(B,26,12)	CKSSYB104K10	
C 306	(A,31,7)	CKSSYB104K10	
C 307	(A,41,19)	CKSRYB105K10	
C 308	(A,31,15)	CKSRYB105K10	
C 710	(A,34,42)	CKSSYB102K50	

**D**

**Unit Number : (C,E,F)  
: (D)**

**Unit Name : Keyboard Unit**

**MISCELLANEOUS**

IC 1801	(B,85,23) IC	PD6538A	
IC 1802	(A,159,37) Remote IC	GP1UXC14RK	
D 1851	(A,16,31) LED(C,E,F)	SMLE12BC7T(NP)	
	(A,16,31) LED(Red) (D)	SML-D12V8W(PQ)	
D 1852	(A,53,31) LED(C,E,F)	SMLE12BC7T(NP)	
	(A,53,31) LED(Red) (D)	SML-D12V8W(PQ)	
D 1853	(A,17,21) LED(C,E,F)	SMLE12BC7T(NP)	
	(A,17,21) LED(Red) (D)	SML-D12V8W(PQ)	
D 1854	(A,6,42) LED(C,E,F)	SMLE12BC7T(NP)	
	(A,6,42) LED(Red) (D)	SML-D12V8W(PQ)	
D 1855	(A,63,6) LED(C,E,F)	SMLE12BC7T(NP)	
	(A,63,6) LED(Red) (D)	SML-D12V8W(PQ)	
D 1856	(A,55,21) LED(C,E,F)	SMLE12BC7T(NP)	
	(A,55,21) LED(Red) (D)	SML-D12V8W(PQ)	
D 1857	(A,75,6) LED(C,E,F)	SMLE12BC7T(NP)	
	(A,75,6) LED(Red) (D)	SML-D12V8W(PQ)	
D 1858	(A,88,6) LED(C,E,F)	SMLE12BC7T(NP)	
	(A,88,6) LED(Red) (D)	SML-D12V8W(PQ)	
D 1859	(A,53,11) LED(C,E,F)	SMLE12BC7T(NP)	
	(A,53,11) LED(Red) (D)	SML-D12V8W(PQ)	
D 1860	(A,16,11) LED(C,E,F)	SMLE12BC7T(NP)	
	(A,16,11) LED(Red) (D)	SML-D12V8W(PQ)	
D 1861	(A,7,20) LED(C,E,F)	SMLE12BC7T(NP)	
	(A,7,20) LED(Red) (D)	SML-D12V8W(PQ)	
D 1862	(A,101,6) LED(C,E,F)	SMLE12BC7T(NP)	
	(A,101,6) LED(Red) (D)	SML-D12V8W(PQ)	
D 1863	(A,113,6) LED(C,E,F)	SMLE12BC7T(NP)	
	(A,113,6) LED(Red) (D)	SML-D12V8W(PQ)	
D 1864	(A,139,6) LED(C,E,F)	SMLE12BC7T(NP)	
	(A,139,6) LED(Red) (D)	SML-D12V8W(PQ)	
D 1865	(A,126,6) LED(C,E,F)	SMLE12BC7T(NP)	
	(A,126,6) LED(Red) (D)	SML-D12V8W(PQ)	
D 1866	(A,63,22) White LED	SMLXA4WBETW1(Z1)	
X 1801	(B,84,10) Ceramic Resonator 5.00 MHz	CSS1547	
S 1842	(A,36,21) Encoder(ROTARY COMMANDER)	CSD1168	
CN1821	(B,108,10) Connector	CKS6287	

7		8	
<u>Circuit Symbol and No.</u>		<u>Part No.</u>	
CN1911	(A,155,22) Connector	CKS6267	
JA1921	(A,154,8) Jack	CKN1090	
V 1801	(A,106,23) Segment LCD	CAW2017	

**RESISTORS**

R 1801	(B,90,8)	RS1/10SR222J	
R 1802	(B,88,8)	RS1/10SR222J	
R 1803	(B,147,29)	RS1/10SR101J	
R 1822	(B,54,16)	RS1/10SR273J	
R 1851	(B,20,19) (C,E,F)	RS1/4SA471J	
	(B,20,19) (D)	RS1/4SA681J	
R 1852	(B,19,12) (C,E,F)	RS1/4SA821J	
	(B,19,12) (D)	RS1/4SA102J	
R 1853	(B,49,11) (C,E,F)	RS1/4SA821J	
	(B,49,11) (D)	RS1/4SA102J	
R 1854	(B,59,13) (C,E,F)	RS1/4SA821J	
	(B,59,13) (D)	RS1/4SA102J	
R 1855	(B,42,10) (C,E,F)	RS1/4SA471J	
	(B,42,10) (D)	RS1/4SA561J	
R 1856	(B,14,19) (C,E,F)	RS1/4SA681J	
R 1857	(B,140,17) (C,E,F)	RS1/4SA821J	
	(B,140,17) (D)	RS1/4SA102J	
R 1858	(B,144,19) (C,E,F)	RS1/4SA821J	
	(B,144,19) (D)	RS1/4SA102J	
R 1859	(B,56,17)	RS1/4SA221J	
R 1860	(B,59,17)	RS1/4SA221J	
R 1869	(B,12,19) (D)	RS1/10SR0R0J	
R 1870	(B,11,19) (C,E,F)	RS1/10SR0R0J	

**CAPACITORS**

C 1801	(B,148,33) 10 uF	CCG1192	
C 1802	(B,89,11)	CKSRYB105K10	
C 1803	(B,89,12)	CKSSYB104K10	
C 1804	(B,95,17)	CKSSYB104K10	
C 1805	(B,94,17)	CKSSYB104K10	
C 1911	(B,133,28)	CKSRYB104K16	
C 1912	(B,138,27)	CKSRYB104K16	

**E**

**Unit Number : QWM3365  
Unit Name : BT Unit**

**MISCELLANEOUS**

IC 21	(A,14,48) IC	NJM2846DL3-18	
IC 22	(A,29,47) IC	S-1206B33-U3	
CN21	(A,36,27) Connector	CKS6346	
CN22	(A,42,45) Connector	VKN1189	

**RESISTORS**

R 28	(A,4,32)	RS1/10SR102J	
R 29	(A,5,26)	RS1/10SR102J	
R 30	(A,5,24)	RS1/10SR102J	

**CAPACITORS**

C 21	(A,26,41)	CEVQW221M6R3	
C 22	(A,7,47)	CEVW220M6R3	
C 23	(A,8,39)	CEVW470M6R3	
C 24	(A,9,53)	CKSRYB105K10	

**Circuit Symbol and No.**

**Part No.**

C 26	(A,33,38) 10 uF	CCG1192
C 28	(A,23,49)	CEVW470M6R3
C 29	(A,28,51)	CKSRYB105K10
C 31	(A,35,46)	CKSRYB103K50
C 33	(A,22,54) 10 uF	CCG1192
C 34	(A,42,27)	CKSRYB105K10
C 36	(A,35,49)	CKSRYB104K16

**Miscellaneous Parts List**

Pickup Unit(P10.6)(Service) CXX3556

M 1 Motor Unit(SPINDLE) CXE2273

M 2 Motor Unit(LOADING/CARRIAGE) CXC4026