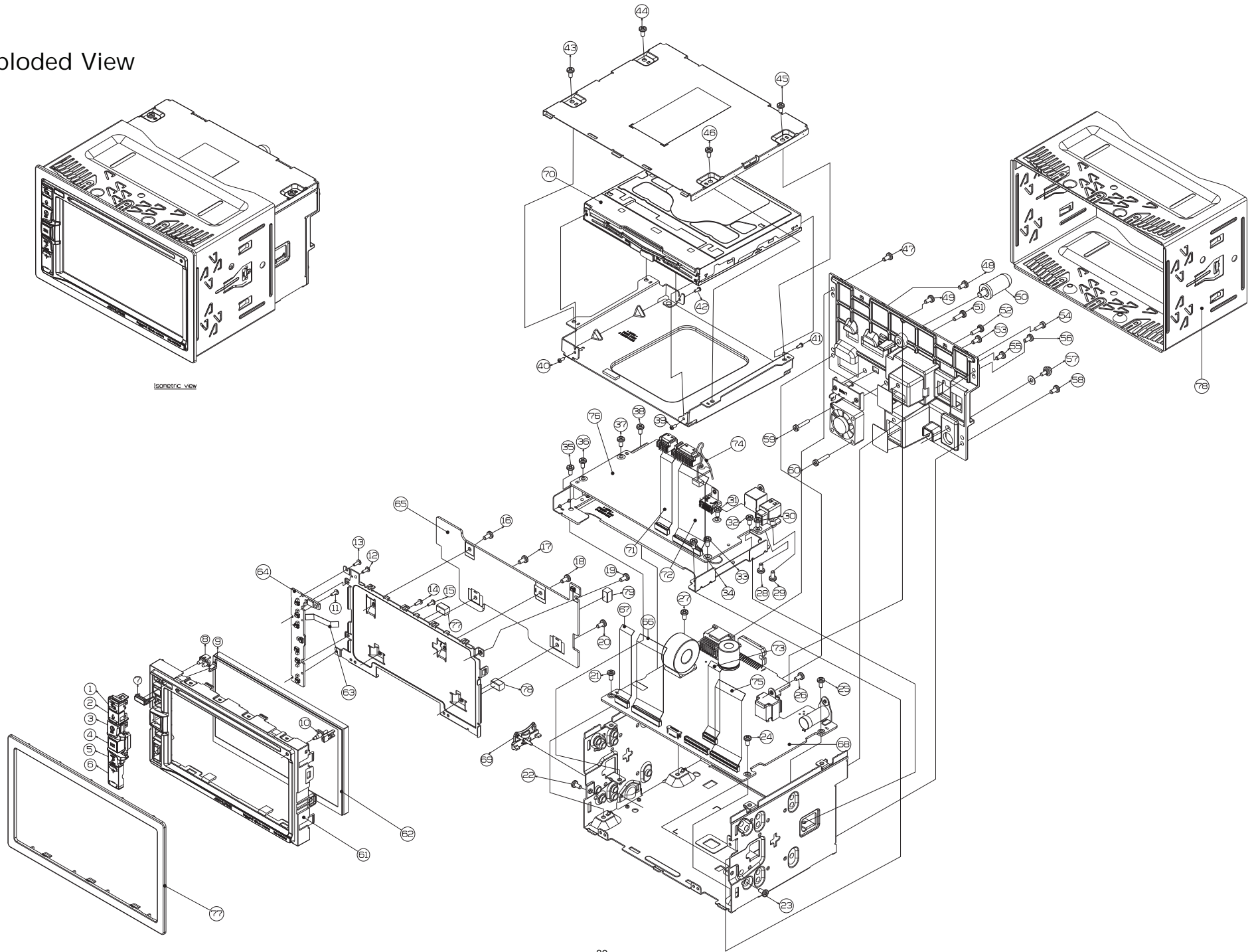


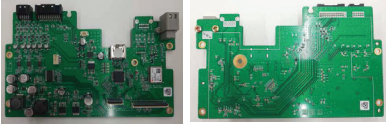





# Exploded View



# Service Parts List

No.	Part No.	Part Name	Exploded number	Part photo
1	00031-01846-5	Front Case(사출)_ALPINE(MS110A)_AVN_EU	61(1~10)	
2	00031-01867-5	Front Case(사출)_ALPINE(MS110A)_AVN_US		
3	00031-01864-5	Front Case(사출)_ALPINE(MS110A)_AVN_AU		
4	00031-01847-5	LCD Module_ALPINE(MS110A)_AVN_Common	62	
5	00031-01852-5	FFC Cable 10PIN(Key-LCD)_ALPINE(MS110A)_AVN_Common	63	
6	00031-01849-5	KEY PCBA_ALPINE(MS110A)_AVN_Common	64	
7	00031-01848-5	LCD PCBA_ALPINE(MS110A)_AVN_Common	65	
8	00031-01853-5	FFC Cable 60PIN(M/Board-LCD)_ALPINE(MS110A)_AVN_Common	66	
9	00031-01854-5	FFC Cable 24PIN(M/Board-LCD)_ALPINE(MS110A)_AVN_Common	67	
10	00031-01844-5	MAIN Board_ALPINE(MS110A)_AVN_EU	68	
11	00031-01865-5	MAIN Board_ALPINE(MS110A)_AVN_US		
12	00031-01863-5	MAIN Board_ALPINE(MS110A)_AVN_AU		
13	00031-01850-5	SD CARD COVER_ALPINE(MS110A)_AVN_Common	69	
14	00031-01851-5	DECK_ALPINE(MS110A)_AVN_Common	70	
15	00031-01855-5	FFC Cable 8PIN(M/Board-DVD)_ALPINE(MS110A)_AVN_Common	71	
16	00031-01856-5	FFC Cable 50PIN(M/Board-DVD)_ALPINE(MS110A)_AVN_Common	72	
17	00031-01857-5	FFC Cable 24PIN(M/Board-SUB Board)_ALPINE(MS110A)_AVN_Common	73	
18	00031-01859-5	Internal GENDER_ALPINE(MS110A)_AVN_Common	74	
19	00031-01858-5	FFC Cable 60PIN((M/Board-SUB Board)_ALPINE(MS110A)_AVN_Common	75	
20	00031-01845-5	SUB Board_ALPINE(MS110A)_AVN_EU/AU	76	
21	00031-01866-5	SUB Board_ALPINE(MS110A)_AVN_US		

22	00031-01860-5	GPS ANTENNA_ALPINE(MS110A)_AVN_Common	-	
23	00031-01861-5	External MIC_ALPINE(MS110A)_AVN_Common	-	
24	00031-01862-5	Interface GENDER_ALPINE(MS110A)_AVN_Common	-	

## Packing Assembly Parts List (AM)

No	Part No.	Description
0	00031-01549-0	AVN_MS110A_APN_AM_CKD_DIO
1	00031-01569-1	AVN_MS110A_APN_AM_CKD
2	04101-00039-4	ASSY_POLYBAG_INSTALLATION_KIT_AM_AU
2-1	04111-00101-2	SCREW_MCFH_M5008L
2-2	04091-00016-2	POLYBAG_INSTALLATION_KIT
2-3	03111-00089-2	KEY_RELEASE
2-4	04111-00102-2	SCREW_MCBH_M5008L
3	04101-00041-4	ASSY_POLYBAG_HARNESS
3-1	04091-00017-2	POLYBAG_HARNESS
3-2	02241-00242-2	CABLE / USB CABLE ASS'Y (1.5m / GRAY)
3-3	02241-00243-2	CABLE / USB CABLE ASS'Y (1.5m / BLACK)
3-4	02411-00015-2	GPS / Alpine GPS ANTENNA R16A639 MITSUMI
3-5	02481-00034-2	MIC / HM6-OB34-W4M-353(T)
3-6	02541-00006-2	HARNESS / AEAIF-W970A-01A (Car-Interface)
3-7	02541-00007-2	HARNESS / AEAIF-W970A-02A (PRE-OUT)
3-8	02541-00009-2	HARNESS / 09-17244Z09 AM Alpine Power
4	04101-00042-4	ASSY_POLYBAG_FACE_PLATE
4-1	04091-00018-2	POLYBAG_FACE_PLATE
4-2	02621-00110-2	FACE_PLATE
5	04101-00043-4	ASSY_POLYBAG_MANUAL_AM
5-1	04091-00019-2	POLYBAG_MANUAL
5-2	04001-00161-2	MANUAL_URL_CARD_MTXM200_APN_AM_AVN
5-3	04001-00167-2	MANUAL_ALPINE_QRG+IM_AM
5-4	04001-00162-2	MANUAL_C/S_USA_AOAM_AOIW_AM
6	03071-00089-2	CASE_INNER
7	04091-00015-2	POLYBAG_HEAD_UNIT
8	04061-00077-2	BOX_PACKING_CARTON_IND_AM
9	02431-00078-2	SD CARD / KP08GMEOKM2BNA1 ALPINE AM 8GB
10	04091-00020-2	STRAP_LIFT
11	04101-00046-2	PACKING_ETC_AIRPACK_TOP
12	04101-00047-2	PACKING_ETC_AIRPACK_BOTTOM
13	04061-00079-2	BOX_PACKING_CARTON_MAS_AM
14	04093-00014-2	PACKING_PAD

# System Connections

